

30 years
1995-2025

SEPTEMBER 2025

Tatsfield Parish Magazine



Fairtrade Fortnight

22nd September- 4th October

Support Fairtrade in the village – see more page 36

£2 One copy FREE to each household

www.tatsfield.org.uk

Titsey Place & Gardens

Oxted, Surrey



Come and spend an exciting day exploring our historic manor house and beautiful gardens

Titsey Place, with its stunning garden, lakes, woodland walks, walled kitchen garden and park offering panoramic views, enchants visitors. Enjoy the fine family portraits, furniture, a beautiful collection of porcelain and a marvellous set of four Canaletto pictures of Venice. After touring the house and strolling through the gardens, visitors can enjoy delicious refreshments in our tea rooms.

Open Season: 14 May to 24 Sept 2025

Opening Days: Wed & Sat - All facilities

Sun - Garden & tea room only

Bank Holidays: Open 26 May & 25 Aug 2025

NGS Days: Open 25 May, 29 June, 27 July,
31 Aug 2025

Opening Times: 1pm to 5pm

House Tours: 1.30, 2.30, 3.30pm

Woodland Walks: Open all year round

Info Line: 07889 052461 www.titsey.org





THE BAKERY

TATSFIELD

OPEN WEDNESDAY - SUNDAY

for breakfast, lunch & evening dining

A MESSAGE FROM THE TEAM

We're so happy to have the doors open again. A huge thank you to everyone who's visited or stayed with us so far.

Come on down for great coffee and drinks, weekend breakfasts, midweek catch-ups and lively evenings.

Pop in, say hello and make yourself at home!

Follow us on socials | @the.bakery.tatsfield
Website will be live soon at thebakerytatsfield.co.uk
Westmore Rd, Tatsfield, Westerham TN16 2AG

Sheree's Store & Tearoom



- Specialty Tea and Coffees
- Delicious cakes
- Cream teas
- Hand made cards
- Locally made arts & crafts
- Wide range of products including locally sourced & Fairtrade
- Newspapers & stationery
- PayPoint

Join us in a friendly, relaxed atmosphere in the heart of the village

Tel 01959 928181

 'Sheree's Store and Tearoom'

2 The Parade
Westmore Green
Tatsfield TN16 2AS





Tatsfield Village Club

phone: 01959 577330

email:

tvsecretary@btconnect.com

Facebook: Tatsfield Village Club

Instagram:

tatsfield_village_club

MONDAYS - BINGO 8PM

**TUESDAYS - REGULAR QUIZ
NIGHTS 8PM**

**FRIDAYS - MEAT RAFFLE
7:45PM**

**SUNDAYS - POKER FOR FUN
7:30PM**

HAPPY HOUR 7-11PM TUES

**TELEVISED SPORTS
FIXTURES**

*Members & their guests
welcome*

UPCOMING EVENTS

Monday 5th May - VE day BBQ

Friday 23rd May - Disco

Saturday 7th June - Country & Western
evening

Friday 27th June - Disco

Friday 18th July - Josh Harvey/karaoke

Saturday 6th September - Games night

...coming soon Tina Turner act, Kids
Halloween party, The Tar Babies and more

Tuition

Lady teacher/tutor with 30 years experience offers
one to one tuition.

Coaching to improve confidence and competence.
Proven results

References available

- 7-11 years Key Stage 2 Numeracy and Literacy
- Entrance Exam Practice
- 11+ Practice
- Support in English and reading up to Year 9



Mob: 0777 351 7063

Limpsfield, Oxted, Tatsfield and Westerham area

Deige's Helping Hands Home Care Provider

Personal Domiciliary Care

Affordable and flexible care delivered to
your own home. We have provided care for
the elderly for over 10 years.

We offer a consistent, professional and
reliable service.

Flexibility - we will work with you to
tailor a care plan that meets your
requirements.

Please contact Deige
07981182773



JAYCY

Painting, Decorating

Free estimates

Nick Walsh

01959 577684

Mobile
07887528264

A25 Taxis

Your reliable Tatsfield taxi
Service for all occasions

Airport transfers

Taxi hire

Occasion/Wedding hire

Corporate hire

School run service (DBS checked)

01959 575957

✉ A25taxis@live.co.uk

The Chartwell Cancer Trust

FUNDRAISE WITH US, CHALLENGE YOURSELF AND CHANGE LIVES TODAY!

Making a difference to cancer care

Whether its running, walking, or jumping out of a plane, fundraising with us is a great way to make special memories whilst leaving a lasting legacy for cancer care. We have a lively calendar of events to suit everyone of all ages and abilities.

Join our amazing community of supporters to transform oncology services and patient care for adults and children battling cancer and leukaemia.

Funds raised are committed to improving facilities, funding clinical research and capital projects, enhancing staff levels, as well as delivering a range of support to young oncology patients and their families in our local communities.

Feeling Inspired?

Get in touch:

T: 01959 570322

E: mcalthorpe@chartwellcancertrust.co.uk

w: chartwellcancertrust.co.uk/events/

Charity Registration Number: 1109784



ACACIA TREE SURGEONS

EST.1944

Based in Tatsfield
01959 577718
07831 132333
acaciatreesurgeons@gmail.com

We provide a wide range of tree services
Complete tree and Stump removal
Thinning and Pruning
Crown Reduction
Lifting and Reducing
Site Clearance
24 Hour Emergency Call Out
Chippings delivered
All fencing undertaken.

**NPTC QUALIFIED &
CHAS REGISTERED**

Call us today for a free estimate
Celebrating 75 years of professional tree care

BIGGIN HILL PLASTERING



**NO JOB TOO
SMALL FREE
ESTIMATES**

**07710622237
or
01959540615**

East
Surrey
Physio



- Community physiotherapy for older people -

Jennifer Willis

BSc (Hons) Physiotherapy MCSP, HCPC

Fallen recently? Suffer with pain?

Balance and mobility not as good as they used to be? Lost confidence when moving around?

Suffer from a Stroke, Dementia, PD, MS, frailty?

Feel weaker or fatigued after an episode of COVID-19

..then East Surrey Physio can help

Jennifer will visit you in your own home, residential home, or nursing home for your physiotherapy sessions.



07939 461 416

jenniferwillisphysio@yahoo.com

www.eastsurreyphysio.com

hcpc

Warlingham - Oxted - Tatsfield - Caterham - Woldingham



Westerham Heights Garden Centre

What We Offer:

- A wide range of plants, shrubs, and trees
- Seasonal flowers to brighten your space
- Expert advice from friendly, local gardeners
- Quality tools, seeds, and soil
- Logs and calor gas
- Fencing

Gift & Homeware Shop

Looking for something unique?
Step inside our homeware shop to discover:

- gifts for every occasion
- Stylish decor and one-of-a-kind treasures
- Locally made and handcrafted items
- Frenchie paint



01959 571545



westerham.heights@yahoo.com



Main Road, Westerham Hill,
TN16 2HW

Your One-Stop Shop for Garden Gifts,
and Good Vibes



TATSFIELD



01959 577347

Garage Ltd



MOT - Servicing - Repairs on all makes of vehicle.

- Tyres • Batteries • Brakes • Suspension
- Air Con • Clutches • Diagnostics • Welding

Please call Simon or just pop in.

Established since 2014

5-7 Paynesfield Road • Tatsfield • TN16 2AT • tatsfieldgarage@gmail.com



Pre School for children 2+

Tatsfield Village Hall

Funding available for 3 & 4 year olds
and some 2 year olds

Monday to Thursday

New
opening
times

8:30am ~ 3:20pm

Friday

8:30am ~ 1:00pm

Morning, afternoon and whole day sessions
available

~Clubs included in some sessions ~
Science Club, Boom Arts Academy, Gardening Club & Messy Club

Phone : 01959 540775

Email: office@littleacornstatsfield.co.uk
www.littleacornstatsfield.co.uk

Charity number: 1024480



VISIT OUR TAPROOM

with incredible views & delicious beer

OPEN THURSDAY – SUNDAY

for brunch, lunch & dinner

WHAT'S ON IN SEPTEMBER?

Quiz Night | Thursday 4th
Classic Car Evening | Thursday 11th
Tap Du Tour | Sunday 14th

Plus live music, creative workshops + more!

Follow us on socials for our full event schedule
www.titseybrewingco.com | [@titseybrewingco](https://twitter.com/titseybrewingco)
Clarks Lane Farm, Tatsfield, TN16 2JU





IQ Wealth Management



INVESTMENTS



PROTECTION



PENSIONS

As a financial advice firm, we provide advice on a wide range of financial matters. From investment advice to retirement planning and managing your estate, we ensure as much as possible goes to the people you want to benefit from your hard work. Our initial 45 minute meeting is free, either at our offices in Tatsfield or your home.

01959 571300

IQ Wealth Management, Aileen McHugo Building, Westmore Green, Tatsfield TN16 2AG

Approver Quilter Financial Limited 15/02/2024

SHUTTERS

HARDWOOD - VINYL - FAUXWOOD
63mm or 76mm or 89mm Louvres
Clear View, Centre or Offset Tiltrods
Numerous colour options



BLINDS



Verticals | Rollers | Venetians | Romans | Curtains | Pleated

FREE Professional design advice on all of our products
Appointments in the comfort of your own home - at times that suit YOU

For SHUTTER Quotes
Please Email:
info@benasa.net

BENASA
The difference is in the detail

To discuss your requirements for BLINDS
Please Call:
01959 509 179



Monkey Puzzle Day Nursery Tatsfield

01959 928 427

Old School, Church Hill, Tatsfield, Surrey TN16 1JX
www.monkeypuzzletatsfield.co.uk

  @monkeypuzzletatsfield



- Highly qualified, well-motivated staff
- Beautifully appointed, bright open rooms
- Large outdoor play area
- Open 7:30am-6:30pm, 51 weeks of the year
- We accept 9 month, 2, 3 and 4 year Government funding

CLASSES AT TATSFIELD

every **FRIDAY**

AWARD-WINNING PERFORMING ARTS SCHOOL



WE'RE THE ONLY SCHOOL IN SOUTH LONDON OFFERING STREET DANCE, BREAK DANCE & FREESTYLE EXAMS WITH THE IMPERIAL SOCIETY OF TEACHERS OF DANCING (ISTD) – WITH A 100% PASS RATE AND 100% HONOURS.

Tots Boom Street dance: 4.15–4.45pm
Tots/LJ Boom Musical Theatre: 4.45–5.15pm
Lower Junior Street dance 5.15–6.00pm
Boom Theatre & Singing 6.00–6.45pm
Junior/ UJ Boom Street dance 6.45–7.30pm



**SATURDAY AND OTHER WEEKDAY CLASSES AVAILABLE AT
SANDERSTEAD, SHIRLEY AND KENLEY**



BOOK NOW: WWW.BOOMARTSACADEMY.COM

Scan me to book a class!



Hazelwood School

www.hazelwoodschool.co.uk
01883 733841

Dare to
IMAGINE



*Dare to break down the conventions of the everyday
and discover something new.*

Discover Hazelwood, an exceptional prep school for children aged 9 months to 13 years, nestled in 25 acres of Surrey woodlands, offering one-of-a-kind learning opportunities, state-of-the-art facilities, and boundless possibilities.

Discover more by booking a tour today.
Admissions@hazelwoodschool.com

   @HazelwoodSchool



LILLEY'S BATHROOMS



Start Your Dream Bathroom Today

At Lilley's bathrooms we pride ourselves in providing our customers with a professional service and high levels of expertise with many years design experience. We use quality products from leading, reputable manufacturers. Showcasing a variety of styles, our showrooms provide an abundance of bathroom inspirations, with realistic working bathroom displays.

A free Design Service | Free Measure Up | Free Local Delivery

The use of 4D software Virtual Worlds, where you can "step in" to your space that has been created before the work begins

The Studio

66-70 Footscray Road, Eltham, London SE9 2SU

0208 8507179

The Gallery

157 Main Road, Biggin Hill, Kent TN16 3JR

01959 572000



lilleysbathrooms.co.uk

Tatsfield Aquatics & Reptiles

Tatsfield Aquatics Ltd

Approach Road

Tatsfield

TN16 2JT

01959 571828

Info@tatsfieldaquaticsandreptiles.co.uk

www.tatsfieldaquatics.com

Retail - Landscaping - Maintenance



RST Glass and Glazing Ltd

14 Rosehill Road, Biggin Hill, Kent TN16 3NF

01959 571200

✉ **info@rstglassandglazing.co.uk**

Windows, door & conservatories

Double glazed units

Misted and broken units

Handles, hinges and locks replaced

Glass table tops cut and polished

Patio door wheels/runners

Trade counter

Burglary damage repairs

All insurance work

Contract Glazing



FENSA

APPROVED
WINDOW & DOOR INSTALLER

6 Westmore Road
Tatsfield
TN16 2AX



Gift Certificates
available
for all therapies

Alex Davies
Muscle Therapist
07967 864235
alxdavies@hotmail.com



Lorraine Maddison
McTimoney Chiropractor
07817 548133
rainymad@icloud.com

Other therapies available including reflexology

www.sourcehealthclinic.co.uk



Call Now on 01959 447525

YOUR LOCAL
**VIDEO
PRODUCTION
COMPANY**

VIDEO

PHOTO

DRONE



**SPECIALISTS IN BUSINESS OVERVIEW VIDEOS, PRODUCT RELEASE,
SERVICES EXPLANATION & VIDEO TESTIMONIALS**

Discover how we can help your ideal, local clients, find you online when they need your service

CONTACT ANDY ON: 01959 447525 | andy@videoevolution.co.uk



Tatsfield Martial Arts

JUDO, JU JITSU & COMBAT FITNESS

Head Coach: Adam Plinston

Judo 6th Dan / Ju Jitsu 4th Dan. UKCC Level 2 Coach

Club coaches are first aid trained, DBS checked and insured via NGBs
Children and adult classes, from age 4+ on Wednesdays, Thursdays,
Fridays & Saturdays

Gain confidence. Learn self-defence. Have fun getting fit!

www.tatsfieldmartialarts.com

07956 956095

tatsfieldmartialarts@gmail.com



Mayfield Riding School



- BHS approved & licensed by Surrey Council
- Adults & children welcome (from age 4)
- Individual and group lessons
- Fully qualified instructors
- BHS training and exams
- Jumping and hacking
- Birthday parties
- Liveries

(01959) 571059

www.mayfieldhorses.co.uk

Private Guitar and Bass Lessons Based in Tatsfield

Experienced tutor with 20+ years experience

Suitable for all ages and abilities

No instrument required, you can use ours!

Learn to play your favourite songs, learn theory or
work towards your grades



**20% OFF YOUR
FIRST LESSON
WHEN YOU
QUOTE 'TPM'**

Playing music relieves stress, boosts brain power and improves confidence!

Email: enquiries@mammothmusicacademy.com

Find us on Facebook & Instagram @MammothMusicAcademy

ARE YOUR LOCKS BEHAVING BADLY?

A Local Trusted Family Business Since 1989


We Value Old Fashioned Customer Service

Christopher
THE LOCKSMITH

 Specialist in UPVC & Wooden Doors

 No Call Out Charge  All Work Fully Guaranteed

 No Fix No Fee

 10% Senior Citizen Discount



For More Advice & Help
Call Christopher:

07772 111 222

www.christopherthelocksmith.co.uk



FITNESS CLASSES FOR EVERYONE



This is a 45 minute class which focuses on improving our balance and core strength. We use various pieces of exercise equipment eg. resistance bands, hand weights and more.



This is a 60 minute class which has been described as the strength & conditioning of ballet, and can be distinguished from other group fitness activities by the use of a ballet barre and its incorporation of movements derived by ballet.

CLASSES:

St Christophers Church Hall
Chelsham, CR6 9EQ

Flex with Fi
Wednesday's: 9.30am
Barre with Fi
Friday's: 8.45am

Tatsfield Village Hall
Westmore Green, Tatsfield, TN16 2AG

Barre with Fi
Tuesday's and Thursday's: 6.15pm



For more information:
check out our website www.wellnesswithfi.co.uk
call me 07801 556 069

Editors • Tara Barry and Tracey Syrett

Chair • Debra Elsdon

Treasurer • Madie Langford (577114) **Distribution Managers** • Jim and Ruth Yeeles (577489)

Advertising Manager • Sarah Tait **Production** • Ruth Yeeles

CHURCH CONTACTS

St Mary's Church Office (Thurs 9.30-13.30)

Admin: Steve Tatler, The Parish Office, High Street, Limsfield RH8 0DG.

Phone 01883 712512 / email stmoffice.ltm@btinternet.com.

Team Rector: Revd Helen Cook email: hjwcook@yahoo.co.uk

Curate: Debra Elsdon email: curate.ltm@gmail.com

Wardens: Marjory Broughton (01959 541059) / Chris Hancock (01959 577622)

St. Mary's Church Hall Bookings • Sheila Cook (577443)

COUNCIL CONTACTS

Parish Council: Clerk • Aileen McHugo Building, Westmore Green, Tatsfield TN16 2AG
clerk@tatsfieldpc.org.uk (07483 337461)

Chair • Kim Jennings email: kimjennings@tatsfieldpc.org.uk, (577328)

Website • www.tatsfieldpc.org.uk

Tandridge District Councillor • Martin Allen, 38 Paynesfield Rd, Tatsfield TN16 2BG (577201)

Surrey County Councillor • Becky Rush becky.rush@surreycc.gov.uk

OTHER CONTACTS

Village Hall Bookings Secretary • Helena Garcia-Mcleod (bookings@tatsfieldvillagehall.org.uk)

W.I. Hall Bookings • Pat Walsh (01959577684)

Parish Room Bookings • (07483 337461) email clerk@tatsfieldparishcouncil.org.uk

Tatsfield Primary School Head • Rachel Jewitt (577356)

Tatsfield Village Club • (577330)

Furze Corner Bookings • 07483 337461 clerk@tatsfieldparishcouncil.org.uk

Doctors • Stock Hill Surgery (580011) • Westerham Surgery (564949) • Oxted Medical Centre (01883 734000)

Village Website: www.tatsfield.org.uk

MAGAZINE CONTRIBUTIONS

We welcome contributions from village organisations and individual residents but reserve all editorial rights. We welcome letters commenting on items in previous issues or on anything else. Anonymous submissions will not be accepted. Organisations must include contact details in their submission, which will be published. Copy date for the Magazine is normally 16th of the preceding month, except for July/Aug and Jan/Feb double issues. Ideally contributions should be sent as a Word attachment in an email to: tatsfieldpm@gmail.com. Alternatively they may be posted to: Tatsfield Parish Magazine, 20 Shipfield Close, Tatsfield TN16 2AU.

Enquiries concerning advertising or loose inserts should be made to Sarah Tait (tatsfieldmag@gmail.com). All loose inserts need to be booked an approved at least ONE MONTH in advance of insertion.

Small Ads These are accepted only from Tatsfield or Titsey residents (No Trade) and are free of charge (Max 10 words plus phone number.) We will include them in the next issue space permitting.

Calendar Dates Our calendar usually covers six weeks or more from publication so please give us your dates in good time. If you don't want your event to clash with others why not check with us early?

Advertisements We take no responsibility for the goods and services advertised in the magazine.

Cover image: Courtesy of Jim Yeeles.

EDITORIAL

We had a call – three young pilgrims were heading for St Mary's on one of the hottest days of the year; could we help?

Izzy, Tori and Sarah arrived looking rather dishevelled and we offered showers and ice lollies and then settled them in our Millenium Hall for a night's sleep in the churchyard.

Returning the next morning with breakfast baps I found them refreshed and admiring our beautiful view – rather misty but still impressive – and then they spent some time in the church sketching and asking questions about our long, long history. And then they were off – tracing the route of Chaucer's pilgrims to Canterbury.

At that time our church would have been just over 300 years old but I suspect the view hasn't changed much in that time – although the sound of the M25 is a constant audio presence nowadays!



It was lovely to be able to contribute to their adventure; our guests gave us so much back; exchanging stories and goodwill. As I said a blessing to send them on their way I felt that we had also received the nourishing goodness of their brief presence with us.

God bless the path on which you go.
God bless the earth beneath your feet.
God bless your destination.
God be a smooth way before you,
A guiding star above you,
A keen eye behind you
This day, this night, and forever.

Celtic Blessings: Prayers for Everyday Life – February 1, 1999 by Ray Simpson (Compiler)

Reverend Debra

TATSFIELD ONLINE

Village website: www.tatsfield.org.uk

Village facebook page: search for 'Tatsfield Village' on facebook

Tatsfield Talk facebook group: search for 'Tatsfield Talk' on facebook,
and ask to join to be able to view and post. **Twitter:** @tatsfieldtweet

PARISH MAGAZINE EVENTS LISTINGS

If you would like your event included in this diary in future, please send details to tatsfieldpm@gmail.com. Please also let us know if any information has changed.

TATSFIELD PARISH COUNCIL

We have been surrounded by beautiful flower displays in the village centre, Village Hall and school, planted and maintained by the wonderful In Bloom group. Our thanks to Jill and all the team on all the hard work to give our village such super displays.

We are pleased to update you on our project plans to regenerate Furze Corner pavilion and sports field. We have planning permission from Tandridge District Council and the Steering Group are progressing funding applications. Please read our update below and lend your support to our funding application.

Although the Parish Council do not meet in August, we are still busy. We have dates for your diaries:

- Sunday 21st September, Autumn Litter Pick. Meet at the Picnic Area, 10.30am.
- 31st October, Something Spooky will be happening at the Picnic Area. After last year's amazing support for our Halloween event, we will be repeating again for our under 11 year olds. We need helpers so if you can spare a couple of hours, let me know.

Looking further ahead, in a change from carol singing, Father Christmas will be making a visit to Tatsfield in his four-wheeled sleigh. He will be riding around village with his Elves, stopping at his Grotto at the Picnic Area to deliver small gifts to under 11s. Again, helpers would be welcome!

Our Village Children's Nature Area has been growing and has looked lovely this summer with wildflowers. Many thanks to Sean and Alizon Mooney for their very much appreciated weeding and maintenance.

I'm sure many of you have noticed the new additions to the pond area. Our Bronze seated girl (Lucy the Bronze) is quietly enjoying her book in the centre of Tatsfield, whilst two other children are enjoying a game of leapfrog. Both Bronze statues have been given to Tatsfield Village by a local charity. Many thanks to the Roseheath Foundation.

Looking forward to seeing you all soon.

Kim Jennings Chairman Tatsfield Parish Council

kimjennings@tatsfieldpc.org.uk



FURZE CORNER – WE NEED YOUR SUPPORT!



Furze Corner is the only publicly accessible provision of sports playing fields across the whole of Tatsfield. Until 2016, it was in regular sports use by two senior football teams, a junior football team, a senior cricket team and a junior cricket academy. It was also used for activities by 1st Tatsfield Scouts, children from the local nursery and as an amenity for local people for outdoor events and for walkers. Over recent years, the pitches have struggled with poor drainage and, due to the significant degradation of the old pavilion and changing facilities, only the cricket team are using the field.

Tatsfield Parish Council have now secured planning permission to build a new sustainable and fully accessible sports pavilion and to improve and reactivate the sports fields. We are fully committed to bringing Tatsfield Rovers and football back to the village for senior and junior teams and extending the participation in cricket. The project will encourage young people to participate within teams with modern purpose-built facilities.

The replacement of the pavilion and the improvement of the pitch slope and drainage is essential to get this sports, health and wellbeing asset back in full use by the village. A new pavilion will also provide a valuable resource to other local clubs and societies. This is a project valued at £1.9 million and we have applied for £900,000 from Your Fund Surrey for this essential community project.

To help us secure funding, we need everyone to show their support at the website below – it just takes a few minutes. Alternatively scan this QR code to go straight to the page:

<https://yourfundsurreyproposals.commonplace.is/>



Scan to access survey

The deadline for comments is 15th September 2025.

TANDRIDGE DISTRICT COUNCIL

August is generally a very quiet time for any District Council with the main emphasis on the school holidays and getting away on holiday, so it is a quiet report this month to go with it. In July I had committee meetings on Community Services, Strategy and Resources, Audit & Scrutiny and the Full Council. Around this time, I was available to sit on a Licensing Panel to discuss a summary review under the Licensing Act for an establishment that the police felt was not meeting the objective of the license. This one will rumble on for the rest of the month.

Local Government Reorganisation You must all now be hearing about the Local Government Reorganisation, where both Surrey Council and the eleven District and Borough Councils will be subsumed into a new unitary authority. Surrey County Council are still pressing ahead with their choice of two unitaries. The Government have yet to decide on this for Surrey, so do please ensure you have your say on this matter.

A sad consequence of this uncertainty is that the council is losing at least three good people to other organisations. You can't blame them as they have families to support and future jobs to think about, so it will be interesting to see how the reorganisation will affect current councils going forward. The Government announces their decision on 14th October. In the meantime, you can follow the progress with this link:

<https://www.gov.uk/government/publications/local-government-reorganisation-summary-of-feedback-on-interim-plans/local-government-reorganisation-summary-of-feedback-on-interim-plans>

Fly tipping and waste disposal During July the Independent Group continued meeting with officers and the information given to us concerning fly tipping and waste disposal is interesting enough to pass on here, as a warning to those of you considering making changes to your house or gardens:

Across local authorities in Surrey, Tandridge is ranked 7th for the number of fly tipping incidents (reported). The max being 1,400 and the minimum 423, we stand at 959, although since 2015 there has been a slight decrease in the incidents of fly tipping. The most prevalent type is the tipping of household waste, mainly coming from household renovations, then from construction and demolition, so please be careful not to fall foul of this when disposing of your waste. Within the range of enforcement actions includes warning letters all the way through to being taken to court. So, ensure that you:

1. Check that the person/company is a registered waste carrier.
2. Ensure that you receive back your copy of the waste transfer note which would provide correct disposal details.
3. If they are genuine waste carriers negotiate payment being made upon the correct disposal confirmation. ***You are responsible to ensure that your waste is correctly disposed of so do not fall foul of this law and think careful before employing a waste carrier. Fines start at 50% of relevant weekly income right up to 600% of weekly income!***

Grey Belt Land As a consequence of the change to the NPPF, decisions made before the “Grey Belt” came into existence are now being challenged by appeal to the Planning Inspectorate; the result of which caused one refused application for 270 houses down in Smallfield to be allowed by the inspector. I can understand why but nevertheless a worrying turn of events.

Remember you can sign up for the Tandridge District Council news and events e-newsletter at www.tandridge.gov.uk/signup as this will include all manner of things happening down at the Council and wider afield.

Remember to help Tatsfield Good causes by buying your Tandridge Together lottery tickets. Thank You. But please consider going further than that and think about volunteering to assist the clubs and societies that need members to help run them.

Remember to support all of our local businesses who will continue to need us to show our support to them to ensure that they continue to operate well into the future.

I would ask that you consider the things that make this village what it is and why you choose to live here. There are many societies and clubs that operate across the range most of whom could use a little more volunteer help from you. Please consider helping.

Cllr Martin Allen Tel: 01959 577201 or 07484185363

Email: cllr.martin.allen@tandridge.gov.uk or martin_allen@talk21.com

SURREY COUNTY COUNCIL

Budding entrepreneurs and early-stage businesses across Surrey are set to receive a major boost with the launch of the **Start-Up Surrey Programme**, a dynamic new initiative funded by Surrey County Council and delivered by leading business support provider The IncuHive Group. This pilot programme will offer free, tailored guidance and practical support to residents who are preparing to launch their own ventures, as well as businesses in their first year of operation. It will guide founders step by step, with expert-led workshops, one-to-one mentoring, practical advice, and support from others on the same journey. The programme is expected to engage a diverse range of businesses across Surrey and will cover key areas such as funding, marketing, finance, digital presence, and scaling strategies. 120 businesses are set to receive support in the next six months. It is the latest initiative from the Council under its Business Surrey offer (businesssurrey.co.uk), which provides free accessible support to help businesses of all sizes to start, grow and thrive.

Matt Furniss, the Council’s Cabinet Member for Highways, Transport and Economic Growth, welcomed the launch, adding:

The Start-Up Surrey Programme is now open for registrations to all start-ups and businesses in their first year of trading across Surrey. Participation in the Programme is

free for businesses, as it is fully funded by Council via UK government Growth Hub funding.

For more information or to register for the programme, visit: <https://incuhive.co.uk/acceleration-investment/business-surrey>.

Or you can contact the Business Surrey team via the website: <https://www.businesssurrey.co.uk/advice-and-support/business-support-form/>

SURREY POLICE – YOUR SAFER NEIGHBOURHOOD TEAM

Neighbourhood policing within Surrey Police is delivered by Safer Neighbourhood Teams in each of the 11 districts and boroughs of the County. Each neighbourhood within the districts and boroughs is served by a dedicated team of officers and staff. Neighbourhood Teams provide community engagement, targeted foot patrols and collaborative problem solving to tackle the issues that cause the greatest harm in our communities. Teams are made of sergeants, police officers and PCSOs, led by the Borough Commander, with further support provided by other team members - with specialisms in youth engagement, licensing and crime prevention.

Police Constables work in the community to tackle local issues and crimes. They provide a visible, accessible and approachable uniformed presence in the community, and are responsive to local needs. PCSOs provide a visible, accessible and approachable uniformed presence in the community, using designated powers where needed, deterring and preventing crime, and tackling antisocial behaviour. They are all problem solvers and all work with partners, where needed, to address local issues.

Only one crime was reported in Tatsfield during May 2025, and that was one public order offence.

If you want to know more about Policing within Surrey and particularly Tatsfield then please come along and meet the Local Officers who take on this role for us.

In a Meet the Beat Session, subject to operational demands officers will be in Tatsfield outside Sheree's Stores on Monday 29th September 2025 3:00pm - 4:00pm.

The District Councillor and Parish Councillors will be there. We look forward to meeting you. <https://www.surrey.police.uk/>



CLAIRE COUTINHO MP

Three years ago, I started The Friendship Project, a charity which aims to tackle loneliness through the creation of friendships in East Surrey. It was terrific to welcome so many community volunteers to our annual summer party last month. It perfectly aligned with August's glorious weather, so it was Pimm's and light bites all round! These volunteers are the cornerstone of the community, and it was

fantastic to help connect groups who are looking to collaborate in the future. A special thank you, as ever, to the incredible Peter Chan MBE and his team at Herons Bonsai for hosting us in his wonderful community events space. If you'd like to learn a bit more about The Friendship Project or how we might be able to help your local community group, please do get in touch at claire.coutinho.mp@parliament.uk.

I have met with the team from East Surrey Dial-a-ride. They're in a tough situation at the moment with funding. I know how much of an impact this service has in the community – one of the drivers told me a story about how he had saved an older lady's life a few years ago. I've taken their concerns up with Surrey County Council to see if more funding can be allocated. Fingers crossed.

Let me introduce a community legend you may not have heard of yet: David Sullivan, the founder of CodeBlueCPR. After losing four close friends to sudden cardiac arrest, David made it his mission to save lives. CodeBlue has installed seven life-saving defibrillators across Oxted, and they're rolling out CPR training to schoolchildren in London, with plans in the works to reach children in Surrey too. David's also set four World Records in the process, one for the highest altitude CPR training. The defibrillator he left behind saved a young French woman's life just two weeks later. David is fulfilling his mission – and it inspires me that East Surrey is home to people like him. It was a pleasure to meet him recently and I hope to welcome him to Westminster soon.

Finally, I wanted to remind you that I host regular surgeries to take up your concerns and solve problems on your behalf. If you have an issue you'd like me to help with, please contact me on claire.coutinho.mp@parliament.uk or call 0207 219 5972

DO YOU HAVE A FAVOURITE RECIPE? SHARE IT WITH THE VILLAGE!

It's been several years since the village collated a recipe book, and some of our old copies are looking rather dog-eared! So, we thought it might be time to update our old staples, add some exciting new tastes to our repertoires, and of course keep some old favourites in there.

We can't do it without YOUR help. If you have a favourite recipe, please submit it to us via the form below. We have a special section for children's recipes too, so get the younger Tatsfielders to submit their favourites.

The book will be ready and published in time for Christmas, so will make a great local stocking filler.

Submit your recipe here: <https://forms.gle/eySL55hAxmAHFrt16>

Or scan the QR code

Deadline for recipe submissions is 30th September 2025.



Scan to submit a recipe



Little Acorns Pre School

During the last half of our summer term, we were kept very busy with lots of exciting activities both indoors and outdoors with lots of water play too!



Little Acorns were visited by Tatsfield Aquatics in July. The children were able to get up close to some fascinating exotic animals and laughed with excitement as they gently held a variety of reptiles!

Tatsfield 
Aquatics
& Reptiles



We held our Leavers Celebration show at the end of term, saying goodbye to our older children beginning their next adventure!

They will certainly be missed, but we wish them all the best for successful new beginnings in their reception classes.



For enquiries regarding spaces for new starters in September, please contact office@littleacornstatsfield.co.uk

MONKEY PUZZLE DAY NURSERY



At Monkey Puzzle Tatsfield we have had a fun filled month! Forest School is in full swing; we have had holiday sessions running for 5-8 year olds, as well as preschool starting their sessions. They have been taking part in magic potion making, Hapa Zome Japanese art, mindfulness, building fairy homes and dragon nests, clay art, fire lighting and making s'mores.



The children loved taking part in a big car wash when the weather was lovely and warm. They all washed our amazing staff cars for them – a BIG thank you to our preschoolers.



We also sadly say goodbye to our preschoolers as they start their new adventures at school! We will miss you!

Are you looking for childcare?

We offer a high standard of care to children aged 3 months to 5 years old. Providing a range of fun and exciting activities, both indoors and outdoors all year around, exploring our local environment and all it offers on local trips, celebrating all traditions and cultures. **We have spaces available here at Monkey Puzzle Tatsfield**, if you are interested and want to book a tour of the nursery, please contact us

Phone: 01959 928427 Email: manager@monkeypuzzletatsfield.co.uk

TATSFIELD HORTICULTURAL SOCIETY AUTUMN SHOW 2025
SATURDAY 6 SEPTEMBER
3.00-4:45PM
TATSFIELD VILLAGE HALL



**Vegetables- Flowers - Pot Plants - Fruit – Flower Arrangement -
Photography - Art - Crafts - Domestic – Produce and a Junior Section**

Free to exhibit and you can enter multiple classes

Non-residents welcome to exhibit. Just £1 and 50p entry on the door

Please visit our website for Rules, Guidance and Entry forms

<http://tatsfieldhorticulturalsociety.weebly.com>

NOT SO YOUNG CLUB

The sun shone for our annual seaside trip this year to Brighton. We set off in a brand-new minibus provided by Practical Car and Van Hire. Neil and Graham, our two drivers guided us through the countryside before reaching our lovely destination, The Old Ship Hotel near the Pier in Brighton. We were welcomed by staff and shown our own private dining area for the day overlooking the sea.

After our tea and biscuits, we were served Fish and Chips, which were delicious. Once our tummies were filled with this delightful treat we were free to come and go whilst unlimited tea and coffee waited for us at the hotel. Members took time to wander along the seafront and visit the pier. Tina even ventured into the sea!!



Our day was completed by the traditional ice cream enjoyed en-route back to Tatsfield.

We are all extremely grateful to the Parish Council and Practical Car and Van Hire for supporting us in this event. Thank you.

August saw our Summer Barbecue. As always, the sun shone but thanks to Keith who saved the day by providing us with an enormous marquee to protect members from the sun. Everyone tucked into burgers and sausages accompanied with all the normal treats. Claire conducted a music quiz, and everyone had a wonderful afternoon.

On 10th August some members enjoyed afternoon tea at the Millennium Hall. What a better place to sit and look across the countryside whilst enjoying cake and tea? The ladies do a wonderful job thank you.

On Saturday 16th we took the ice cream van to Westmore Green (with the permission of the Parish Council). After days of glorious sunshine, the weather decided not to be so kind to us but that did not deter our members and villagers joining us. It was so lovely chatting to everyone, and we hope you all enjoyed tea, cake or for the brave, ice cream! The winner of the jar of sweets was Martha - she guessed 145 sweets. We are hoping that two new members will join us at our September meeting. We raised just over £160 and would like to thank the Fairtrade group and Kim Jennings for the loan of the flasks and for the wonderful villagers who came to support us.

Our next meeting is on 9th September at 12:30 in the WI hall, new members always welcome.

Take care and keep safe.

Sue Dowse, notsoyoung100@gmail.com, 07816110929

TATSFIELD WI

CELEBRATING TATSFIELD WI's 100th BIRTHDAY



Every WI worth its salt should have a Summer Garden Party, and we had ours during the sweltering July heatwave. Luckily the Cartwrights' garden had a beautifully shady area where our members feasted on a mouthwatering spread and enjoyed glasses of Pimm's or fruit mocktails.

Our speaker in August, local history buff Ian Mitchell, told us about the History of Tatsfield; from the Domesday Book to present day. Inhabitant numbers remained small and steady throughout the centuries as a rural farming-based community, increasing in the 20th century as the number of local tradesmen and shops grew. We heard snippets from local newspapers over the years and were introduced to local 'celebrities' and village characters. Our elevated position on the North Downs gave Tatsfield both a reputation for healthy fresh air and extreme winter weather.

Our September meeting will be a hands-on Felting Workshop with Tatsfield crafter, Jane O'Keefe. Our WI members will each create their own framed wool felted masterpiece to take home.



Don't forget, everyone is invited to come along for a cup of coffee or tea and a friendly chat every Wednesday morning between **10.30 and 12** in the WI Hall in Paynesfield Road. Apart from a short break over Christmas week, our Pop In runs every Wednesday and has done so for many years, hosted by a small rota of WI volunteers. A great way to meet other village residents – anyone of any age is welcome. So, if you are passing, please do just "Pop In".

I would also like to remind you that our WI Hall is a conveniently local, cosy and bright venue available to hire at very reasonable rates for a meeting, family party or celebration, please just give us a call on 01959 577684 to find out more.

Susan Smale 01959 577660

TATSFIELD HORTICULTURAL SOCIETY

MEMBERSHIP RENEWAL AND FUTURE EVENTS



It has been a busy few months, with the committee and volunteers knocking on doors, delivering leaflets or emailing members directly to seek your membership renewal. We had a good and increasing response from payments online and that is very helpful and saves trudging the streets, and we hope to continue and improve on that next year as well. So, if you have either missed the knock on the door or mislaid the information slip or promised to pay and have forgotten, the payment of your membership or just a donation can still be made online, the details are:

Cooperative Bank Business Account for Tatsfield Horticultural Society

Sort Code 08 92 99 Account No. 655 166 10

Please use your name/address as the reference on the payment so that I can identify your payment. Alternatively, please email me to confirm that you have made the payment. Once payment is made, I can arrange for your Yearbook to be delivered. We do hope you will want to remain as a member or become a new member.

The annual cost of membership remains at just £5 per household or a donation from senior citizens. Membership entitles you to attend a range of events and to use the composting site. This year we have the bonuses of a **discount scheme at Knights Garden Centres**, and a **discount RHS Entry card**. We are still booked to go there in October.

After the summer our future events start on **6th September with the Autumn Show**, all details on this and the future events can be found in the Yearbook or ask a member of the committee. Further details about this event can be found elsewhere in the magazine. The **Garden Club will be held on 14th October** and the **Wisley visit on Saturday 18th October**.

The **AGM will be held on Wednesday 25th November** and this will be followed by a special **Christmas Workshop on Saturday 6th December** where you can learn to make a Christmas Wreath or table centre. Look out for more details of this over the coming months. But put the date in your diary now.

We look forward to your continued support by attending one of these events. In the meantime, continue to enjoy what is turning out to be a good summer.

Martin Allen, Membership Secretary and Treasurer

Tel: 01959 577201. Email: martin_allen@talk21.com

TATSFIELD IN BLOOM



The summer plants have all loved the sunny days we have had during July and August and the volunteers on the watering rota have been busy nearly every day keeping the displays in good condition. I hope you will agree that they are magnificent! We are especially pleased as most of them were purchased as plug plants and brought along in the polytunnel before planting out. The different types of begonias have been particularly successful.

We have now moved on to thinking about our Spring planting and have ordered online and received violas, bellis daisies and different bulbs for planting in October, or later, depending on how long the summer flowers last. These are now being nurtured in the polytunnel and we are excited and hope that these are as good as the summer flowers.



A big thank you to all those of you on the watering rota. It will continue until the middle of September and beyond if required.

If you would like to make a donation towards the displays in the village, please use the yellow pots in Sheree's shop, The Old Ship or The Village Club. Alternatively, please donate direct to TIB:

Tatsfield in Bloom A/c No: 65383694
Sort Code: 08-92-99

Or send them to me at 12 Shipfield Close, Tatsfield, TN16 2AU

Many thanks for your continued support.

Jill Hancock

577622 jillhancock12@gmail.com

TATSFIELD MARTIAL ARTS

VENRAY INTERNATIONAL JUDO TOURNAMENT – HOLLAND

On Friday 20th June, Kayden Plinston travelled to the Venray International in Holland with the England judo squad. The Venray International is a huge competition and this year (it's 50th year) there were 58 countries represented and not just from across Europe. We worked out that the Costa Rican judo players travelled the furthest!

No medal for Kayden this time, however he did himself and the club proud in a massive group of 60 fighters in the u73kg weight group. Losing his first contest to a judoka from Belgium, he then fought his way to the repechage final for his pool beating a French judoka with ippon (top score) and then a black belt from the Netherlands also with ippon. One of these wins was against someone who had experience of competing at European Cups (a series of tournaments featuring some of the highest-level judoka from across Europe). In the repechage final, Kayden was beaten by a waza ari (half ippon score) in golden score time.

Out of the u73kg competitors that travelled with the England squad, Kayden progressed the furthest. Considering this was his first time competing in this weight group and that he had been unable to train for the last four weeks whilst healing from stitches, lots of positives to take away from the weekend.

THE KENT INTERNATIONAL – SUNDAY 29th JUNE

The Kent International is one of the oldest competitions in the UK and regularly pulls in competitors from across Europe, and this year there was even a 2024 Olympian taking part (yes, she won).

In the juniors (u19s) we had Kayden Plinston and Harvey Davy fighting in the u73kg group. In 2024 both boys won bronze medals, however Kayden was now in a heavier weight group and Harvey was now fighting in the u19s not the u16s like last year.

Both lost their first fights and ended up in the repechage pool fighting for the chance of a bronze medal. Unfortunately, they ended up facing each other in their next fight which meant only one of them would progress further. After a close battle Kayden won with ippon, meaning Harvey was out. Kayden then won his next fight which meant he would get the chance to fight for the bronze medal. In the bronze medal contest, Kayden was in complete control throwing his opponent numerous times before catching him with ippon for the win and the medal.

Ben Davy competed in the u81kg masters (over 30s) category. After losing his first contest, a gruelling match which had both players with waza ari each until the last four seconds, Ben fought his way through the repechage with some big ippons and secured a well-deserved bronze medal, plus ten more points towards his 2nd Dan.

All three then decided to enter the senior (adults) event in the afternoon. Harvey had a tough first match, against a much older/stronger opponent and was eventually out



gunned. In his next fight he was against a 20 year-old black belt who he had lost to in April. This time, Harvey made it much harder work for his opponent and went a waza ari up but got caught for an ippon after this. At 16 years old, fighting in the seniors is a real step up and Harvey will have gained a lot from today. Kayden had a bye in round one. In round two, he won against another black belt with ippon from a beautiful hip throw, which meant he was into the semi-final against a 23

year-old 2nd Dan black belt (Kayden is 17). The contest went the full distance, with Kayden narrowly losing on a yuko - the smallest score possible. This meant Kayden would be fighting for the bronze medal against the black belt that Harvey had faced earlier. After a cagey start, Kayden threw him for ippon with a shoulder throw – winning a 2nd bronze medal, plus 20 points towards his 2nd Dan. Ben was giving away quite a bit in age, fought bravely but despite winning some matches was unable to medal again.

Finally, a special mention to Edie Plinston who worked all day in the boiling heat as a table official/scorer/timekeeper. Often forgotten about when her brother is competing, she is always there, supporting from the sidelines. Like all sports, judo relies on a team of volunteers (coaches, referees, table officials etc) without whom these events just wouldn't be possible.

Adam Plinston

INVITATION TO TAKE A FREE ALLOTMENT PLOT UNTIL JANUARY 2026

Have you considered how much fun it would be to
grow your own fruit and vegetables?

Take the plunge, no rent pay until next year.

Call Alan Armitage on 07899725944 to visit the site.

NORTH DOWNS SINFONIA

By the time you read this, tickets will be on sale for the NDS concert on Saturday 15th November, at 7.30pm as usual in the Village Hall. This promises to be a fabulous concert, with Mariatu Kanneh-Mason playing the Elgar Cello Concerto. Last November, she played the Saint-Saens Cello Concerto in front of a packed and extremely appreciative audience. **Tickets for that concert sold out completely within a matter of weeks, so if you would like to come, don't delay in booking your ticket. Just email northdownssinfonia@gmail.com, or telephone 01959 577659 and we will reserve tickets, which can be picked up and paid for on the night. Tickets are £13, or £11 for concessions, and include a programme.**

Also being played are Donizetti's Roberto Devereux overture and the first symphony ever composed by an English lady, Alice Mary Smith.

The 'tragic opera' Roberto Devereux was one of a series that Donizetti wrote (this one in 1837) concerning the Tudor period in English history. Robert Devereux was 2nd Earl of Essex, and an influential member of the court of Elizabeth 1st. Because of this, there is a very well-known tune in the overture, which you might find surprising in an Italian opera.

The first of Alice Mary Smith's (1839 – 1884) two symphonies, in C minor, was published in 1863. Born to a family in comfortable circumstances, she was a prolific composer despite her relatively short life – she died of typhoid fever. The symphony is a work that deserves to be better known, being very melodic and harmonious in the classical tradition.

The concert will be conducted by Jonathan Maynard, who has conducted many concerts for us in the past, including the one featuring Mariatu last November. **Peter Maynard**

TATSFIELD - ANNUAL ROYAL BRITISH LEGION APPEAL

I have been organising the annual appeal since 2018 and have decided that 2025 will be my last before handing over to another willing volunteer or back to the Royal British Legion.

Over these last eight years as a village, we have raised more than £10,000 in support of our veterans and their families, so a huge thank you for all your contributions.

Each year in mid-October I distribute poppy boxes to various village businesses and organisations and collect them in after Remembrance Sunday, banking the money raised. You may also have seen our 'pop up' poppy shop held outside of Sheree's on two consecutive Saturdays prior to Remembrance.

If there is anyone who would be interested in taking this worthwhile cause forward, then please get in touch and I would be happy to talk you through the process and even assist you in your first year.

David Vale Tel: 01959 577864

Fairtrade Fortnight

2025



Tea is the world's most popular drink, in Britain alone we drink over 100 million cups of tea every day. The comfort of a cup of tea connects people of all backgrounds across the UK. From the ritual of an afternoon tea to the simplicity of a builder's brew, the great British cuppa is a longstanding part of our national identity.

The tea we drink also has the potential to contribute to rural development, water access, improve education outcomes, empower women and – ultimately – change lives.

Tatsfield Fairtrade Group

Sunday 28 September

at St Mary's Church Teas

from 3pm to 5pm

Try a range of Fairtrade Teas

Fairtrade Coffee and Cakes

Shop from a range of Fairtrade Products



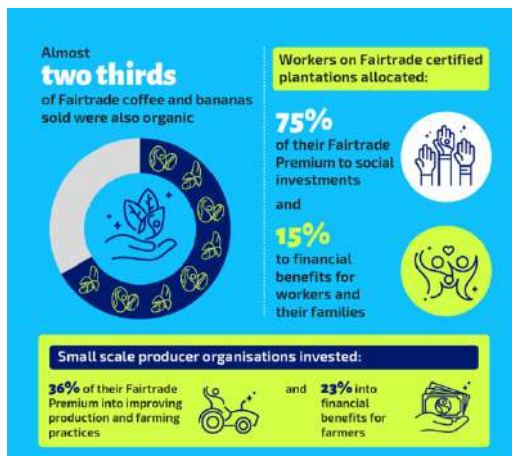
FAIRTRADE FORTNIGHT 2025

We will be marking Fairtrade Fortnight 2025 (September 22nd to October 5th) in Tatsfield in a number of ways:

1. **Church Teas Sunday 28th September 3pm to 5pm** – come and try a variety of FT teas and browse a range of FT goods for sale. Our cakes will all be made with Fairtrade ingredients including sugar, chocolate, coffee and bananas.
2. **Tatsfield Primary School Activities** – including a sharing assembly.
3. **Sheree's Stores** – a wider range of Fairtrade goods for sale.

Why is Fairtrade Fortnight important?

Fairtrade Fortnight highlights the challenges faced by farmers and workers, particularly in the context of the current cost of living crisis and climate change. Rising costs for fuel, fertilizer, and food mean that producers may struggle to cover their expenses and invest in climate adaptation measures. By choosing Fairtrade, you can directly support farmers and workers in receiving fair prices for their products and building a more sustainable future.



Fairtrade is not a charity, and every purchase ensures that the standard of living AND quality of life of a family across the world is improved.

See if you can try a new Fairtrade product during this Fairtrade Fortnight. You might be surprised that the price is not necessarily more expensive.

Many well-known high street shops stock and serve Fairtrade.

We look forward to meeting you at the Church Teas on September 28th!

Website: tatsfieldfairtradevillage.weebly.com

Facebook: facebook.com/tatsfieldfairtrade

Email: tatsfieldfairtradegroup@gmail.com



ST MARY'S MATTERS

We are a friendly Anglican church within the Diocese of Southwark, with a long, proud Pilgrim history and continue to welcome those travelling the Pilgrim's Way today.

All are welcome to our services or to simply enjoy the peace and tranquillity of our pretty ancient church and the picturesque views over the downs from our churchyard. You can find out more about St Mary's on our website at www.lttm.org.uk/stmarys where there is also a link to our weekly Notice Sheet.

10am Sunday Services at St Mary's for September 2025 – all are welcome!

7 th September	Holy Communion with hymns led by Revd Debra Elsdon
14 th September	Holy Communion with hymns led by Bishop Chris Goldsmith
21 st September	All Age Service with music led by Revd Helen Cook, in a relaxed family-friendly setting with a short interactive talk.
28 th September	Holy Communion with hymns led by Revd Debra Elsdon.

Holy Communion for the sick and house-bound Those unwell and/or house-bound who wish to receive Holy Communion at home or place of residence can contact our Churchwardens. Details below.

Personal Prayer Requests If you wish to have prayers said on your behalf, while the church is closed email your request to stmoffice.lttm@btinternet.com.

St Mary's opening times Our pretty church is open for viewing, prayer or personal reflection from 9am - 4.30pm approx., on Tuesdays, Wednesdays, Thursdays, Saturdays and Sundays.



St Mary's Teas 2025 Our popular Summer Teas are held 3pm to 5pm on Sundays in the Millennium Hall until the end of September. Visitors old and new are all very welcome to enjoy a beverage and delicious cake. Please join us before the season ends.

Churchyard Team Maintenance sessions took place in July and August with strimming, pruning of shrubs and general tidying up completed. More compost was bagged and is available for collection from the compost area. For the fourth year running we were delighted to welcome a team of volunteers from Pfizer in July, with many returning from previous years. The team worked hard all day with great enthusiasm on various tasks alongside some of our own volunteers. A great deal was achieved which we would not have accomplished on our own. We greatly appreciate the ongoing commitment of the Pfizer team to St Mary's and very much hope to see them again. The link with them is through our late colleague and parishioner of St. Mary's, Paul Laugharne. Our next maintenance session will be on Saturday 6th September at 10am.

David Gulley

Food Deliveries We continue to support the needs of our local community at Westerham foodbank, where more households are being referred from a variety of agencies for short-, medium- and longer-term support. We will be delivering on Thursdays 18th September and 21st October. Items needed include cereal, soup, baked beans, jam, pasta sauces, rice, tinned fish, meat, long-life or powdered milk, custard and rice pudding. Please donate if you can. Non-perishable food can be left in the Narthex at St Mary's when open (see opposite for times). Monetary donations will be used to buy more food. Thank you for continued support.

Hilary Vale 01959 577864

St Mary's 100 Club Results for June 2025

16 MH Langford £25 17 C Swetenham £15 41 M Broughton £10 St Mary's £46

St Mary's 100 Club Results for July 2025

80 G&J South £25 43 M&L Lambert £15 71 C Grover £10 St Mary's £46

Life Events We welcome enquiries for baptisms, weddings, funerals and interment of ashes. Further information and qualifying criteria is on the 'Our Services' section of our website www.lttm.org.uk/stmarys, or email stmoffice.lttm@btinternet.com.

Millennium Hall Our Well-equipped Millennium Hall is open for bookings. Enquiries from individuals and groups are very welcome. **Sheila Cook (01959 577443)**

Looking ahead, dates for your diaries

Sunday 5 th October	12.30pm Harvest Lunch
Saturday 18 th October	'Thank You' Coffee Morning for Volunteers & Teams
Sunday 19 th October	Afternoon Pet Service
Sunday 2 nd November	Afternoon All Souls service - followed by tea and cake
Sunday 9 th November	A short Remembrance section during our 10am service
Sunday 7 th December	4pm Carols by Candlelight in St Mary's

CONTACTS

St Mary's Church Office: The Parish Office, High Street, Limpsfield RH8 0DG.

Phone :01883 712512 Email: stmoffice.lttm@btinternet.com

Open Thurs 9.30-13.30 - emails are checked regularly for urgent matters.

Team Rector: Revd Helen Cook 07530 609511

Email: hjwcook@yahoo.co.uk (day off Friday)

Curate: Revd Debra Elsdon 07436 172130

Email: curate.lttm@gmail.com (days off Mon & Fri)

Parish Administrator: Steve Tatler - Church Office Thurs 9.30 -13.30 (details above)

Wardens: Marjory Broughton (01959 541059) / Chris Hancock (01959 577622)

St Mary's Website: www.lttm.org.uk/stmarys

REGULAR TATSFIELD EVENTS AND INFORMATION

Sun	9.30 am	Yoga with Lexy, VH
	10.00 am	Church service – StM
Mon	9.30 am	Tots on Top – CH
	9.30 am	Shape and Tone with Gary - WIH
	1.30 pm	Bridge Club – WIH
	6.30 pm	Cubs - SH
	7.00 pm	Art Group – VH [Term time]
	8.15 pm	Bingo – TVC
Tue	1.00 pm	Not So Young Club (2 nd Tuesday of the month) WIH
	2.30 pm	WI Meeting (1 st Tuesday of the month) WIH
	4.00pm	Paracise VH
	7.00 pm	Scouts and Explorers – SH
	6.15 pm	Barré with Fi - VH
Wed	10.30 am	WI Pop In – WIH
	2-4 pm	Composting Site OPEN
	6.00 pm	Shape and Tone with Gary – WIH
	6.00pm	Over 8s Jujitsu, SH
	7.30pm	Adults Jujitsu, SH
	7.30 pm	Yoga – VH
Thu	9.30 am	Yoga with Lexy, StM
	9.30 am	Shape and Tone with Gary, WIH
	2.00 pm	Scrabble at AMB (2 nd Thursday of the month)
	1.30 pm	Hear Here Sessions – AMB (1 st Thursday of the month)
	6.00 pm	Over 8s Judo – SH
	6.15pm	Barré with Fi, VH
	7.30 pm	Adults (14+) Judo - SH
	7.30 pm	Tatsfield Singers - TPS
	8.00 pm	Table Tennis – VH
Fri	9.30 am	Combat Fitness - SH
	1.30 pm	Short Mat Bowls –VH
	4.15pm	Boom Arts Academy Tots Street Dance – VH
	4.45pm	Boom Arts Academy Lower Junior Street Dance – VH
	5.30pm	Boom Arts Academy Theatre and Singing – VH
	6.15pm	Boom Arts Academy Junior Street Dance – VH
	8.00 pm	Badminton Club – VH
Sat	9.00 am	Under 8s Judo – SH
	10.00am-12pm	Composting Site OPEN
	10.15 am	Over 8s Judo - SH

Venues: AMB - Aileen McHugo Building • CGA - Community Games Area • MH - Millennium Hall • SH - Scout Hut • StM - St. Mary's Church • TACG – Tatsfield Allotments and Community Garden • TVC - Tatsfield Village Club • TPS - Tatsfield Primary School • VH - Village Hall • WIH - Women's Institute

UPCOMING EVENTS – VILLAGE AND BEYOND

SEPTEMBER

6 th Sat	10.00am	Churchyard Tidy Up, StM
6 th Sat	3.00pm	Tatsfield Horticultural Society Autumn Show, VH
7 th Sun	3.00pm	Summer Church Teas, StM
14 th Sun	3.00pm	Summer Church Teas, StM
19 th Fri	7.45pm	Oxted Comedy Night, Barn Theatre Oxted
20 th Sat	7.45pm	The New Foxtrot Serenaders, Barn Theatre Oxted
21 st Sun	10.30am	Village Litter Pick, Westmore Green
21 st Sun	3.00pm	Summer Church Teas, StM
21 st Sun	7.45pm	Abbas Angels, Barn Theatre, Oxted
24 th Wed	7.30pm	Merchant Ship Figureheads, Arts Society, Limpsfield Church Hall
25 th Thu	7.45pm	Round the Horne, Barn Theatre, Oxted (time tbc)
26 th Fri	7.45pm	The Oxted Sessions, Lindisfarne, Barn Theatre, Oxted
27 th Sat	7.45pm	Guns N Jovi, Barn Theatre, Oxted
28 th Sun	3.00pm	Summer Church Teas, StM
29 th Mon	3.00pm	Meet the Beat (Surrey Police), outside Sheree's Store

OCTOBER

5 th Sun	tbc	Harvest Lunch, MH
14 th Tue	7.30pm	THS Garden Club, WIH
14 th Tue	7.30pm	As You Like It, The Oxted Players, Barn Theatre
15 th Wed	7.30pm	As You Like It, The Oxted Players, Barn Theatre
16 th Thu	7.30pm	As You Like It, The Oxted Players, Barn Theatre
17 th Fri	7.30pm	As You Like It, The Oxted Players, Barn Theatre
18 th Sat	10.00am	Wisley Visit, Tatsfield Horticultural Society, Wisley
18 th Sat	2.30/7.30pm	As You Like It, The Oxted Players, Barn Theatre
29 th Wed	2.15pm	Travelling with John Singer Sargent, Arts Soc, Hazelwood Theatre
31 st	Fri tbc	Something Spooky for under 11 year olds, Picnic area

NOVEMBER

4 th Tue	7.30pm	Annie, Oxted Musical Theatre Company, Barn Theatre
5 th Wed	7.30pm	Annie, Oxted Musical Theatre Company, Barn Theatre
6 th Thu	7.30pm	Annie, Oxted Musical Theatre Company, Barn Theatre
7 th Fri	7.30pm	Annie, Oxted Musical Theatre Company, Barn Theatre
8 th Sat	2.30/7.30pm	Annie, Oxted Musical Theatre Company, Barn Theatre
15 th Sat	7.30pm	NDS Concert featuring soloist Mariatu Kanneh-Mason, VH
20 th Thu	7.30pm	Die Fledermaus, Barn Theatre
21 st Fri	7.30pm	Die Fledermaus, Barn Theatre
22 nd Sat	7.30pm	Die Fledermaus, Barn Theatre

DECEMBER

6 th Sat	tbc	THS Christmas Wreath and Table Centre Workshop, tbc
7 th Sun	4.00pm	Carols by Candlelight, StM
13 th Sat	tbc	Tatsfield Singers Christmas Concert, VH

TATSFIELD A CENTURY AGO

In the mid-1920s, tens of thousands of British people were living or working in India and the Tatsfield archives has reflected the connection over the decades. This cutting from the Westerham Herald reports how in September 1925, there was a meeting of the Church Missionary Society at The Grange (now Beaconsshaw) to discuss its plans to help outcastes of the Telugu in India. The hope was to raise £15 (about £800 in today's money) each year from Tatsfield.

But as early as in 1858, Tatsfield had joined together with Godstone in a petition to the House of Commons calling for caste distinctions to be ignored by the then colonial administration in India. More than a century later, in 1979, *Leslie Brown*, a former parish councillor, was reported in the Sevenoaks Chronicle as walking from the north of Scotland to Dover to raise money for deprived children in India.

INDIAN VILLAGES.—A missionary gathering was held by the kind permission of the Misses Prichard at the Grange, when there was an excellent attendance, with Mr. V. Richards in the chair. The Rev. E. E. Vitt, of Ellore, Southern India, gave an interesting description of the work of the Church Missionary Society, in the Indian villages of the out-castes of Telugu. In no other country, he said, were the people treated as were the out-castes in India, literally worse than beasts. They did all the general work for the caste-class. Before the British Government came their plight was worse than at present. It was far worse in the native states. It was absolutely impossible to run a school if the out-caste children attended.

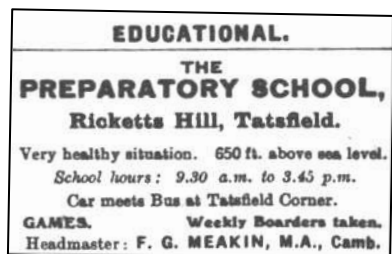
On local issues, the Parish Council meeting of September 1925 was anxious about the time it was taking for the district council to build the houses the village so desperately needed, but on the positive side it was learned that approval had been given for a seat at the foot of Church Hill as the PC had wanted. Also among the pre-occupations of members a century ago was what was described as the '*disfigurement*' of the green by litter, and the damage caused to trees by straying horses – maybe the 1920s equivalent of 'wheelies on the green'.

Meanwhile, the Women's Institute called for the 'eyesore' pond to be cleaned and '*re-concreted*'. Until now, it was thought the concreting of the pond happened only fifty years later.

On another page, the Herald reported the success of '*Cooleen Scamp*' at winning prizes at the Eastbourne Canine Society. The dog belonged to Mrs Laurie of the house called Cooleen on Ship Hill.

Researching local history inevitably leads to questions being asked and sometimes answers are found. This month we have one of each.

Does anyone know where a house called **Poldew** was? An advertisement in The Westerham Herald in September 1925 announced the auction of Poldew after the death of its owner, John Lander. There is no trace of the house or of its owner in any official document in the archive.



One question has been answered. In a previous article I mentioned an advertisement for one of the small private schools in Tatsfield. In September 1925 the advertisement had been updated to make it clear that the school was in Ricketts Hill.

Ian Mitchell, Tatsfield History Project -
Tatsfield.history@talk21.com Tel: 577376

Website: <https://e-voice.org.uk/tatsfieldhistoryproject/>

VILLAGE LITTER PICK

JOIN US ON SUNDAY
SEPTEMBER 21st

10.30am

**START PICNIC AREA WESTMORE
GREEN**

**LITTER PICKERS AND SACKS
WILL BE PROVIDED PLEASE
BRING YOUR OWN GLOVES**

ORGANISED BY TATSFIELD PARISH COUNCIL

WILDLIFE GARDENING TIPS FOR SEPTEMBER

Firstly, I just want to put a big shout out to the stunning new '*Garden For The Future*' at Sheffield Park down near Hayward's Heath. It is a bold and beautiful experiment in a Grade 1 listed garden, and it really is a horticultural work of art. Highly recommended to all you garden and nature lovers!



What a great Summer it has been! And now it is September already, which is a big month for wildlife to get ready for the cold months ahead. Hedgehogs will hibernate in October, so September is when they need to fatten up enough to sleep through to Spring. You can help them with good quality meaty cat biscuits in a hedgehog feeder tucked away somewhere quiet; especially if you know you are lucky enough to have some of these little guys visiting. It's a sad fact of life that many don't make it through to their first birthday because of habitat & food depletion. Hedgehog feeders are readily available on the web, or there are plenty of details online as to how to make your own.

Another thing I always make a priority for September is to plant plenty of early flowering bulbs and for the last few years I've had these blooming from Christmas onwards. They really cheer the garden up in the grey winter months, and they will also provide very welcome food for many of the garden visitors that don't hibernate. Jon has oodles of good advice on what to plant for winter blooms but my personal favourite is Rijnveld's Early Sensation – ours flowered last Christmas Eve and I found a Bumble sheltering from a rain storm inside the daff's trumpet; when the rain stopped the Bumble flew away home having stayed safe in the shelter of the daff – how cool is that? Be aware though that some of the more exotic engineered hybrid daffs are utterly useless to pollinators because the flower has become mutated and is no longer accessible. Best to stick to the traditional ones if you're planting for wildlife.

Interesting fact of the month... There is a creature that visits your garden that has superpowers. It can travel vast distances at speeds so fast that even hawks are left behind. You could even take it 1300 miles away and it would beat you home despite not having a satnav. But the most amazing thing of all is that it produces milk to feed it's young to build them up fast and strong. You might not think that's odd except that this is a bird, and whoever heard of a bird producing milk? Well, these do, and perhaps the most impressive thing is that it is not just Mum; Dad does it too! Mum and Dad are also monogamous and they stay devoted to each other for their entire lives and also share the parental duties equally. You might say that's a superpower too. And the most surprising thing is that this bird is the humble and much maligned pigeon.

I must confess that pigeons never seem the smartest of creatures but there is credible scientific research that shows that pigeons are as smart as monkeys in solving problems by using arithmetic – it's hard to believe, but apparently true! Anyhow, like all garden wildlife, they could do with a helping hand through the cold months ahead, so please do put some food out if you can. **Jim Kenney**

THE TATSFIELD GARDENER IN SEPTEMBER

This is the month when we gardeners reflect on the gardening year, the successes and failures and try to work out if it was because of our efforts or, was it Mother Nature who helped or hindered us! In my experience it is more often a mixture of both, and every growing season is different from the last season, and probably next one too!



Brugmansia (Angel's Trumpets).

I can't remember picking cucumbers in early June after planting in the first week of May with the plant barely 18" tall! I will admit that this year I bought grafted plants from Knights in Woldingham. They were grown in my grow boxes made for me by David Bacon from waste pallets, I filled them to the top with our own Tatsfield 'Black Gold' with added slow-release fertiliser. Happy to report that they are still going strong having reached the top of the cord and are now growing along inside the roof of the greenhouse. I am still picking tomatoes, again grafted plants this year; they are now over 7' tall with all the scruffy leaves removed to expose the trusses of fruit to help ripening.

I grew Nasturtiums from seed and trained them up a trellis quickly filling a whole fence panel. I did notice clusters of eggs here and there and they quickly hatched, and I had an invasion of caterpillars of the Large White Butterfly. Within a week they had devoured the lot despite being eaten in large numbers by Blue Tits and Wasps; they then trotted off into the nearby hedge to pupate and then hatch out adding to the other butterflies in the garden, many more than in recent years.

I have had to thin out the bunches of young apples on my Bramley Seedling and Howgate Wonder (some say it is the biggest apple of all); if left as they are, the trees would struggle to make each one into a good-sized apple. It is many years since I have had to do this.

If you have grown Fuchsias and Geraniums this year, now is the time to remove the top growth and trim them down to an inch or so, put them firmly in a sandy mix, or proprietary cuttings mix, water carefully and place in a warm shady spot, they should root in about three weeks. When rooted, put them singly into small pots or multicell trays. Water carefully and keep in a cool shady place. As autumn approaches, reduce the watering and move them into a frost-free place to overwinter, more on this in my October notes.

We have picked lots of Blackberries, damsons and sloes, I am going to try and keep some of them until this time next year as I can't imagine having such big crops as this year!

My success with germinating the Brugmansia (Angels Trumpets) seeds – these are known to be difficult! – has left me with a small forest of foot tall young plants! If you fancy trying your hand at growing this lovely tender perennial just give me a call on 577100!

Jon Allbutt

TATSFIELD COMMUNITY COMPOSTING GROUP

We are now four months into the composting season, and it has proved to be very busy, with an unusual number of folk bringing in raw materials for processing, sometimes in quantities beyond our capabilities, nonetheless we persevere. The new machine is working very well; we have been so busy that we are using both machines to process the raw material. This greater influx has resulted in the team making over 30 batches of new compost so far, so we could be heading for a record!

Please remember that we are doing this as volunteers so would appreciate your help when considering bringing material to us. Keep it separated, keep it mud free and keep extraneous objects out and keep the quantity small. Any large quantities should be taken to the Bond Road recycling centre in Warlingham.

We are always in need of additional volunteers so if you use the site and want it to continue, please consider volunteering if only once a month.

The site is open 10am – 12pm on Saturdays and 2pm - 4pm on Wednesdays subject to volunteer numbers.

If you do intend using the site please make sure that you have become a member of the THS by paying your membership fee and receiving the 2025/26 Yearbook.

We are investigating the possibility of replacing our wooden composting bins with new ones made of recycled plastic. We are **searching** for a volunteer who can prepare CAD drawings so that we can get estimates of the cost and then apply for grants to cover the costs.

If you can help with the CAD drawing or would like to volunteer on the site please contact Jon Allbutt 01959 577100, Tatsfield Community Compost Group



YOUR VOICE MATTERS, JOIN THE RESIDENT PANEL

Do you live in council housing, a housing association home, or a low-cost home ownership property like shared ownership? Then sign up and join the government's national Resident Panel. This is your chance to share your views directly with government ministers and officials and help improve social housing for the future.

As a panel member, you can: give feedback on housing policies and plans; share your own experiences; join discussions and research that could shape change.

This a valuable chance to have your say and make a difference. You need to apply online by 11pm on Sunday 7 September. To find out more and get the link email questions to: residentpanel@communities.gov.uk



TATSFIELD ART GROUP is a fun, vibrant and friendly group of enthusiasts of all ages and artist levels. We embrace art in all its forms and have demonstration/workshops (run by members and professional artists) an annual exhibition and social events as well as exhibiting at several different venues. We are a community of local people intent on making, creating, discussing and appreciating art, who believe art is for all, no matter what your age or background, you're an artist if you make art. Art is something you can get better at through instruction and practise. We aim to make the process of learning enjoyable, inspiring and most of all fun! Join us to take some time out to unwind and explore your creative side, from a relaxing evening of painting to a whole host of demonstration/workshops. Perfect for those who want to learn an additional skill. There will be lots of subjects and mediums to choose from in our new 2025/26 programme. We can take you on a fascinating journey through a variety of painting skills, which will give you the opportunity to create artwork of your choice using your favourite medium. We recommend you do not purchase a lot of expensive art equipment, join us for two free sessions before you make any decisions. We have a list of recommended art equipment that you might find helpful.

Our first autumn session begins on Monday 8th September, from 7pm until 9.30pm in Tatsfield Village Hall. Carol Gaskell will be running a fun workshop titled **'Palette Knife Play'** you can purchase a set of palette knives very cheaply as well as acrylic paints, so contact me and I will let you know where. Refreshments are provided at all our sessions. On Monday 15th September professional artist Paolo Francis will demo and then a workshop titled **'Snow Scene in acrylics using a thickening medium'** and provide one to one guidance and instruction.



the children's 2025 artwork was amazing!

Exciting news - this year we have been given a grant from the Roseheath Foundation which will allow TAG to work with the children of Tatsfield Village school, running several workshops. Also, the children of Tatsfield School will be invited to showcase their competition entries at our big summer exhibition, which in 2026 will be held on 2nd – 4th May.

If you would like to become a member, it will allow you to take part at all our demos/workshops and to be included in our annual exhibition at no extra cost. Or if you would prefer to attend the occasional workshop the cost will be £15 per session. Our new 2025/26 calendar will be in October's magazine.

You can find us on [Facebook @Tatsfield Art Group](#), [Instagram @tag_tatsfield_art](#). If you would like more information, please contact Sandra 07867502235 or Carol 07815775859. Our door is always open Monday's 7pm until 9.30pm at Tatsfield Village Hall in term times, if you fancy trying something new this year, pop in and have a chat.

NIGEL'S NATURE NOTES



This photograph is dedicated, with thanks, to those who give their time to maintain the grounds surrounding St Mary's Church; always with nature in mind. Unfortunately, this year I arrived just after the harvesting of the hay. This image is from 2024. I hope no one minded the temporary removal of the flagpole!

I've been hallucinating a lot lately. Or have I? Everywhere I go I'm seeing Large and Small whites, Red admirals, Peacocks, Commas, Gatekeepers, Meadow browns... and of course, there are those little brown jobs that fly around in the long grass. Due to my inexperience, I would need to capture and release those to make an accurate identification. Others, however, seem able to spot an uncommon butterfly miles away and instantly know what they are looking at. Ruth and Jim (Yeeles) fall into this latter category. Here's the latest news from Jim, one of our resident 'adventurers':

(20.07.25) *'Some good butterfly news for a change. Four years after discovering a few **Elm** trees at Hill Park, I was beginning to doubt my tree-top sighting (two years ago) of a lone **White-letter Hairstreak**, because I have subsequently failed to find any concrete signs of breeding. Imagine my delight in finding an adult female (top photo) alongside two early **Brown Hairstreaks** nectaring on our faithful **Hemp Agrimony** last Sunday. I even managed to grab a few quick photos!*

*My garden butterfly sightings have certainly bounced back this year and we're currently up to seventeen species including a new record for this area - **Dark Green Fritillary** (bottom photo). Not a pristine specimen but I gather that this species is doing very well this year and expanding its range, so keep a lookout.'*

Well, Jim, what can I say - White-letter hairstreak, Brown hairstreak, Dark green fritillary... Is there no end to your powers of observation? I guess spending more time than most of us out of doors and in a more varied environment/ecosystem must play an important part in your success. If you and Ruth weren't out there, working away over at Hill Park, we would be so much poorer in terms of species identification which, as we all know, is time consuming and no simple task. Allow me to explain to the general reader. We have ten Fritillaries in the British Isles. To the untrained eye, such as mine, it is difficult to identify more than two or three from illustrations or photographs and infinitely more difficult when they are flying around a field or up in the treetops. Even when using habitat and plant preferences as a guide, making an identification in the field remains problematic, particularly now that climate change is affecting the breeding range of so many species. Thankfully, Jim seems to have a decent camera that allows leisurely reference at home. Pretty essential I would guess as, so my guidebook informs me, *'Fritillaries vary greatly in the spotted pattern on their wings and in the background colour. This can create difficulty in distinguishing one species from another.'* Mmm... problems piled on problems!



Thanks for your contribution, Jim. There are many naturalists and gardeners around the village who are enjoying the influx of butterflies this summer, so I'm sure your notes will be received with great interest.

And hopefully, by now, Martin Allen's greens will have been inundated with hungry 'cabbage white' caterpillars. We know from last year how much he looks forward to feeding them. Good job, Martin! They'll soon be pupating; secretly preparing to burst forth, animating your garden and those of your neighbours next summer.

If you haven't yet found the time to enjoy one or two local walks during this glorious summer I urge you to do so soon. It won't be long before the hues of autumn are with us, quickly followed by the gloom of winter. Try not to be one of those sitting around the fire (or radiator) thinking, *'Oh, if only I'd spent more time outdoors enjoying the warmth of those long-gone summer days.'* **My advice?** Turn off whatever device you're using, get off the sofa, put on your shoes and seize the day - before it's too late!

Any news or views? Contact: nigelshaw2000@hotmail.com

Alternatively, drop a note in to 'Primrose Ridge', Greenway.

THE NIGHT SKY IN TATSFIELD – SEPTEMBER 2025

“The early bird catches the worm”, so the saying goes and it’s one that applies equally well to astronomers who are up and about before sunrise, particularly now. In mid-September, around 5am to 5.30am, the planets Venus and Jupiter are visible in the east along with a waning crescent Moon. The other added attraction is that the brilliant “winter” constellations of Orion and his retinue of dogs and other animals lie above the southeastern horizon. The bright star Sirius, the brightest in the night sky, is 15° in altitude although because it is low down, and shining through a thick layer of the atmosphere, won’t appear to be exceptionally bright.

Venus is a brilliant object, lying close to due east, with a similar altitude to Sirius. Back in May it was in a position where it *appeared* to be at its furthest from the Sun although this is purely a line-of-sight effect caused by the positions of the Sun, Earth and Venus with respect to each other. Now the planet seems to be drawing closer to the Sun and will pass behind it in early January 2026 before it reappears in the evening sky again.

Jupiter is also bright and lies further to the west of the more brilliant Venus as well as being higher in the sky. Its altitude is about 45°, so if you remember that the overhead point, known as the zenith, is 90° then Jupiter is roughly halfway between it and the horizon.

On the evening of 7th September there will be a total eclipse of the Moon. The event begins at 5:27pm when the Moon is still below the horizon. It rises a little south of east at 7:30pm so the eclipse has been in progress for a while by then and has already reached totality. However, unlike totality during a solar eclipse which lasts for just a matter of minutes, totality during a lunar eclipse can last much longer. In the case of September’s event, totality lasts for 1 hour and 22 minutes, concluding at 7:52pm. Of course, this isn’t the end of the eclipse, just the total phase. We can then watch for another hour whilst the partial phase plays out as we see the Moon move gradually out of the Earth’s shadow to finally leave it at 8:56pm.

Earth reaches the autumnal equinox on September 22nd at 7:19 pm when, day and night are equal. This isn’t precisely true because the Sun is a disc and daylight is calculated from when the first chink of it appears above the horizon until the last chink of it has gone. However, astronomers calculate the equinox to occur on the day and at the time that the centre point of the Sun is exactly over the equator and not by how much daylight there is.

I hope some of you were able to watch the program about light pollution on BBC1 in July. I’ve spoken here about it before and will return to this important topic later, but it highlighted the negative health effects not only on the animal kingdom but also on us humans. You have simply to stand outside at night to observe the social inadequacy of your neighbours who have a need to floodlight their homes and gardens without a shred of environmental conscience.

Brian Mills FRAS

THE ARTS SOCIETY LIMPSFIELD

Merchant Ship Figureheads by Helen Doe. **Date: Wednesday 24 September 2025. Evening lecture only starts at 7.30pm** Limpsfield Church Hall and refreshments will be served before the lecture. Guests: £10.

Why were they created and what and who did they represent? The nineteenth century was the height of wooden merchant shipping around the world and harbours were once filled with ships of all sizes, many with figureheads. Wooden ships were built around the coast of Britain and Ireland. Locally owned, these ships sailed across the oceans and their stories relate to these ship owning communities. The talk will look at myths connected with figureheads, famous figureheads and lesser-known ones. It will consider the background to a figurehead and the people they represented. It finishes with one figurehead that inspired the career of a famous novelist.

At Home Everywhere and Nowhere. Travelling with John Singer Sargent by Mary Alexander. **Date: Wednesday 29 October 2025. Afternoon lecture only starts at 2.15pm.** Guests: £10. **Note Alternative Venue: Hazelwood Centenary Theatre, RH8 0QU.**

In childhood and throughout his life, Sargent was described as 'at home everywhere and nowhere.' Born in Florence to itinerant American parents, he adopted a frenetic pattern of international travel throughout his life. The range and duration of his travels is truly staggering. Renowned as a society portraitist, in 1909 his dramatic decision to refuse all further commissions provided a new-found freedom. Sargent also indulged his fascination for all things 'curious' - a favourite word. Accommodation was variable - ranging from the White House in Washington DC to a tent in the mountains. We will explore his ability to capture a sense of place - the atmosphere, light, colours and textures of a land or seascape - with an intimately personal and often unusual interpretation. Whether it be luscious pomegranates in a Spanish orchard, brilliant hues of poppies in the Cotswolds, silver light on glistening fish in Norway, jewel-like reflections on water in Venice or Lake Garda, or the intense sunlight and heat of Morocco and the desert. And his most daring journey of all, in

1918 aged 62, as a war artist travelling to the war-torn trenches in France. Many of the works shown will include examples from private collections around the world and correspondence and photographs from friends, family and travelling companions.

HOLLYWOOD COMES TO THE BAWTREE HALL: NDCO AT THE MOVIES



The magic of Hollywood came alive at the Bawtree Hall on 15th June as the North Downs Community Orchestra (NDCO) presented its enchanting "At the Movies" concert. Under the dynamic baton of conductor Anna Maria Tabor, in what was only her second concert with the orchestra, the ensemble delivered a captivating performance that transported an enthusiastic audience straight to the silver screen.

Anna skilfully guided the orchestra through a diverse program of iconic film scores, enhancing the experience by sharing fascinating anecdotes and background information about the movies from which the pieces originated.

The program featured beloved classics such as "**The Pink Panther**," "**The Blue Danube Waltz**," and a vibrant selection from "**Moana**." This last piece, notably written by Lin-Manuel Miranda before his widespread fame with *Hamilton*, showcased a different **aspect** of his incredible talent. A highlight of the afternoon was undoubtedly the interactive rendition of "**The Sound of Music**," where audience members were provided with lyrics, creating a joyful sing-along that resonated throughout the hall.

Adding a special touch to the performance was the orchestra's patron, renowned comedian and musician, **Rainer Hersch**, who joined the viola section for the concert. Following the performance, Rainer expressed his delight, stating it was a "lovely concert" and that "the audience got a treat and clearly loved it" high praise indeed.

The orchestra's hard work and dedication were evident in their precise and heartfelt delivery of each piece. Their cohesive sound truly brought these well-known movie themes to life, creating a memorable experience for the visibly engaged audience, a mix of members' families and friends, who offered warm applause and participated enthusiastically during the sing-along.

As the concert drew to a close, heartfelt gratitude was extended to the orchestra's dedicated Chair, **Pam Deverill**, who is set to step down in September. Pam has been a foundational pillar since the orchestra's inception, tirelessly working behind the scenes, navigating various obstacles, and ensuring the orchestra's continued success and growth. Her commitment has been invaluable.

Looking ahead, the orchestra invites all to **save the date** for their next concert on **Sunday, 2 November 2025, at Caterham School**. Another memorable musical journey is surely in store. Please keep an eye on NDCO website www.thefunorchestra.co.uk and NDCO Facebook page for any updates. **Lin Larmer, Cello and Trustee of NDCO**

NEW BLADDER CYSTOSCOPY COUCH TO CUT WAITING TIMES BY UP TO 50% FOR CANCER PATIENTS



Local charity, The Chartwell Cancer Trust, committed to providing support for NHS Services across London and the South-East, have launched an urgent appeal to raise **£9,500** to purchase a vital piece of diagnostic equipment for **Beckenham Beacon's Urology Unit**, part of **King's College Hospital NHS Foundation Trust**.

This life-saving equipment will help meet rising demand for bladder cancer diagnosis across South-East London, where referrals have soared, the surge partially attributed to increased public awareness following high-profile cases such as **His Majesty King Charles III** and **Olympic champion Sir Chris Hoy**.

Currently, the service at Beckenham Beacon can only perform essential bladder examinations known as **flexible cystoscopies** - in one clinical room. This equipment, a specialist diagnostic couch, will allow the service to double its capacity and reduce waiting times, with the aim of diagnosing suspected bladder cancer patients within 10 days of referral. This aligns with national NHS targets and can significantly improve treatment outcomes.



King's College Hospital NHS Foundation Trust provides cancer services for around one million people in South-East London, including the boroughs of Southwark, Lewisham, Greenwich, Bromley, Bexley and Lambeth, and is a national centre for specialist care.



The Chartwell Cancer Trust has already made a difference across the region by funding vital cancer equipment and support services. Now they are calling on the community to get behind this urgent appeal and help improve access to potentially life-saving diagnoses and have set up a Crowdfunder to raise the funds needed to make it happen. To make a donation, scan the QR code or visit <https://www.crowdfunder.co.uk/p/bladdercancercouch>

TATSFIELD CRICKET CLUB MEMORIAL MATCH REPORT: TATSFIELD vs CHEVENING AMBLERS

On 3rd August, Tatsfield Cricket Club welcomed regular friends Chevening Amblers to Furze Corner yesterday for a return fixture after a narrow loss (by eight runs) to them when we played at their ground earlier in the season.

However, this match was important for much more significant reasons than the usual inter-season rivalry. As regular followers will know, only a few weeks ago we heard the dreadful news that former skipper, mentor and friend Kevin Eames had suddenly and tragically passed away in his adopted homeland New Zealand. It was with sadness but also a great degree of pride from the long association that many of us had enjoyed with Kev that plans were put in place to make this week's fixture a memorial game to raise funds for charities close to his heart and, more importantly, honour him while celebrating the memories that we had shared together.



It was thus agreed with Chevening that we would play a 40 over game, with Teas to be kindly laid on by Anne Eames, the bar fully stocked, and all proceeds from the game along with any other donations to be pooled together and split between two worthy causes: Ronald McDonald House, who provide accommodation for families of children undergoing lengthy hospital treatment; and Brooklyn Junior CC, the club in New Zealand which Kev had inspired with all of his cricketing enthusiasm and which, thanks to his determined efforts, now has two thriving girls' teams.

We were thrilled with the number of people who came up to support the event - family, friends and more. It has been many a long year since the car park at Furze overflowed, and it is a testament to the man we were celebrating that so many turned out.

Tatsfield skipper Chris Heasman won the toss and elected to bat, with Kev's Dad, long-term player and President-for-life Les Eames opening the batting alongside Kev's brother, Dave Eames. Having moved to Scotland (where apparently they do actually play cricket) some years ago it had been a while since Dave had turned out for Tatsfield, and despite looking in excellent touch during an impromptu pre-game net session, sadly he was tempted into a waft at a wide delivery from the third ball of the game and succeeded only in glancing an edge through to the Chevening keeper who took a fine catch behind the stumps to send him on his way for a duck.

Les, playing his first game for two years, played several firm strokes and was looking solid until the accurate opening bowler got one through his defences and knocked him over for two.

There followed a fine partnership between Tom Ellis and Sam Harber, who put on a run-a-ball 48 for the third wicket, before Tom (28) chipped a return catch to the opener -

Tom's innings particularly notable as it consisted of just 6 scoring shots - two sixes and four fours!

Chris Heasman joined Sam in the middle, and another steady partnership took shape. The score reached 90-3 after 20 overs and, with the pitch offering some variable bounce it was felt that anything approaching 200 was likely to be a tricky total to chase down in the second innings. The excellent 53 run partnership was finally broken when Sam, who had worn several balls on the body during his innings, was trapped LBW by one which kept a little low, departing for a well-made 36.

Next to the crease was Matt Perrett, who initially played carefully and supported Chris who was easing through the gears towards his half century, only to fall agonisingly short on 49 when he was pinned in front. At this point, the score was 167-5, and Tatsfield looked nicely poised to close in on the 200 mark with six overs and one ball left of the innings.

What followed was complete carnage.

In his next 30 balls, Matt smashed 77 runs - with eight fours and four enormous sixes as he seized the game by the scruff of the neck and walloped the ball to all parts, being particularly brutal straight down the ground and through the leg side.

Alex Glover, who had joined Matt at the fall of Chris' wicket played his part; running hard for twos and ensuring that he pinched singles wherever possible to get Matt back on strike.

Matt brought up his maiden century in fine style in the final over of the innings, and was also able to send the final deliveries sailing to the rope as he ended on an astonishing 116* - one of the most spectacular innings witnessed at Furze - and ably supported by Alex who ended up 2*, but who contributed far more than the nominal runs to an outstanding partnership of 95 runs in just 37 deliveries.

Thanks to Matt's fireworks, Tatsfield had posted an imposing 262-5 in their 40 overs, with the pitch still offering variable bounce to the bowlers.

Players and supporters alike then enjoyed the wonderful teas laid on by Anne, with many heard to remark that it was one of the best they had enjoyed for a very long time. Enormous thanks to Anne for a superb spread.

A raffle was held at the end of the tea interval with three prizes of fabulous hand-turned wooden bowls being very generously donated by the former Tatsfield stalwart Alan Thorpe, who had made the long drive up from his new home in the southwest just to be with everyone on this special day. The quality of the prizes on offer was properly reflected in the funds raised by the raffle - £400 - and the three lucky winners were rightly thrilled with their spoils.

Although most of the Tatsfield team had indulged far too generously in the excellent teas, there was nevertheless a spring in the step as they took to the field. Chevening had very graciously allowed Tatsfield to utilise a couple of substitutions to ensure that everyone who wanted to play in this special game was able to take part, and it was a great pleasure to have 16 year old Martha Coleman, one of Les and Annes' grand-nieces who had come up for the event, take the new ball. Martha immediately showed her skills

returning figures of 2-0-4-0 with a high degree of accuracy and control - we were not at all surprised to learn from Les that she is a regular for her local team and has previously taken 5-wicket hauls. She had to dash off immediately after her spell but would be welcome back for a few more overs any time she is in the area. It was particularly fitting that she was able to take part given Kev's links to girls' cricket in New Zealand and his passion for growing the girls' game as a coach and mentor.

Chris Maynard took the new ball from the other end and kept things tight, with a few edges flying through the slips before finally snicking off the opener through to Matt behind the stumps who took a routine catch.

Simon Hendry (5-2-9-1) then accounted for the other opener, well held by Dave Eames at point, as a well-deserved reward for an excellent spell which threatened the batsmen with both bounce and swing.

Asher May was next into the attack and, bowling around the wicket to a left hander for the first time in his short cricketing career, he induced a thick edge which was brilliantly held by Les Eames at a deep 2nd slip. Asher's excellent spell concluding with figures of 4-0-8-1.

Les was given the tricky job of bowling up the hill at a point when Chevening were desperate to up the scoring rate and unfortunately went wicketless with returns of 4-0-35-0.

Andy Moore bowled another tight spell of 5-0-11-0 which, although he was unlucky not to take a wicket himself, did put sufficient pressure on the Chevening batters to instigate a run out as Chris Heasman's pinpoint throw from the fine leg boundary enabled Andy to whip off the bails leaving the batsman comfortably short of his ground.

Chris Heasman then brought himself on to bowl and was superbly economical (though the Chevening scorer admitted that the bowling figures got a bit iffy at this point as he had too many distractions going on!). Nevertheless, Chris first drew a catch from the dangerous number 4, which was safely pouched by Tom, and then comprehensively bowled the number 6 who was sadly hampered by a muscle strain. Chris' outstanding figures of 5-2-2-2 perhaps being a little inaccurate as they wouldn't technically have been possible, but that's what the book reads, and it was a fine spell that really turned the screws.

Dave Eames decided that his shoulder could only last one over but bowled well for figures of 1-0-2-0.

Chris Maynard was brought back to hurry through a couple of overs, and he finished with figures of 8-2-18-1 as some of the younger Chevening batters played with composure and skill to preserve their wickets, fully knowing that the chance of victory had passed but determined to put up a good fight.

Matt was allowed to take off the keeping pads but then instructed to bowl up the hill and was rewarded for his all-round efforts with a wicket as Andy took an excellent diving catch at point - Matt's final figures 4-0-10-1.

Sam Harber was perhaps surprised to be thrown the ball towards the close of the innings but also picked up a wicket with a skied catch from his own bowling, finishing with figures of 2-0-17-1.

The final total for Chevening was 141-8 from their 40 overs, and Tatsfield had run out convincing winners by 121 runs.

Even more important than the result of the game however was the total raised for the two charities in Kev's honour - a truly astonishing and phenomenal £1,600 on the day. A heartfelt THANK YOU to everyone who came along, supported and gave so generously.

The list of thanks must also single out the following people:

Matt and Lee Trivett for preparing the ground so diligently to ensure the game could go ahead, despite some torrential rain earlier in the week.

Andy Moore for setting up and running the livestream which enabled those who could not be present in person to join in with the atmosphere of this special occasion.

Les, Anne and Dave for printing posters, setting up a touching photo tribute to Kev, arranging and preparing the excellent teas and spreading the message of the event far and wide.

Chevening Amblers for agreeing to join us for this special game and for giving generously in both time and money.

Once again, thank you also to everyone who came from far and wide to share in Kev's love of cricket, of Furze Corner, and of Tatsfield CC where he was such a valued member for so many years, and where his mark will continue to be felt for many more years to come through all those who were lucky enough to have played with him and were honoured to call him our friend.

Chris Maynard

TATSFIELD 100 CLUB

Congratulations to the winners of the Tatsfield PFA 100 Club for May, June & July 2025:

MAY

1 st Prize	Pete Harrison	£42.00
2 nd Prize	Chris Maynard	£28.00
3 rd Prize	Matthew Perrett	£14.00

JUNE

1 st Prize	Michael Wiggins	£43.50
2 nd Prize	Paul Menham	£29.00
3 rd Prize	Jon Dunn	£14.50

JULY

1 st Prize	Justin Naughton	£42.00
2 nd Prize	Tom Ellis	£28.00
3 rd Prize	Roger Luck	£14.00

Thank you for supporting sport in Tatsfield. If you know of anyone who wishes to join the 100 Club (for a modest £6 per month), or if you would like additional numbers, then please contact me at leames200@gmail.com. **Les Eames**

PPHS

Professional Plumbing
& Heating Services



**Your 5 Star
Plumbing and Heating Specialists**



BOILER INSTALLATION, REPAIR, REPLACEMENT, SERVICING & SAFETY CHECK

We can advise you of the best boiler to suit your needs, budget and specification as well as installing and maintaining your current boiler. PPHS would recommend an annual boiler service to keep your boiler running at full efficiency, prevent any breakdowns and save you money.

PLUMBING & PIPEWORK

Whether you need a leak repaired, a new tap installed, radiators repaired or fitted or general plumbing and pipe work, we can help.

RADIATORS & POWER FLUSHING

A thorough powerflush will improve heat distribution throughout the property, subsequently lowering household energy bills and increasing system reliability.

BATHROOMS

PPHS can do as much or as little as you need to help you realise your dream bathroom - including helping you choose the materials, sorting out the plumbing and electrics, plastering your walls, tiling and installing the furniture



11 Years

10 Years

10 Years

10 Years

10 Years

10 Years

Scan Me



07702 082 193



peter@professionalplumbingandheating.co.uk



www.professionalplumbingandheating.co.uk

GLEN DURHAM

Your local, personal and dedicated

ESTATE AGENT

Moving home this summer?

Maximum Exposure, Optimal Results:

Enjoy exceptional service, advanced technology, and nationwide marketing and achieve the best outcome for your property sale with me, Glen and The Agency UK.

Expert Guidance and Support:

As an experienced agent, I will provide personalised assistance throughout the selling process, ensuring a smooth and successful transaction.

Stress-Free Experience:

Let me handle the complexities of selling your property, allowing you to relax and focus on what matters most to you.

glen.durham@theagencyuk.com

07784 124 888

Property **Sold** Properly

SALES - LETTINGS - PROPERTY MANAGEMENT





5000 sq ft of beautiful furniture and gifts over 3 floors

WWW.LONDONROADFURNITURE.CO.UK



THE LONDON ROAD FURNITURE COMPANY

LONDON ROAD, HALSTEAD,
SEVENOAKS, KENT, TN14 7AA

OPEN 6 DAYS A WEEK (CLOSED WEDNESDAYS)

Tel 01959 533433





**Block Paving • Resin Drives
• Tarmacadam • Patios • Fencing
Walls & Steps • Brickwork**



Please Call For Free Estimates & Friendly Advice



Driveways by Design

**Office: 01322 518 056
Freephone: 0800 747 1580
Direct: 07554 092 140**

www.firmacontractorsltd.co.uk

The Old Barn, Off Wood Street, Swanley Village, Kent BR8 7PA

MURRELL
Electrical Services 

Local Electrician

Part P Registered

*

Fully Insured

*

No job too small

*

Free Estimates

07847 395 437



DAVID WAITE PROPERTY MAINTENANCE

Private & Commercial

Mob: 07949 307906

Email: djw2261@aol.com

Hedges Cut. Tree Work

Log Cutting & Splitting

18-Ton Log Splitter

& man available

Grass Mowed. Turfing

Overgrown Gardens

Winter Tidy Ups

Patios, Sheds Erected

Fencing Repairs

Brickwork Repairs

Gutters Cleaned & Repaired

Internal Painting

Fully Insured



079 75 79 79 75

OAKLANDFENCING@GMAIL.COM

ALL FENCING WORK UNDERTAKEN:
• TIMBER • CONCRETE • METAL • GATES • SHEDS •
REPAIRS • DOMESTIC & COMMERCIAL •
EMERGENCY ATTENDANCE • FULLY INSURED •
• FREE ESTIMATES •

THINK FENCING... THINK OAKLAND

Slimming World

feel
real
good

free
recipe book
worth £4.95*

BIGGIN HILL
ST MARK'S CHURCH
CHURCH ROAD
TN16 3LB
TUESDAYS AT 5:30PM
CALL SOPHIE ON 07929 365228

BIGGIN HILL
BLUNDELLS SQUASH CLUB
JAIL LANE
(OPP CHARLES DARWIN SCHOOL)
TN16 3AU
WEDNESDAYS AT 10:00AM
CALL SOPHIE ON 07929 365228

real food, real support, real results

*When you commit to 12 weeks of group support between 22nd Dec 2024 and 29th Jan 2025. Price shown is RRP. Terms and conditions apply. Visit slimmingworld.co.uk/offers for more information.

Slimming
WORLD

touching hearts, changing lives



Bringing London training and experience to your doorstep,
specialising in Residential and Commercial Property transactions.

Property Enquiries

Nichola Stokoe - NS@cameronclarkelawyers.com

020 7018 4000

Kent Office First Floor, Genesis House, 1-2 The Grange, Westerham, Kent, TN16 1AH

London Office 25 Eccleston Place, Eccleston Yards, Belgravia, London, SW1W 9NF

www.cameronclarkelawyers.com



All types of property
maintenance
and refurbishment
works undertaken.
For an estimate
please call

**Stuart on
07802 888774**



Entre Nous Lingerie

4 London Road, Westerham, TN16 1BD



*Come celebrate
our 20th
Anniversary on
the 23rd and
24th September*

*Free gift with
every purchase!*

Entre Nous is a small independent lingerie shop in
Westerham, owned by Jane and Kate, who have
over 18 years of experience.



10 – 4 Tuesday to Saturday
www.entrenouslingerie.co.uk
01959 563975



NEED ACCOUNTING SERVICES?



DevonshireGreen

Accounting | Taxation | Wealth Management

Who we are

Devonshire Green is a team of qualified accountants with over 90 years combined experience. With offices in **Westerham & Tatsfield Village**, serving clients in the immediate surrounding areas and nationwide Our team includes tax accountants, financial advisers and wealth management experts.

What we do

- Personal tax returns - self-assessment
- Limited company accounts
- Sole trader accounts
- Management accounts
- CIS for contractors & subcontractors
- Payroll
- Tax planning
- VAT returns
- Bookkeeping
- Wealth management

Tel: 020 8464 0493

Email: admin@devonshiregreen.uk

1-2 The Grange High Street, Westerham,
Kent TN16 1AH



DevonshireGreen
Accounting | Taxation | Wealth Management

www.devonshiregreen.uk



R. THORPE

— HEATING & PLUMBING LTD —

DOMESTIC & COMMERCIAL HEATING ENGINEERS & PLUMBERS

Boiler Breakdowns, Repairs and Servicing
(all Makes & Models)

Boiler Installations and Replacements
(Interest free finance available)

Pay Monthly Service and Repair Packages

Domestic and Commercial Central Heating Specialists

Underfloor Heating Installations and Servicing

Call Rob on 07597 048884 rob@rthorpeheating.co.uk
www.rthorpeheating.co.uk



Keeping IT Simple

*Solving all your technical support worries, calmly and patiently
in your own home, by someone who cares*

- > New Device Setup
- > Instruction & Tuition
- > Cleaning & Cooling
- > Virus & Malware Removal
- > Hardware Upgrades
- > Remote Support
- > Small Business Support
- > WiFi Routers & Networking
- > Cloud Storage
- > Data Backup
- > Data Recovery
- > E-mail Support
- > PCs & Laptops
- > Printers
- > Smartphones
- > Tablets
- > Televisions
- > Wireless Security Cameras



07375 416 176

dan@kisit.co.uk





Pop in for tea and a chat to discuss
your farewell tributes.

Lesley will be
more than happy
to help with your
requirements.

01959-570059

07867 993855

Tatsfield Blooms - Farewell tributes
by Lesley



NEW LIFE CHURCH
BIGGIN HILL

A CHURCH FOR THE WHOLE COMMUNITY

A local church with an international vision

EVERY SUNDAY 10am

Join us for worship
and Bible teaching
with youth and kids
meetings

DURING THE WEEK

- **Connect** Every Monday from 2-4pm
- **Stay & Play** Term time Fridays 10:30am-12pm
- **Youth** Term time Fridays 7:30-9pm
- **Dance fit** Friday 5-6pm
- **Board games cafe** First Saturday of the month 3-7pm
- **Together peace of mind** every second Saturday of the month 10:30am - 12 noon

SCAN ME



FIND OUT MORE

Try Church



www.newlifebh.org.uk
01959 571 667

Part of
Regions Beyond

f www.facebook.com/newlifebh

newlifebigginhill @newlifechurchbigginhill352



DAVID RUDD & SON PLUMBING AND HEATING LTD

- Full central heating systems and boiler exchanges carried out for GAS, LPG and Oil (Kerosene)
- Installers of Worcester, Valliant and Glow Worm boilers with up to **12-year** guarantee
- Kamco Power Flushing
- All types of Plumbing, Heating and Drainage
- Landlord / Homeowners Gas Certificates
- Installation and maintenance of Ground Source Pumps, Solar,
- Under Floor Heating, Cookers and Gas Fires
- Boiler breakdown – Diagnostics and Repairs
- Installation and servicing of Unvented Hot Water Systems
- Full bathroom design and installations

Fast, Friendly, Reliable Service

WRAS Approved Institute of Plumbing
ACIPHE RP



Tel: 01959 577072

Mob: 07831 641664

07957 940905

davidruddandson@hotmail.com



EST. 1881

•W•UDEN & SONS•

FAMILY FUNERAL
DIRECTORS

BIGGIN HILL

186 Main Road, TN16 3BB

01959 573130

24 HOUR SERVICE, 7 DAYS A WEEK

Please compare our **Prices**, our **Service** and our
Vehicles

Private Chapels of Rest

Prepaid Funerals

CONTINUING TO BUILD ON THE FAMILY TRADITIONS OF PERSONAL
AND CARING SERVICE LOCALLY FOR OVER
140 YEARS

Branches also at Petts Wood, Sidcup, Eltham,
Bexleyheath, Dulwich and Camberwell



Mobile Hairdresser & Gel Nail Manicures

Based in Tatsfield

30 Years Experience

Kate

tel: 01959 573816

mobile: 07970 012194

Fully Insured

GELUX
PROFESSE



LOCAL PAINTER & DECORATOR
FRIENDLY AND PROFESSIONAL
20 YEARS EXPERIENCE
FREE NO OBLIGATION QUOTES

CALL: 07834 468 835
INSTAGRAM: HLHPAINTING



BEAUTY BY
Sarah St John
TATSFIELD



Permanent eyebrow makeup

Temple Spa glow up facials

Length, volume, and lift lashes

Nail designs shellac & polishes

Manicures & pedicures

Waxing & tinting

Please contact me for a **FREE** consultation
Sarah St John: **07946 343 067**

25 Years experience - Fully qualified & insured

Mobile Chiropodist

Chiropody undertaken in the
comfort of your own home



Mandy Gifford

M.Inst.Ch.P., H.P.C. registered

Registered Member of the
Institute of Chiropody
and Podiatry

Tel: 01959 540715

Mob: 07944 763045

ALEX JONES FUNERAL DIRECTORS

Serving the community since 1996

- OFFERING A CARING AND PERSONAL SERVICE
- BEAUTIFUL CHAPELS OF REST
- HOME VISITS AVAILABLE
- MEMORIAL MASONRY
- PRE-PAID FUNERAL PLANS FROM GOLDEN CHARTER
- AN INDEPENDENT FAMILY OWNED BUSINESS



LINGFIELD
1 East Grinstead Road
Surrey
RH7 6EP
Tel: 01342 832 534

OXTED
92 Station Road East
Surrey
RH8 0QA
Tel: 01883 730 383

FOREST ROW
1 Ashdown Court
Lewes Road, East Sussex
RH18 5EZ
Tel: 01342 822 399

EDENBRIDGE
70 High Street
Kent
TN8 5AS
Tel: 01732 860 047

GOLDEN CHARTER
FUNERAL PLANS

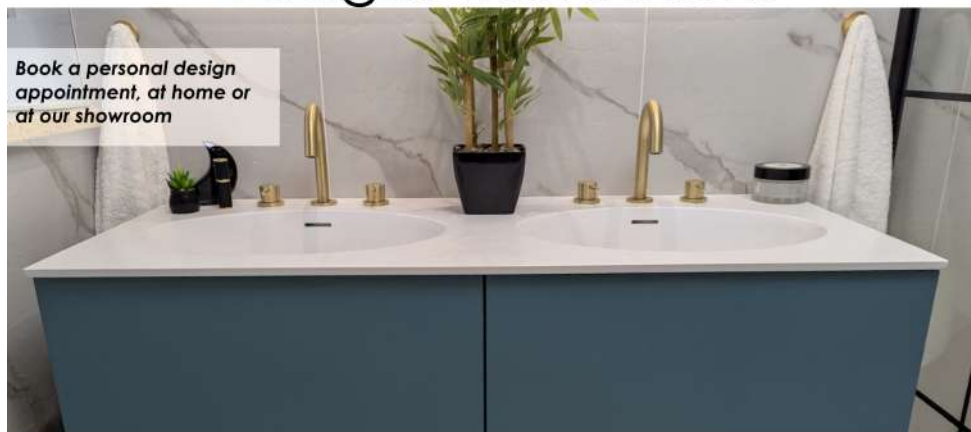


Alex Jones Funeral Directors Limited is an appointed representative of Golden Charter Limited trading as Golden Charter Funeral Plans which is authorised and regulated by the Financial Conduct Authority (FRN:965279).

GC-LEFT 2836 - 1023

Badger Bathrooms

*Book a personal design
appointment, at home or
at our showroom*



Your local, family owned, independent bathroom specialist for over 41 years!

SHOWROOM: Betsom's Farm, Pilgrims Way, Westerham TN16 2DS

www.badgerbathrooms.com 01732 464450



Good Movers

Removals & Clearances

- Removals
- Boxes & Packing
- Storage
- Clearances
- Courier Delivery
- Cleaning
- Probate Service Arranged
- Light Demolition
- Cash Paid for Unwanted Goods

The best way, the only way, the Good way!

0800 024 6183 / 07522 795594
www.goodmovers.co.uk / info@goodmovers.co.uk

ADVERTISE HERE!

REACH OVER 800 TATSFIELD HOUSEHOLDS

Tatsfieldmag@gmail.com
07468 589379



MUSSELWHITE

BUILDING, PLUMBING & HEATING



Est. 1979 | Family Run | Professional | Reliable | Honest Workmanship

Call or WhatsApp:

07887 517361

musselwhite.builders@gmail.com

Plumbing & Heating
 Extensions
 Landscaping & Fencing
 Bathroom & Kitchen Installations
 Roofing
 Refurbishments
 Disability Access
 Glazing
 Carpentry
 Pipework
 Underfloor heating
 Maintenance and Repairs
 Brickwork
 Rendering & Plastering
 Electrical Works

Cheekatrade
 Approved member



CIPHE
 Construction Industry Planning and Housing Expertise



WORCESTER
 Building Group



Tatsfield | Westerham | Biggin Hill | Oxted | Godstone | Orpington | Bromley | Sevenoaks | Tunbridge Wells | Tonbridge | Four Elms



GREENWOOD HORTICULTURE

- Grounds maintenance
- Pressure washing
- Grass cutting
- Garden clearance
- Hedge trimming
- Stump removal
- Tree pruning and removal
- Weed control

Contact
07944224812
Greenwoodhorticulture@gmail.com

Checkatrade.com
where reputation matters

THE WASP GUYS

Wasp Nest Removal

07761 232470

Local
Friendly
Trustworthy
Service



Fully Insured
100%
Guaranteed
7 days a week

See our Checkatrade customer reviews at
<https://www.checkatrade.com/trades/thewaspguys>
www.waspnestsdestroyed.com

Discover the joy of dance



Twirl your tutu

All dance styles. All ages.

07850 746189/ 07584 064643
www.judithessexschoolofdance.co.uk






Care Before Profit

David Gresham House Care Home



*Oxted's local award-winning care charity,
improving the lives of older people*

- **Your care, your way**
- **Friendly and vibrant home from home**
- **Respite stays available**



*Celebrating 40 years of care in the
local community*

We're here to help 7 days a week

Scan our QR code, to see more of our beautiful
home or call us on **01252 979111**
for a chat about your care needs



www.awvs.org.uk

email: marketing@awvs.org.uk

Tatsfield
Aquatics

Proud members of
Checkatrade.com
Where reputation matters

Pond Maintenance And Landscaping

- Pond Maintenance
- Pond Design & Construction
- Pond Renovation
- Lake Management
- Garden Makeovers
- Fencing, Paving, Turfing

01959 571 828

ian@tatsfieldaquaticsandlandscaping.co.uk



MINI CABS

AIRPORT CARS BIGGIN HILL
YOUR LOCAL
LICENSED MINI CABS

01959 540550

Ibbett Mosely

A name you can trust.

Independent Estate Agents - Selling Homes since 1900



PROFESSIONAL SERVICES

Residential Estate Agency • Residential Lettings
Property Management • Commercial Agency
Valuations • Building Design and Layout
Building Surveying • Town Planning and Development
Auctions - Furniture, Effects, Antiques and Fine Art

28 Market Square, Westerham, Kent, TN16 1FR
01959 563265
westerham@ibbettmosely.co.uk
www.ibbettmosely.co.uk

Offices at
Westerham • Sevenoaks • Otford • Tonbridge • Borough Green • West Malling • London

Sunningvale Service Station

Sunningvale Avenue, Biggin Hill TN16 3TL

01959 573434

We offer a warm welcome and friendly service
whatever your motoring needs



Petrol/Diesel	MOT
Catalysts	Bodywork Repairs
Diesels	Spraying
Exhausts	Insurance Estimates

BUILDING FOR OVER 50 YEARS

New Builds | Renovations | Extensions

**CONTACT Information**

☎ 01959 577586

✉ info@lingandsons.co.uk



www.lingandsons.co.uk

MR Computing

38 years of combined experience in IT

**Local, Professional and Family Owned
business since 2005**

NO FIX NO FEE & NO CALL OUT CHARGE

- Punctual visits at an agreed time or collection & drop off service.
- Apple & Windows computer & tablet/phone support for Business & Home.
- Reliable wireless range improvement for Home & Business.
- Most work carried out in a one hour visit. Fixed price workshop repairs.
- Repairs, speedup and maintenance, Data transfer/recovery, Computer malware/virus removal.
- New computers supplied/set up and made to feel familiar.



&



Windows

**Call Mark
& Sue on:**

01883 730345

or

0800 6129534

Email:

office@mrcomputing.net



Website - www.mrcomputing.net
Reviews - mrcomputing.net/reviews