

MAY 2026

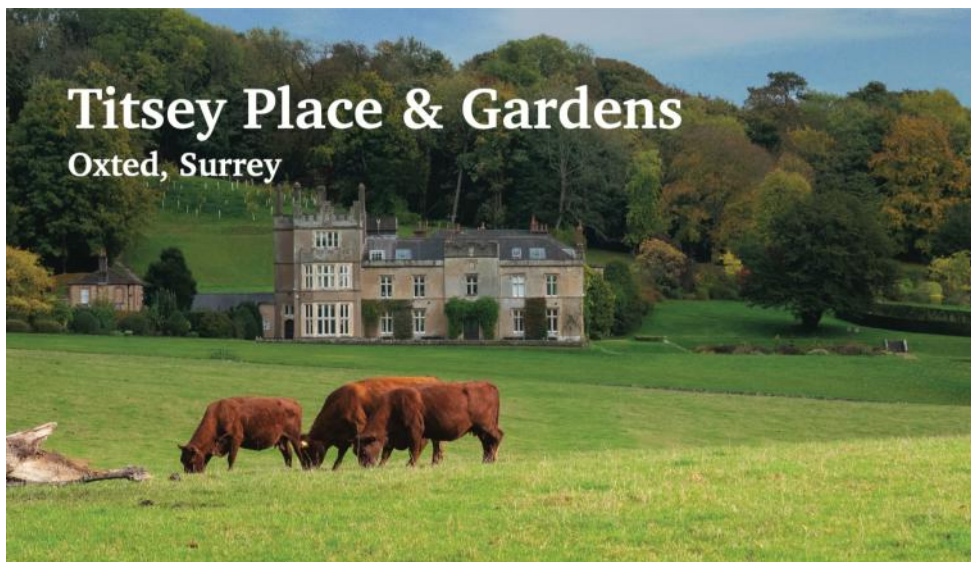
Tatsfield Parish Magazine

www.tatsfield.org.uk

£2 One copy FREE to each household

Titsey Place & Gardens

Oxted, Surrey



Come and spend an exciting day exploring our historic manor house and beautiful gardens

Titsey Place, with its stunning garden, lakes, woodland walks, walled kitchen garden and park offering panoramic views, enchants visitors. Enjoy the fine family portraits, furniture, a beautiful collection of porcelain and a marvellous set of four Canaletto pictures of Venice. After touring the house and strolling through the gardens, visitors can enjoy delicious refreshments in our tea rooms.

Open Season: 16 May to 30 Sept 2026

Opening Days: Wed & Sat - All facilities

Sun - Garden & tea room only

Bank Holidays: Open 25 May & 31 Aug 2026

NGS Days: Open 31 May, 28 June, 26 July,
30 Aug 2026

Opening Times: 1pm to 5pm

House Tours: 1.30, 2.30, 3.30pm

Woodland Walks: Open all year round

Info Line: 07889 052461 www.titsey.org



Sheree's Store & Tearoom



Specialty Teas & Coffees

Delicious cakes

Confectionary

Handmade cards

Locally made arts & crafts

Wide range of products

Locally sourced & Fairtrade

Newspapers

PayPoint

Artisan Breads, Pastries, Fresh Fruit and Vegetables Every Saturday

Craft workshops held in house. See our Facebook page for details

Call us on: 01959 928181

Or join us on Facebook

at: 'Sheree's Store and Tearoom'

2 The Parade

Westmore Green

Tatsfield, TN16 2AS



TATSFIELD



Garage Ltd

01959 577347



MOT - Servicing - Repairs on all makes of vehicle.

- Tyres • Batteries • Brakes • Suspension
- Air Con • Clutches • Diagnostics • Welding

Please call Simon or just pop in.

Established since 2014

5-7 Paynesfield Road • Tatsfield • TN16 2AT • tatsfieldgarage@gmail.com



**bands
&
events**

Pool, snooker
& darts
Bingo, quizzes
& sports



Your friendly
local
social

**Mon - Thu ~ 3pm - 11pm
Fri - Sat ~ 12pm - late
Sun ~ 12pm - 11pm**



Tatsfield Village Club
New members welcome

email: tvsecretary@btconnect.com or pop in and see us



tvsecretary@btconnect.com
or pop in and see us

Tuition

Lady teacher/tutor with 30 years experience offers
one to one tuition.

Coaching to improve confidence and competence.
Proven results

References available

- 7-11 years Key Stage 2 Numeracy and Literacy
- Entrance Exam Practice
- 11+ Practice
- SATs Practice
- Year 7 Booster English



Mob: 0777 351 7063

Limpsfield, Oxted, Tatsfield and Westerham area

**DEIGE'S
HELPING HANDS**



**Home Care Provider
Personal Domiciliary Care**

Affordable and flexible care delivered to your own home.
We have provided care for the elderly for over ten years
Professional, consistent & reliable service
Flexibility - we will work with you to tailor a suitable care plan
that meets your requirements

Personal Care	Social Care Trips
Companionship	Shopping & Laundry
Meal Preparation	Dementia Care
Well being checks	Care Giver Respite

Contact Deige



☎ 07981182773

JAYCY

Painting, Decorating

Free estimates

Nick Walsh

01959 577684

Mobile
07887528264

A25 Taxis

Your reliable Tatsfield taxi
Service for all occasions

Airport transfers
Taxi hire
Occasion/Wedding hire
Corporate hire
School run service (DBS checked)

📞 01959 575957

✉️ A25taxis@live.co.uk

Opera Night Shampan Westerham

In Aid of
The Chartwell Children's Cancer Trust

Tuesday 19th May 2026, 6:45pm

Join us for an enchanting evening of fine dining,
opera music and charity

Tickets £55 per person



MANAK
SOLICITORS

SHAMPAN
WELLING - BROMLEY - WESTERHAM



W. chartwellcancertrust.co.uk | T. 01959 570322 | E. info@chartwellcancertrust.co.uk



Based in Tatsfield
01959 577718
07946 304087

acaciatreesurgeons@gmail.com

We provide a wide range of tree services:

- Complete Tree and Stump Removal
 - Thinning and Pruning
 - Crown Reduction
 - Lifting and Reducing
 - Site Clearance
- 24 Hour Emergency Call Out
 - Chippings Delivered
 - All fencing undertaken

**NPTC QUALIFIED
& CHAS REGISTERED**

Call us today for a free estimate

Celebrating over 80 years of professional tree care

BIGGIN HILL PLASTERING



**NO JOB TOO
SMALL FREE
ESTIMATES**

07710622237

or

01959540615



- Community physiotherapy for older people -

Jennifer Willis

BSc (Hons) Physiotherapy MCSP, HCPC

Fallen recently? Suffer with pain?

Balance and mobility not as good as they used to be? Lost confidence when moving around?

Suffer from a Stroke, Dementia, PD, MS, frailty?

Feel weaker or fatigued after an episode of COVID-19

..then East Surrey Physio can help

Jennifer will visit you in your own home, residential home, or nursing home for your physiotherapy sessions.



07939 461 416

✉ jenniferwillisphysio@yahoo.com

🌐 www.eastsurreyphysio.com



Warlingham - Oxted - Tatsfield - Caterham - Woldingham



Westerham Heights Garden Centre

What We Offer:

- A wide range of plants, shrubs, and trees
- Seasonal flowers to brighten your space
- Expert advice from friendly, local gardeners
- Quality tools, seeds, and soil
- Logs and calor gas
- Fencing

Gift & Homeware Shop

Looking for something unique? Step inside our homeware shop to discover:

- gifts for every occasion
- Stylish decor and one-of-a-kind treasures
- Locally made and handcrafted items
- Frenchie paint

01959 571545

westerham.heights@yahoo.com

Main Road, Westerham Hill,
TN16 2HW

Your One-Stop Shop for Garden Gifts,
and Good Vibes



6 Westmore Road
Tatsfield
TN16 2AX



Gift Certificates
available
for all therapies

Alex Davies
Muscle Therapist
07967 864235
alxdavies@hotmail.com



Lorraine Maddison
McTimoney Chiropractor
07817 548133
rainymad@icloud.com

Other therapies available including reflexology

www.sourcehealthclinic.co.uk



Pre School for children 2+

Tatsfield Village Hall

Funding available for 3 & 4 year olds
and some 2 year olds

Monday to Thursday

New opening times
8:30am ~ 3:20pm

Friday

8:30am ~ 1:00pm

Morning, afternoon and whole day sessions
available

~Clubs included in some sessions ~
Science Club, Boom Arts Academy, Gardening Club & Messy Club

Phone : 01959 540775

Email: office@littleacornstatsfield.co.uk
www.littleacornstatsfield.co.uk

Charity number: 1024480



ARE YOUR LOCKS BEHAVING BADLY?

A Local Trusted Family Business Since 1989
We Value Old Fashioned Customer Service

Christopher
THE LOCKSMITH

 Specialist in UPVC & Wooden Doors

 No Call Out Charge  All Work Fully Guaranteed

 No Fix No Fee  10% Senior Citizen Discount



For More Advice & Help
Call Christopher:

07772 111 222

www.christopherthelocksmith.co.uk



IQ Wealth Management



INVESTMENTS



PROTECTION



PENSIONS

As a financial advice firm, we provide advice on a wide range of financial matters. From investment advice to retirement planning and managing your estate, we ensure as much as possible goes to the people you want to benefit from your hard work. Our initial 45 minute meeting is free, either at our offices in Tatsfield or your home.

01959 571300

IQ Wealth Management, Aileen McHugo Building, Westmore Green, Tatsfield TN16 2AG

Approver Quilter Financial Limited 15/02/2024

SHUTTERS

HARDWOOD - VINYL - FAUXWOOD
63mm or 76mm or 89mm Louvres
Clear View, Centre or Offset Tiltrods
Numerous colour options



BLINDS



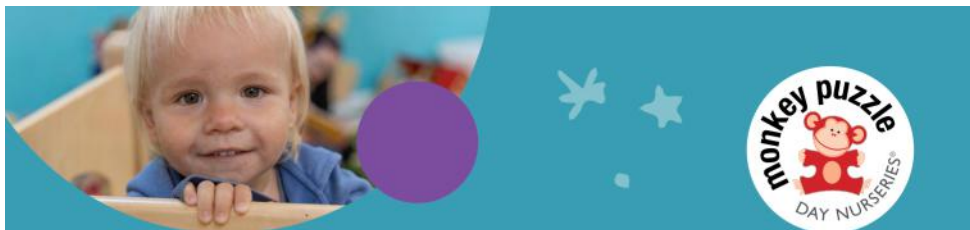
Verticals | Rollers | Venetians | Romans | Curtains | Pleated

FREE Professional design advice on all of our products
Appointments in the comfort of your own home - at times that suit YOU

For SHUTTER Quotes
Please Email:
info@benasa.net

BENASA
The difference is in the detail

To discuss your requirements for BLINDS
Please Call:
01959 509 179




The right choice for your child

We believe that every child is made to live an extra ordinary childhood, that they can accomplish anything, with the right teacher and environment. With over 100 years teaching experience, Monkey Puzzle Tatsfield is more than just an education, it is an environment where life skills, good manners, caring for each other and bonds are made for life.

Monkey Puzzle Day Nursery Tatsfield
Old School, Church Hill, Tatsfield, Surrey TN16 1JX

Call 01959 928 427

www.monkeypuzzletatsfield.co.uk

  @monkeypuzzletatsfield



CLASSES AT TATSFIELD *every* **FRIDAY**
AWARD-WINNING PERFORMING ARTS SCHOOL

WE'RE THE ONLY SCHOOL IN SOUTH LONDON OFFERING STREET DANCE, BREAK DANCE & FREESTYLE EXAMS WITH THE IMPERIAL SOCIETY OF TEACHERS OF DANCING (ISTD) – WITH A 100% PASS RATE AND 100% HONOURS.

Tots Boom Street dance: 4.15–4.45pm
Tots/LJ Boom Musical Theatre: 4.45–5.15pm
Lower Junior Street dance 5.15–6.00pm
Boom Theatre & Singing 6.00–6.45pm
Junior/ UJ Boom Street dance 6.45–7.30pm

SATURDAY AND OTHER WEEKDAY CLASSES AVAILABLE AT SANDERSTEAD, SHIRLEY AND KENLEY

BOOK NOW: WWW.BOOMARTSACADEMY.COM



Scan me to book a class!



Hazelwood School

www.hazelwoodschool.co.uk
01883 733841



Dare to
IMAGINE



Dare to break down the conventions of the everyday
and *discover* something new.

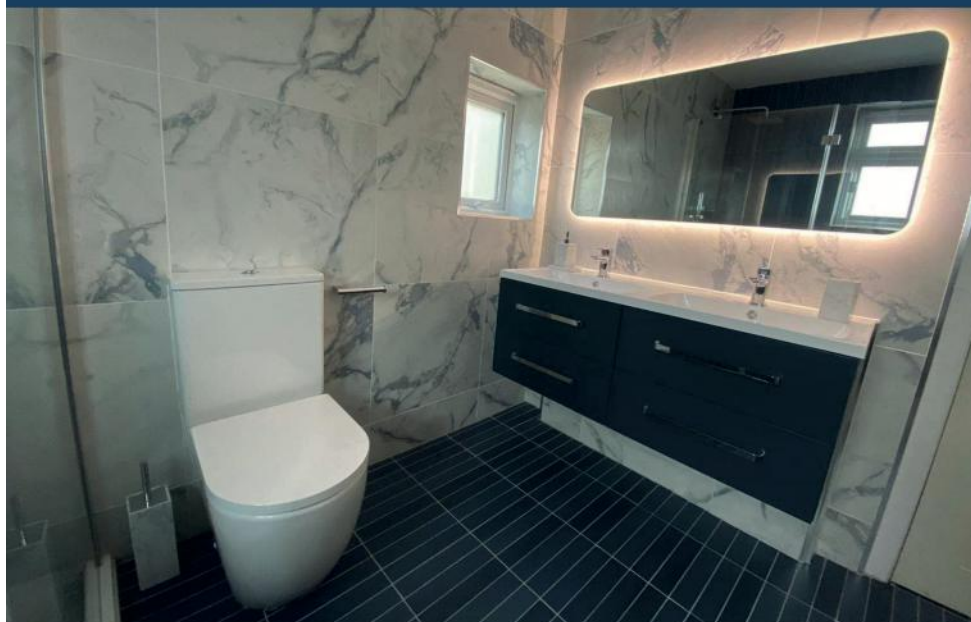
Discover Hazelwood, an exceptional prep school for children aged 9 months to 13 years, nestled in 25 acres of Surrey woodlands, offering one-of-a-kind learning opportunities, state-of-the-art facilities, and boundless possibilities.

Discover more by booking a tour today.
Admissions@hazelwoodschool.com

   @HazelwoodSchool



LILLEY'S BATHROOMS



Start Your Dream Bathroom Today

At Lilley's bathrooms we pride ourselves in providing our customers with a professional service and high levels of expertise with many years design experience. We use quality products from leading, reputable manufacturers. Showcasing a variety of styles, our showrooms provide an abundance of bathroom inspirations, with realistic working bathroom displays.

A free Design Service | Free Measure Up | Free Local Delivery

The use of 4D software Virtual Worlds, where you can "step in" to your space that has been created before the work begins

The Studio

66-70 Footscray Road, Eltham, London SE9 2SU

0208 8507179

The Gallery

157 Main Road, Biggin Hill, Kent TN16 3JR

01959 572000



lilleysbathrooms.co.uk

Tatsfield Aquatics & Reptiles

Tatsfield Aquatics Ltd
Approach Road
Tatsfield
TN16 2JT
01959 571828

Info@tatsfieldaquaticsandreptiles.co.uk
www.tatsfieldaquatics.com

Retail - Landscaping - Maintenance



RST Glass and Glazing Ltd

14 Rosehill Road, Biggin Hill, Kent TN16 3NF

01959 571200

✉ **info@rstglassandglazing.co.uk**

Windows, door & conservatories
Double glazed units
Misted and broken units
Handles, hinges and locks replaced
Glass table tops cut and polished
Patio door wheels/runners
Trade counter
Burglary damage repairs
All insurance work
Contract Glazing



FENSA

APPROVED
WINDOW & DOOR INSTALLER



YOUR SPACE | SPOTLESS | ALWAYS

CLEANING SERVICES

Our local house cleaning team will ensure your home is always in immaculate condition, ready for you to relax and enjoy.

Call to book your regular weekly, fortnightly or monthly clean



07517 175 872



Video Evolution
VIDEO LED MARKETING

Call Now on 01959 447525

YOUR LOCAL VIDEO PRODUCTION COMPANY

VIDEO

PHOTO

DRONE



SPECIALISTS IN BUSINESS OVERVIEW VIDEOS, PRODUCT RELEASE, SERVICES EXPLANATION & VIDEO TESTIMONIALS

Discover how we can help your ideal, local clients, find you online when they need your service

CONTACT ANDY ON: 01959 447525 | andy@videoevolution.co.uk



Tatsfield Martial Arts

JUDO, JU JITSU & COMBAT FITNESS

Head Coach: Adam Plinston

Judo 6th Dan / Ju Jitsu 4th Dan. UKCC Level 2 Coach

Club coaches are first aid trained, DBS checked and insured via NGBs
Children and adult classes, from age 4+ on Wednesdays, Thursdays,
Fridays & Saturdays

Gain confidence. Learn self-defence. Have fun getting fit!

www.tatsfieldmartialarts.com

07956 956095

tatsfieldmartialarts@gmail.com

Private Guitar and Bass Lessons Based in Tatsfield

Experienced tutor with 20+ years experience

Suitable for all ages and abilities

No instrument required, you can use ours!

Learn to play your favourite songs, learn theory or
work towards your grades



**20% OFF YOUR
FIRST LESSON
WHEN YOU
QUOTE 'TPM'**

Playing music relieves stress, boosts brain power and improves confidence!

Email: enquiries@mammothmusicacademy.com

Find us on Facebook & Instagram @MammothMusicAcademy

Mobile Hairdresser & Gel Nail Manicures

Based in Tatsfield

30 Years Experience

Kate

tel: 01959 573816

mobile: 07970 012194

Fully Insured

GELUX
PROFES



ADVERTISE HERE!

TO OVER 800
TATSFIELD HOUSEHOLDS
Tatsfieldmag@gmail.com



BEAUTY BY

Sarah St John

TATSFIELD

Permanent eyebrow makeup

Temple Spa glow up facials

Length, volume, and lift lashes

Nail designs shellac & polishes

Manicures & pedicures

Waxing & tinting

Please contact me for a FREE consultation

Sarah St John: **07946 343 067**

25 Years experience - Fully qualified & insured

Mobile Chiropodist

Chiropody undertaken in the
comfort of your own home



Mandy Gifford

M.Inst.Ch.P, H.P.C. registered

Registered Member of the
Institute of Chiropody
and Podiatry

Mob: 07944 763045



FITNESS CLASSES FOR EVERYONE



This is a 60 minute class which has been described as the strength & conditioning of ballet, and can be distinguished from other group fitness activities by the use of a ballet barre and its incorporation of movements derived by ballet.

CLASSES:

£12 PAYG or
£40 per month

Barre with Fi

Tuesday's: 6.15pm - 7.15pm

Thursday's: 6.15pm - 7.15pm

Tatsfield Village Hall
Westmore Green,
Tatsfield, TN16 2AG

For more information:
check out our website www.wellnesswithfi.co.uk
call me 07801 556 069

Produced for the Village by the Parish Magazine Committee under the authority of Tatsfield Church.

Editors • Tara Barry and Tracey Syrett

Chair • Debra Elsdon

Treasurer • Madie Langford (577114) **Distribution Managers** • Jim and Ruth Yeeles (577489)

Advertising Manager • Sarah Tait **Production** • Ruth Yeeles

CHURCH CONTACTS

St Mary's Church Office (Thurs 9.30-13.30)

Admin: Steve Tatler, The Parish Office, High Street, Limpsfield RH8 0DG.

Phone 01883 712512 / email stmoffice.lttm@btinternet.com.

Team Rector: Revd Helen Cook email: hjwcook@yahoo.co.uk

Curate: Debra Elsdon email: curate.lttm@gmail.com

Wardens: Marjory Broughton (01959 541059) / Chris Hancock (01959 577622)

St. Mary's Church Hall Bookings • Sheila Cook (577443)

COUNCIL CONTACTS

Parish Council: Clerk • Aileen McHugo Building, Westmore Green, Tatsfield TN16 2AG
clerk@tatsfieldpc.org.uk (07483 337461)

Chair • Kim Jennings email: kimjennings@tatsfieldpc.org.uk (577328)

Website • www.tatsfieldpc.org.uk

Tandridge District Councillor • Martin Allen, 38 Paynesfield Rd, Tatsfield TN16 2BG (577201)

Surrey County Councillor • Vacancy

OTHER CONTACTS

Village Hall Bookings Secretary • Helena Garcia-Mcleod (bookings@tatsfieldvillagehall.org.uk)

W.I. Hall Bookings • Pat Walsh (01959577684)

Parish Room Bookings • (07483 337461) email clerk@tatsfieldparishcouncil.org.uk

Tatsfield Primary School Head • Rachel Jewitt (577356)

Tatsfield Village Club • (577330)

Furze Corner Bookings • 07483 337461 clerk@tatsfieldparishcouncil.org.uk

Doctors • Stock Hill Surgery (580011) • Westerham Surgery (564949) • Oxted Medical Centre (01883 734000)

Village Website: www.tatsfield.org.uk

MAGAZINE CONTRIBUTIONS

We welcome contributions from village organisations and individual residents but reserve all editorial rights. We welcome letters commenting on items in previous issues or on anything else. Anonymous submissions will not be accepted. Organisations must include contact details in their submission, which will be published. Copy date for the Magazine is normally 16th of the preceding month, except for July/Aug and Jan/Feb double issues. Ideally contributions should be sent as a Word attachment by MIDDAY on the copy date in an email to: tatsfieldpm@gmail.com. Alternatively post to: Tatsfield Parish Magazine, 20 Shipfield Close, Tatsfield TN16 2AU.

Enquiries concerning advertising or loose inserts should be made to Sarah Tait (tatsfieldmag@gmail.com). All loose inserts need to be booked and approved at least ONE MONTH in advance of insertion.

Small Ads These are accepted only from Tatsfield or Titsey residents (No Trade) and are free of charge (Max 10 words plus phone number.) We will include them in the next issue space permitting.

Calendar Dates Our calendar usually covers six weeks or more from publication so please give us your dates in good time. If you don't want your event to clash with others why not check with us early?

Advertisements We take no responsibility for the goods and services advertised in the magazine.

Cover image: Tatsfield bluebells, Tara Barry.

EDITORIAL – WHICH WAY TO GO?



I am someone with little sense of direction and a choice of paths can be confusing – but in the end we all have to make a choice or remain just stuck there forever at the crossroads.

We have some elections coming up soon and with the headlines shouting at us 24/7 from all over the world, the application of

a cross in a box seems a very little thing, doesn't it? And yet, we need to understand that these little things really matter.

The Bible tells us that we are all part of a body, a community – we have different roles and abilities, but we can't do without each other. ***As unlikely as it might seem, when we vote we are fulfilling an act of neighbourly love; we are maintaining a healthy body in which we all have a part to play.***

With that little cross we decide who will oversee the road safety, and the care of the vulnerable among us. Through our vote we make it know what is important to us – whether that's the preservation of our hedgerows or support for our local school, the bus service, the maintenance of our green spaces, and the planning permissions that shape the character of our streets. And repair of potholes! Whatever your choice - your ballot is a prayer of hope for the future.

Whatever our concerns - road safety, local business support, youth facilities - our ballot is our strongest tool for influence.

Hope to see you at the Polling Station! **Blessings, Reverend Debra**



FAIRTRADE TEA TENT AND SHOPPING, SATURDAY 9TH MAY

On Saturday 9th May at 9.30am our Fairtrade Tea Tent will be outside Sheree's alongside the Horticultural plant sale, please come and support us... We will have fair trade products for sale. Sheree always stocks fair trade products such as tea, coffee and chocolate.



When you are doing your bigger shops always look out for fairtrade products. Local to Tatsfield there is Co-op, Sainsbury's, Waitrose, Lidl, Tesco, Morrisons, Asda, and M&S.

Tatsfield Fairtrade Committee

tatsfieldfairtradegroup@gmail.com tatsfieldfairtradevillage.weebly.com

TATSFIELD PARISH COUNCIL

Since the last Parish Magazine we have not had a meeting before this article goes to print so we have little to report.

Parish Council AGM It was lovely to see so many parishioners at the Parish council AGM on 23rd March, and we would like to thank everyone for their contribution to the meeting. We would like to give special thanks to Richard Biggs, Claire Countinho's Constituency Manager, who enlightened us to the progress of the new Unitary Government System and Martin Allen for his update report.

Westmore Green It was disappointing to see the damage to one of our much-appreciated bronze statues, the matter is still under investigation with the police.

Thank you to everyone who has contributed towards the playground project and we will be holding events to raise more funds but if you have not contributed and would like to **our go fund me page is <https://gofund.me/238e43d2e>**

Easter Event The Easter Egg Hunt was again a huge success, and it was lovely to see so many children have fun despite the cold weather. Easter Bunny managed to hop back to Tatsfield to congratulate all those that were able to complete the Egg Hunt and present them with a delicious egg. Thanks also go to Curate Debra Elsdon and her team for providing everyone with delicious hot cross buns.

MUGA (Multi Use Games Area) refurbishment We are nearing the end of this project and are aiming to hold an Open Day on 17th May. Everyone is invited to come along and try a new sport or just come along and have a look. We will be doing a programme of events so please do read the village noticeboards.

Our next meeting is on at **8pm on 18th May in the Aileen McHugo Building.**

Full minutes of all our meetings can be found on our website.

Kim Jennings, Chairman Tatsfield Parish Council

Email: kimjennings@tatsfieldpc.org.uk Tel 07951072326

TANDRIDGE DISTRICT COUNCIL

As you can imagine the focus around the Council and the other councils within Surrey, as well as trying to run "business as usual" is to organise the transition to an East Surrey Council through the Local Government Reorganisation. Having just recently read some old paperwork, where it states that "new unitary structures must support devolution arrangements" the council has become a signatory along with most of the other councils to the Expression of Interest to become a Mayoral Authority. I am of the view that it is better to be in the process that be left outside of it.

It is acknowledged that we have concerns about the amount of detail currently available, the cost and what Government support will be available. Hopefully this will all be clarified

soon but, if not, we note there is an option to withdraw at the next stage. As this progresses either I, your newly voted County Councillor or the newly appointed Unitary Councillor will keep you all updated.

The East Surrey Council Joint Committee met on 13th March and 15th April. The committee is helping plan the transition to the new East Surrey Council and making sure the change is smooth for residents and staff. You can view meetings on the council website.

As well as the above the council also has to deal with the upcoming elections to East Surrey Council and the seat for the Warlingham division. You will have been receiving candidates' literature or a knock on the door and, if submitted to this magazine, you can see a small biography of the candidates and their achievements in their own wards and promises what they will do for the good of the villages.

You can see a whole list of the candidates standing on the TDC website, along with information regarding the future of Surrey. I will continue to work with the people that are elected for the remainder of my time in office, but firstly I will need you to vote.

So importantly, please vote....

Postal voters Remember to return your postal vote by 10pm on Thursday 7th May. If you forget to post it, you can hand in your postal vote and up to five other postal votes at your polling station between 7am-10pm on Thursday 7th May. If you hand in any postal votes, you must complete an additional form available from council officers, or polling station staff. This is to avoid the postal vote being rejected.

In person voters You can vote in person, **with photo ID** at your polling station from 7am-10pm on Thursday 7th May. Tatsfield's main polling station is in the Village Hall.

Under business as usual my Independent group councillors and I will continue to work with the council(s) on planning issues, enforcement issues, housing issues, abuse of yellow lines, reporting potholes and blocked drains, and litter picking and road sweeping. For my part I will work with the new Warlingham ward member to get the area in the village centre re-laid as it is now an eyesore an embarrassment and is certainly taking years off the life of the vehicles banging up and down on the poor road surface.

You will be pleased to know that the council has been awarded full costs against an applicant, following their "unreasonable behaviour" in withdrawing from the process part way through a planning appeal inquiry without offering any reason for doing so. Costs which could amount to a six-figure sum are being claimed against all of the costs incurred by the council in defending their original decision. This is a good sign for the green belt across the district, which the council are determined to defend against unscrupulous applications and assures the residents that the decisions made are sound and can be defended.

Check what you can put in your recycling bin on the Council's website Last week there was another vehicle fire in the Godstone depot caused by a battery placed in a recycling

bin. **Lithium-ion batteries, loose batteries and e-scooter batteries and vapes and electrical items can cause fires so never put them in your bins, instead bag them and put them beside your food caddy.** Use a tied carrier bag for electricals and sandwich bags for batteries and vapes.

For large and bulky items, the bulky waste service can help, the service can collect sofas, mattresses, washing machines and more. So, no need to dump them in the countryside. You don't need to be at home just leave them at the edge of your property by 7am on the day of the booked collection. Prices start from £50 with subsidised rates available.

Biggin Hill Airport Having met with the CEO of Biggin Hill airport recently I have arranged that we will issue a further routing map, showing the success we have had in moving the airport traffic south and I am advised that trials currently being undertaken are proving a success to our moving the NSA further south. More information later in the year.

If you think I can help you with anything to do with the Tandridge District Council or anything else please do not hesitate to contact me.

Cllr Martin Allen Tel: 01959 577201

Email: cldr.martin.allen@tandridge.gov.uk or martin_allen@talk21.com

CLAIRE COUTINHO MP

After my recent invitation in this column welcoming constituents and community groups to visit the Houses of Parliament, my mailbag has been overflowing with letters and emails from across East Surrey. With the mesmerising intricacies of the architecture and centuries of British history enveloping every room, it was a wonderful joy to welcome the farmers who made the trek to London. They all had plenty to say about the MPs who work here – but to be courteous to this magazine's editorial guidelines, I'll leave those words to your imagination!

I also had some cracking days out knocking on doors and chatting to residents ahead of the local elections on the 7th May. I was in Smallfield, where unauthorised traveller developments and noxious fires were top of people's minds. I'm pleased to say that after five months of determined badgering, the Housing and Planning Minister has finally agreed to meet with me. Fingers crossed the Government begins to recognise the impact this lawlessness is having on rural communities across the country, but most importantly here in East Surrey. If you have any questions you would like me to ask the Minister, please send them to me here: claire.coutinho.mp@parliament.uk.

Finally, a plea. I was contacted by Saturn V Rebound Therapy, who, after more than 30 years at their location in Caterham, are in desperate need of a new home for their much-loved disability activity centre. The magnificent team there use full-sized trampolines to improve mobility, coordination, confidence and overall wellbeing for people with complex needs. If you have any suggestions or ideas, please email me and I will ask my team to put you in touch with Rebound Therapy.

ELECTIONS 7TH MAY

On Thursday 7th May 2026, eligible voters across Tandridge District will vote for the following councillors:

1. **The new East Surrey Council (East Surrey Unitary Authority)**. Local government in Surrey is changing. All eleven district and borough councils and Surrey County Council are being replaced with two new unitary councils, East Surrey Council (ESC) and West Surrey Council. East Surrey Council includes Surrey County Council, Tandridge, Elmbridge, Epsom & Ewell, Mole Valley and Reigate & Banstead district or borough councils. Because of this there are no Tandridge District Council elections this year.

Each new council will run the full range of local government services. This includes education, recycling and rubbish, planning and building control, roads, housing, play areas, children's services and adult social care. Right now, these services in this area are provided by Surrey County Council and Tandridge District Council.

Councillors, wards and your vote:

- Councillors will be elected for a five-year term, ending in May 2031.
- East Surrey Council will have 72 councillors covering 36 wards.
- There will be two councillors elected for each of the six wards in the Tandridge District.
- **You can vote for up to two candidates in your ward. Warlingham Ward comprises East & West, Tatsfield & Titsey & Woldingham.**
- The two candidates with the most votes will be elected.

2. **By-election for Surrey County Council Warlingham Division**. This election is to fill the vacancy left by Cllr Becky Rush, and will be for a 1-year term until May 2027 when the Unitary councillors assume control. For this by-election, you vote for one candidate only.

Candidates standing have been invited to send their biographies to the Tatsfield Parish Magazine in advance of the election. Any that have been submitted are detailed below in alphabetical order.



RYAN BLOOMFIELD REFORM UK CANDIDATE FOR ELECTION OF COUNCILLORS TO EAST SURREY COUNCIL WARLINGHAM WARD

As a resident of Warlingham for the last seven years and working as a paralegal, I recognise the issues our local community faces and the passion with which they hold those views. I aim to reduce waste, preserve our green areas, reduce crime and mend broken foundations. Let's get your councillors working for you!



ROBIN BLOORE, CONSERVATIVE PARTY CANDIDATE FOR ELECTION OF COUNCILLORS TO EAST SURREY COUNCIL WARLINGHAM WARD, AND ELECTION OF COUNCILLOR TO SURREY COUNTY COUNCIL WARLINGHAM DIVISION

STRONG LOCAL LEADERSHIP FOR A CHANGING EAST SURREY As your local Conservative candidate, I am proud to ask for your support in the forthcoming Surrey County Council by-election and East Surrey Unitary Authority Council Election on May 7th, 2026, to represent Warlingham, Chelsham & Farleigh, Tatsfield, Woldingham and Titsey. My wife Denise and I have called Warlingham home since 1984, where we raised our two children and watched them grow, attending our excellent local schools.

After a successful career in retail management and the electricity supply industry, I am now retired and fully dedicated to serving our community. I am passionate about local life. Since 2016, I have served as a Warlingham Parish Councillor, contributing to the Remembrance Day Committee, Planning Committee, Green Improvement Project, and the much-valued Blanchman's Farm Local Nature Reserve.

Elected as a Tandridge District Councillor in 2018, I have worked across key committees including Community Services, Audit and Scrutiny, Planning, and Planning Policy. I currently serve on Full Council as Conservative Group Leader, advocating strongly for residents and local priorities.

My commitment to community life extends beyond council chambers. I am Chairman of the Warlingham Christmas Lights Committee and the 1st Warlingham Scout Group, Outings Secretary and former Chairman of the Warlingham & District Probus Club, and a proud supporter of Blanchman's Fair. I have also helped organise and celebrate memorable local 'one off' events such as the Queen's Platinum Jubilee, the Coronation of King Charles III, and our annual May Queen Crowning.

My Priorities are:

- **Protect Tatsfield, Woldingham, Titsey and Warlingham Chelsham & Farleigh's Green Belt through an effective Local Plan:** The new Local Plan is currently under development, and this must be an urgent priority for the new East Surrey Unitary Authority. Until the plan is confirmed and adopted there will be many unsuitable Planning Applications from developers who have no knowledge or interest in our communities.
- **Ensure any building that takes place is supported by appropriate infrastructure:** Too often there is insufficient consideration of doctor's surgeries, schools, carparks, and roads already at saturation point.
- **Build affordable homes in our communities for our children and essential workers:** An approved Local Plan provides up to 40% affordable housing on the designated sites, essential for future residents.
- **Ensure the effective management of our local highways:**



Over many years it seems that our part of Surrey has been abandoned by County Council Highways, meaning we do not receive the appropriate level of upkeep of our roads, and especially the swift repair of damage and potholes. I want to change that and ensure we are no longer neglected as the “far east” of the County.

- **Supporting the educational needs of all local children:** I want to ensure that all children receive effective and swift support for their education needs.
- **Supporting fiscal prudence:** As a newly created Local Authority, it is vital that we do not become saddled with the existing massive debts accrued by other Boroughs and Districts which are nothing to do with our residents. This is vital to keep all our essential services functioning effectively but keeping Council Tax as low as possible.

With a proven record of service and a genuine passion for local communities, I will work tirelessly to similarly support and champion residents across all areas of Woldingham, Tatsfield, Titsey and Chelsham & Farleigh, if elected.

(Promoted by Eithne Webster, on behalf of Robin Bloore, both of ESCA, 6 Godstone Road, Lingfield RH7 6B)



NATALIE BUTCHER REFORM UK CANDIDATE FOR ELECTION OF COUNCILLORS TO EAST SURREY COUNCIL WARLINGHAM WARD

My name is Natalie Butcher and as a local Tatsfield working mum, I know the pressures families & local businesses are under. Too often we are ignored by the bureaucratic system! I want to be your local representative who listens and delivers. Let’s save our green belt, fix potholes, improve infrastructure, support local businesses, tackle crime & get value for money!



PRAMODRAI CHOTAI (PERRY CHOTAI) LIBERAL DEMOCRAT CANDIDATE FOR ELECTION OF COUNCILLORS TO EAST SURREY COUNCIL WARLINGHAM WARD, AND ELECTION OF COUNCILLOR TO SURREY COUNTY COUNCIL WARLINGHAM DIVISION

Perry moved to Warlingham over 24 years ago, having spent over 20 years working in Switzerland for blue chip pharmaceutical companies. Perry has extensive business experience and particular expertise in change management. He has served as a Governor at Warlingham Village Primary School and as a District Councillor for Warlingham East, Chelsham and Farleigh since 2022, where he sits on the Planning and Strategy & Resources committees. He is also Vice Chair of Warlingham Parish Council, actively contributing to its activities including sitting on the Warlingham Green Improvement committee.

He is very keen to contribute his expertise to the new East Surrey Unitary Council, especially in financial management and improving accountability and efficiency. With

new proposals from central government which will affect Surrey, he believes his expertise and local knowledge will be very valuable in shaping strategies for Social Care.

He is also keen to continue to fight inappropriate planning developments which threaten the attractive character of our villages and countryside, protect and improve community facilities like Warlingham Library and the Bond Road Tip, and support local businesses in Warlingham, Woldingham and Tatsfield.

(Promoted by Simon Morrow on behalf of Perry Chotai)



MARTIN HALEY INDEPENDENT CANDIDATE FOR ELECTION OF COUNCILLOR TO SURREY COUNTY COUNCIL WARLINGHAM DIVISION

I have lived in Warlingham for 63 years and currently work part time as a delivery driver for the local pharmacy.

I am standing as I am totally fed up with the way the council wastes the council taxpayers' money.

One prime example of this is the fact that the Tory lead council recently sold off their Kingston HQ to developers for something like a tenth of the actual value.

There could be any number of reasons for this. One is of gross negligence. Why have they not been held to account for this? Why would you vote for more of this on 7th May?

I am sure you could think there may be other reasons.

If elected I would always use taxpayers' money with the respect it deserves.



JEREMY PURSEHOUSE INDEPENDENT CANDIDATE FOR ELECTION OF COUNCILLORS TO EAST SURREY COUNCIL WARLINGHAM WARD

I have served as a district councillor for Warlingham East (later with Chelsham & Farleigh) continuously since 1988 to the present day, with only a four-year gap between 2008 and 2012. For the past two terms I have stood as an independent, having become disillusioned with party politics in 2017.

This means I am a member of the Independent Group led by your current and long-standing district councillor Martin Allen. We are real independents, subject to no whips, guided only by what we believe is best for our wards.

I have the full and enthusiastic support of Martin Allen, who has decided not to stand, although he remains your district councillor for Tandridge's final year. To find out more about what that means, please take the time to read my newsletter and address, or see my Cllr Jeremy Pursehouse Facebook Page.

I have lived in the area for 43 years with my wife Wendy and my four children, all of which are now adults and half of whom have flown the nest. I have been a district

councillor for 34 of the past 38 years. I have also been a long-serving parish councillor for Warlingham PC and Chelsham & Farleigh PC. While we are now both retired, for most of that time we ran our own business based in Warlingham.

If there is anything you would like to tell me about Tatsfield or Titsey, or anything you would like to ask, don't hesitate to contact me on jeremy@enterpress.co.uk or just call me on 07831 755980



JACQUELINE THOMSON REFORM UK CANDIDATE FOR ELECTION OF COUNCILLOR TO SURREY COUNTY COUNCIL WARLINGHAM DIVISION

My name is Jacqueline Thomson. I am your Reform UK Surrey County Council Candidate for Warlingham. I am now retired previously I worked for Southeast Coast Ambulance Service. I lived in Godstone for 18 years and moved with my husband to Warlingham six years ago. I am very concerned about maintaining the green belt as my generation has enjoyed it for so long. I would like to see the potholes dealt with properly once and for all using dedicated machinery. I would also like to see an end to fly tipping by making it easier to use the recycling centres. I do not want to see any more solar panel fields especially not on farmland. Net zero policies are unsustainable, making us poor as a nation and I believe we should be using our own oil and gas reserves. Immigration is out of control and has become unaffordable at the expense of British taxpayers.

Surrey County Council will be dissolved in 2027 making way for the Unitary Authorities of West and East Surrey.



JOHN YORKE CONSERVATIVE CANDIDATE FOR ELECTION OF COUNCILLORS TO EAST SURREY COUNCIL WARLINGHAM WARD

A creator and innovator, he founded a British veterinary medical equipment business, building it from the ground up and expanding internationally, including into the United States. Guided by his faith and Conservative values, he believes in hard work, responsibility, and giving back. He has lived in Surrey for over 42 years and now resides in Caterham with his wife Irene. A father of four and grandfather of six, he champions youth, the elderly, education, and start-up initiatives locally. He supports local services, protecting the area's character, and delivering value for residents.

LITTLE ACORNS PRESCHOOL



This month, Little Acorns preschool has taken the children on various trips! We visited Godstone Farm, enabling hands on interactions with the animals for a multisensory learning experience. Visiting the farm also provides children with an understanding on how to care for living things and the importance of caring for the natural world around us. Both children and staff had a great day exploring together!



Little Acorns also took a trip to Biggin Hill Children & Family Centre on the Bus! The children love to ride on the bus and really is filled with excitement on the journey! This Family Centre offers some great free sessions for parents, toddler and babies, has some lovely toys, an outside area and a sensory room too!



Thanks to our EasterCise event, we have purchased some new resources for the children to enjoy both indoors and outdoors; further enriching the children's learning experiences.

We are busy preparing our Nature Garden for use in the Summer too!

We have welcomed several new families to Little Acorns this term. If you are looking for a nurturing childcare setting where learning flourishes and friendships blossom, we'd love you to visit us. Contact: office@littleacornstatsfield.co.uk

The Little Acorns Team

TATSFIELD PRIMARY SCHOOL BREAKFAST CLUB



The school day at Tatsfield begins with Breakfast Club, long before the school gates open at 8.30am. Children in all year groups have an opportunity to be involved in games and activities and enjoy a healthy breakfast before the school day starts. Breakfast Club provision means that parents can get to work or appointments, knowing that their children are already safely at school.

Here are some comments from our children about Breakfast Club at Tatsfield:

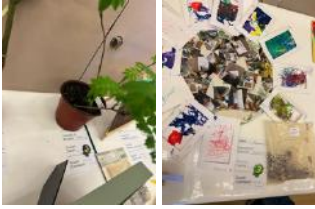
"Breakfast Club is fun. There are always lots of things to do and we can make friends from other classes." Poppie, Year 5

"I always feel included at Breakfast Club, even on my first day at the school. It's excellent." Natalie, Year 6



"The food at Breakfast Club is tasty and healthy. Breakfast Club puts me in a good mood for the day and I get to play before school starts." Olivia, Year 6

MONKEY PUZZLE DAY NURSERY



As always, we entered the Horticulture Show with our nursery creations – we came 2nd and 3rd so a big congratulations to all the children who participated in making these together!

We have been focusing on Artist of the Month as a nursery this month and going forward which has been amazing. We have tied it in with the campaign 'Children

as the Creators' which is solely about 'learning doesn't start with worksheets, it starts with marks, movement and play' – its enabled us to showcase all the special moments through the children's eyes!



Stitch the rabbit came for his annual visit to the nursery too! The children absolutely loved seeing him again, they enjoyed stroking him, feeding him and giving him lots of cuddles!

Forest School Holiday Club

We have spaces available for 5–8-year-olds to join in the holidays: May half term 27th and 29th May! Summer holidays: 27th and 29th July, and 4th, 6th, 10th, 12th, 18th, 20th, 24th, 26th August! For any more information please feel free to contact us.



Are you looking for childcare? We offer a high standard of care to children aged 3 months to 5 years old. Providing a range of fun and exciting activities, both indoors and outdoors all year around, exploring our local environment and all it offers on local trips, celebrating all traditions and cultures. **We have spaces available here at Monkey Puzzle Tatsfield**, if you are interested and want to book a tour of the nursery, please contact us.

Phone: 01959 928427 Email: manager@monkeypuzzletatsfield.co.uk

TATSFIELD HISTORY PROJECT

Would you be interested in taking part in the **Tatsfield History Project**? We're a small, informal group and you may have some fresh ideas on what we should be doing. If so, please get in touch. **Ian Mitchell**

Email: tatsfield.history@talk21.com Tel: 577376

Website: <https://e-voice.org.uk/tatsfieldhistoryproject/>

BACK TO THE MOON WITH ARTEMIS

Artemis takes over where Apollo left off, but what does it aim to achieve? Initially, it plans to return humans to the Moon as well as assemble a “permanent” presence somewhere close to its south pole where it’s thought water, in the form of ice, may be trapped inside craters that are permanently in shadow. There are plans for an orbiting lunar space station, already named “Gateway”, which will allow landing vehicles to dock, making it a form of hub where crew can be easily transferred between a lander and the Orion capsule. Space X were awarded the contract to build the Human Landing System (HLS) vehicles, although Blue Origin are also developing a landing craft. The presence of Gateway will remove the need to make a journey from Earth for each new mission to the Moon’s surface.

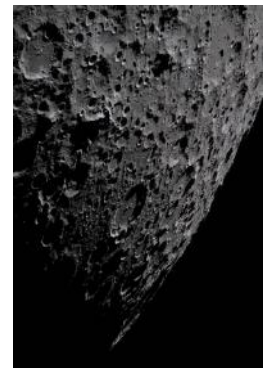


NASA’s Space Launch System rocket as it took off.

NASA/John Kraus

Of course, Apollo was a great success, but it did have its tragedies and heart stopping moments. I’m thinking of the loss of what was originally designated ST-204 but would later be renamed Apollo 1. It was during a rehearsal for launch that a fire engulfed the capsule killing all three crew members, Gus Grissom, Ed White and Roger Chaffee. And who can forget the nerve shredding experience of Apollo 13 where sheer technical brilliance and adaptability was driven very literally by do or die necessity.

Artemis 1 was launched in November 2022 which was the first time that the Orion spacecraft and the Space Launch System (SLS) rocket had flown together. This was an unmanned mission to test out both the SLS and, more importantly, the heatshield on the Orion capsule which is what will prevent the craft, and the crew, from burning up on re-entry into the Earth’s atmosphere.



Lunar close-up. NASA

Artemis 2 has now flown with a crew of four that travelled to the Moon, passed around the far side, which is always hidden from Earth, and then returned to Earth on 11th April. They travelled further into space than any humans have previously done.

What next then for Artemis? There have been some major changes to the project with the arrival of a new NASA Administrator a little over a year ago. 2027 is now the target for Artemis 3 to test its landers in low Earth orbit before Artemis 4 in 2028 lands humans on the Moon. However, before that, Space X must demonstrate the ability of the HCS (in an uncrewed configuration) to perform its functions safely.

Let’s not forget that Artemis is ultimately a stepping-stone to Mars and that everything done on the Moon will be upscaled and modified as we attempt to explore further into the solar system.

Brian Mills FRAS

NOT SO YOUNG CLUB

Our last meeting was our AGM at the WI hall. We have had a busy year so there was lots to look back on and even more to look forward to. After the formalities we enjoyed fish and chips supplied by Ye Old Ship followed by Pam's delicious cakes. Martin Allen joined us and played a key role in our afternoon entertainment of charades.

Not So Young Bingo night returned to Ye Old Ship on Thursday 16th April - more in the next issue.

Both of our cinema events were a success in March, so we are looking forward to more of these in the future.

The NSY have been offered complimentary tickets for Wisley gardens from the THS. So on the 10th May we will be off to see all the wonderful flowers and features there, followed by afternoon tea (of course!)

This year for our annual outing we will be going to Worthing, another new venue for us to explore.

Our meetings are always the second Tuesday of the month please contact me if you would like to join us.

Keep safe.

Sue Dowse, notsoyoung100@gmail.com, 07816110929

TATSFIELD 100 CLUB

Congratulations to the winners of the Tatsfield PFA 100 Club for **March 2026**:

1 st Prize	Justin Naughton	£42.00
2 nd Prize	Ken Budgen	£28.00
3 rd Prize	Michael Burbage	£14.00

Thank you for supporting sport the Tatsfield Cricket Club. If you know of anyone who wishes to join the 100 Club (for a modest £6 per month), or if you would like additional numbers, then please contact me at leames200@gmail.com.

Les Eames

OXTED & LIMPSFIELD CHORAL SOCIETY SUMMER CONCERT

Saturday 6th June 2026, 5pm.

United Reformed Church, Bluehouse Lane, Oxted.

Tickets available @ www.olcs.org.uk



TATSFIELD WI

theWI
INSPIRING WOMEN



‘Does my HRT patch look big in this corset’? Our speaker Lindsey Barrell, (WI President, National Sign Language Tutor for the WI, Reiki and a Life Coach) entertained a packed house in the WI hall as her alter ego 'Ms Cherry Bomb' burlesque artist.

Ms Cherry Bomb gave us a demonstration, and an education in how and what to wear to become a burlesque dancer. But first you need to choose

your burlesque persona, who do you want to be? then, what will be your stage name? Burlesque stage names are often tongue-in-cheek, they are cheeky, funny and overflowing with double-entendres.

How will you present yourself on stage, demure like a flower? powerful like a jungle cat? exotic? classic like a Hollywood star? Burlesque focuses on the “tease, character and artistic routine”.



It was a fantastic afternoon full of laughter, and of course at the end audience participation with ‘bump, grind, shimmy, Betty Boo and a huge ta-daaaah!!!!

The WI hall is open on Wednesdays from 10.30 to 12pm only £1 for tea/coffee, biscuits and a chat anyone is welcome. Our next meeting on 5th May is our AGM. **Contact Susan Smale 01959 577660 for WI info.**

Sandra Shury

TATSFIELD IN BLOOM

It was lovely to see so many of our TIB and THS friends at Marian's funeral on 7th April and to pay respects to a lovely friend and volunteer.



In the meantime, we have had a trying time as the plug plants which we ordered in October for delivery in late April, started arriving in the middle of March! As the polytunnel is not heated, this has meant a lot of opening and closing the air vents with the variance of day and night temperatures. We have managed to keep most of the little plants alive, although some of the nemesia and begonia have succumbed. The good news is that Parkers have said the plants are guaranteed for a year and so they will replace any that have died. We have also managed to delay the delivery of the Verbena plants and hopefully these will come at the correct time.



Unfortunately, quite a few of the violas which we planted in the Autumn didn't like the wet winter, so we have replaced these to ensure that the displays look good for the next 6-8 weeks until we plant for the summer. This has meant watering these due to the couple of weeks of hot and dry weather over the Easter period.



We have been looking after "Marian's Bed" at the front of the Village Hall and are delighted to see the muscari plants and other bulbs coming through. We weeded the bed and hope to plant some campanulas in there to give some ground cover in the next few weeks.

We are going to purchase a blossom tree for Marian which will be planted in the bed by the AMB shortly.

A new watering rota will be set up over the next few weeks for the summer. Paul Stainer will be sending out an email to those who helped last year – please reply with your availability from June to September. This is something that you may be able to help with if you cannot manage a Saturday morning session – it usually involves one week of watering either the Village Hall or Village Centre displays with another person.

We are delighted that a few new volunteers have come forward over the past few weeks, and we look forward to seeing them and working with them to keep the village centre beautiful. If you are interested in helping, please contact me by phone or email – my details are below.

Our grateful thanks to Jo Hart and her partner who have been doing such a wonderful job around the village litter picking. The village has never looked so tidy – thank you both and please continue!

Jill Hancock (577622/07711 417387) (jillhancock12@gmail.com)

ST MARY'S MATTERS



LENT, HOLY WEEK & EASTER 2026 Thanks to all the clergy and volunteers who enabled us to offer a range of services and events and as always, we are grateful to our Flower Team for decorating the church with beautiful seasonal displays.

We gathered in our groups to consider Drawing Near to God, we shared a lovely symbolic meal before the Maundy Thursday service, we gave out Hot Cross Buns on the Green and welcomed Storm Dave to our outside Easter Vigil Service as the sun went down. Easter Day found us sharing jubilant songs and chocolate eggs! Alleluia!

SUNDAY SERVICES Our main Sunday service with hymns is at 10am followed by refreshments in the Millennium Hall. All are welcome. Our website is at www.lttm.org.uk/stmarys which gives more information and has a link to our weekly Notice Sheet. You can also keep up with events at St Mary's by following us on Facebook at <https://www.facebook.com/people/St-Marys-Tatsfield/61584833041098/>

10TH - 15TH MAY, CHRISTIAN AID WEEK Christian Aid supports communities living in poverty through fundraising, prayer and advocacy. This year's focus is on the challenges faced by urban farmers in Nairobi and communities in Burundi, where many families struggle daily to access food and basic essentials. Through partnerships like 'Beacon of Hope' families receive tools, seeds and training to grow vegetables in urban spaces providing them with food and income. The initiative emphasises sustainable solutions to poverty and food insecurity. You can donate via the website link: give.christianaid.org.uk

6am THURSDAY 14TH MAY, ASCENSION DAY SERVICE We look forward to our annual 6.00am service of Holy Communion in the churchyard (in the Millenium Hall, if wet) led by our Team Curate Revd Debra Elsdon. Breakfast follows in the Millennium Hall and any donations received will support the work of Christian Aid. For catering purposes please email the Church Office if you would like to join us: stmoffice.lttm@btinternet.com

ST MARY'S SUNDAY TEAS 2026 Our popular Summer Teas commences Sunday 24th May from 3pm to 5pm in the Millennium Hall and continues until the end of September. Visitors old and new are all very welcome to join us and enjoy delicious cake with tea or coffee.

HOLY COMMUNION FOR THE SICK AND HOUSEBOUND Please contact Revd Debra by email: curate.lttm@gmail.com



PERSONAL PRAYER REQUESTS We would love to support you in prayer. Please add your request to the Prayer Request Book near the Baptism Font, or email stmoffice.lttm@btinternet.com

LIFE EVENTS For enquiries regarding baptisms, weddings, funerals, burials and the interment of ashes please contact stmoffice.lttm@btinternet.com

DONATIONS TO WESTERHAM FOODBANK We support our local community in need and delivered food produce on Thursdays 23rd and 30th April. Our next drop will be 23rd May. Any non-perishable food can be left in the Narthex at St Mary's opening times below. To check what items are urgently needed or to make a monetary donation please visit <https://www.visitwesterham.org.uk/westerhams-foodbank>. Thank you for your continued support. **Hilary Vale 01959 577864**



CHURCHYARD TEAM Our second maintenance session of the year took place on Saturday 11th April. Please note that there are still bags of compost freely available for collection from the compost area. Our next maintenance session will be on Saturday 2nd May at 10am, when any new volunteers joining our team to keep our beautiful churchyard looking cared for, will be made welcome! **David Gulley.**



VISIT US Our churchyard has splendid views over the Downs and our pretty church is open 9am – 4.30pm on Tues, Weds, Thurs, Saturdays and Sundays for viewing, prayer or reflection.



HIRE OF THE MILLENNIUM HALL Looking for a well-equipped venue for your event? Our Millennium Hall is available for bookings. **Sheila Cook (01959 577443)**

ST MARY'S CONTACTS

Our contacts are detailed near the front of this magazine and on our website www.lttm.org.uk/stmarys

TATSFIELD ONLINE

Village website: www.tatsfield.org.uk

Village facebook page: search for 'Tatsfield Village' on facebook

Tatsfield Talk facebook group: search for 'Tatsfield Talk' on facebook, and ask to join to be able to view and post. **Twitter:** @tatsfieldtweet

REGULAR TATSFIELD EVENTS AND INFORMATION

Sun	9.30 am	Yoga with Lexy, VH
	10.00 am	Church service – StM
Mon	9.30 am	Tots on Top – CH
	9.30 am	Shape and Tone with Gary - WIH
	1.30 pm	Bridge Club – WIH
	7.00 pm	Art Group – VH [Term time]
	8.15 pm	Bingo – TVC
Tue	1.00 pm	Not So Young Club (2 nd Tuesday of the month) WIH
	2.00pm	Cosy Crafters, Sheree’s Store and Tea Rooms
	2.30 pm	WI Meeting (1 st Tuesday of the month) WIH
	4.00pm	Paracise VH
	7.00 pm	Scouts and Explorers – SH
	6.15 pm	Barré with Fi - VH
Wed	9.00am	Mat Pilates with Emily, WIH
	10.30 am	WI Pop In – WIH
	2-4 pm	Composting Site OPEN
	6.00 pm	Shape and Tone with Gary – WIH
	6.00pm	Over 8s Jujitsu, SH
	6.30pm	Latin Fusion Dance Fitness for Adults, TPS
	7.30pm	Adults Jujitsu, SH
	7.30 pm	Yoga – VH
Thu	9.30 am	Yoga with Lexy, StM
	9.30 am	Shape and Tone with Gary, WIH
	2.00 pm	Scrabble at AMB (2 nd Thursday of the month)
	6.00 pm	Over 8s Judo – SH
	6.15pm	Barré with Fi, VH
	7.30 pm	Adults (14+) Judo - SH
	7.30 pm	Tatsfield Singers - TPS
	7.30pm	Mat Pilates with Emily, WIH
8.00 pm	Table Tennis – VH	
Fri	9.30 am	Combat Fitness - SH
	10.00am	Mat Pilates with Emily, WIH
	1.30 pm	Short Mat Bowls –VH
	4.15pm	Boom Arts Academy Tots Street Dance – VH
	4.45pm	Boom Arts Academy Lower Junior Street Dance – VH
	5.30pm	Boom Arts Academy Theatre and Singing – VH
	6.15pm	Boom Arts Academy Junior Street Dance – VH
	8.00 pm	Badminton Club – VH
Sat	9.00 am	Under 8s Judo – SH
	10.00am	Composting Site OPEN 10am-12pm
	10.15 am	Over 8s Judo - SH

Venues: AMB - Aileen McHugo Building • CGA - Community Games Area • MH - Millennium Hall • SH - Scout Hut • StM - St. Mary’s Church • TACG – Tatsfield Allotments & Community Garden • TVC - Tatsfield Village Club • TPS - Tatsfield Primary School • VH - Village Hall • WIH - Women’s Institute

UPCOMING EVENTS – VILLAGE AND BEYOND

MAY

2nd Sat	10.00am	Churchyard Tidy Up, StM
2nd Sat	3.00pm	Tatsfield Art Group Exhibition, Private Viewing, VH
3rd Sun	11.00am	Tatsfield Art Group Exhibition, VH
4th Mon	11.00am	Tatsfield Art Group Exhibition, VH
7th Thu	7.00am	Surrey County Council & East Surrey Council Elections, VH
9th Sat	9.30am	Fairtrade Tea Tent, by Sheree's Store
9th Sat	7.30pm	North Downs Sinfonia Concert, VH
10th Sun	10.00am	Annual Wisley Visit, RHS Wisley
14th Thu	6.00am	Ascension Day Service, StM
12th -16th	various	The Oxted Players, Journey's End, Barn Theatre
18th Mon	8.00pm	Parish Council Meeting, AMB
19th Tue	6.45pm	Chartwell Cancer Trust Opera Night, Shampam, Westerham
19th Tue	7.30pm	Dare to Dream Jr, Barn Theatre
21st Thu	7.30pm	Seussical Jr, Barn Theatre, Oxted
22nd Fri	7.45pm	The Denotones, Barn Theatre, Oxted
23rd Sat	5.30pm	NDCO 10 Years of Fun, Woldingham School
24th Sun	3.00pm	Summer Sunday Teas, StM
24th Sun	2.00/6.30pm	All-England Festival Eastern Area Final, Barn Theatre, Oxted
27th Wed	7.30pm	Miniature Portraits, Arts Society, Limpsfield Church Hall
29th Fri	7.45pm	Bee Gees Songbook, Barn Theatre, Oxted
30th Sat	10.30am	67 th British Film Collector's Convention, Barn Theatre, Oxted
24th Sun	3.00pm	Summer Sunday Teas, StM
31st Sun	3.00pm	Golden Age of the Hollywood Musical, Barn Theatre, Oxted

JUNE

4th Thu	7.45pm	The Man Who Left The Titanic, Barn Theatre, Oxted
5th Fri	7.45pm	The Konks are Koming, Barn Theatre, Oxted
6th Sat	5.00pm	OLCS Summer Concert, URC, Bluehouse Lane, Oxted
7th Sun	3.00pm	Summer Sunday Teas, StM
12th Fri	7.45pm	ELO Encounter, Barn Theatre, Oxted
13th Sat	7.45pm	Oxted Comedy Night, Barn Theatre, Oxted
14th Sun	3.00pm	Summer Sunday Teas, StM
19th – 20th	various	Mystery at Magie Manor, Glow Jrs, Barn Theatre, Oxted
21st Sun	3.00pm	Summer Sunday Teas, StM
24th Wed	7.30pm	Joseph Duveen Art Dealer, Arts Society, Limpsfield Church Hall
25th – 27th	various	Little Shop of Horrors, Glow, Barn Theatre, Oxted
28th Sun	3.00pm	Summer Sunday Teas, StM

PARISH MAGAZINE EVENTS LISTINGS

If you would like your event included in this diary in future, please send details to tatsfieldpm@gmail.com. Please also let us know if any information has changed.

TATSFIELD MARTIAL ARTS

Nutfield Judo Club Competition On Sunday 22nd March, twelve members of TMA travelled to Nutfield JC to take part in their annual judo competition and for many, this was their first taste of competitive judo. There were some great displays of judo and courage throughout the day for everyone, plus lots of medals won. Special mentions must go to Eloise from our Saturday morning judo tots class, who won the Spirit of Judo trophy and to James Troake from our Thursday senior class, who despite being a yellow belt, beat a brown belt, twice!

Gold Medals: Eloise Marnham; Willow Ruggins; Arno Hutchinson

Silver Medals: Oliver Brannan; Issac Care; Ethan Moore; James Troake; Teddy Linnemann; Teddy Carlise; Finley Bushell

Bronze Medals: Archie Plunkett; Josh Sales

Kids Jujitsu Grading On 25th March our kids jujitsu class were put through their paces and graded for their next belts. Jujitsu is a self-protection martial art and quite technical and we had been working on the grading syllabus for weeks leading up to the grading day. Delighted to say everyone passed and impressed the visiting black belt examiners!

Judo Gradings March was judo grading month at the club and numerous gradings have been carried out. Our Thursday senior class now has two new brown belts, Tom Coombes



and Harry Baxter – both ex-royal marines and both a real handful on the mat! Harry, a Tatsfield resident, started judo at the club during lockdown, attending the same household/family sessions (the only classes we could run for a time) with his son. Despite his son stopping judo training after a few years because of football training (he'll be back!), Harry has continued and is now one grade away from the prestigious black belt.

Judo Tots Grading On Saturday 21st March our judo tots (4-7 year olds) were put

through their paces at a club grading. For these gradings, the children must learn certain techniques and Japanese terminology, then perform them in front of their peers and the instructors. Everyone performed well and received their shiny new belts!

Jujitsu Black Belt Gradings On Saturday 28th March, club coaches Stuart Apps and Alastair Durkin both undertook their next black belt gradings. Stuart was grading to 2nd Dan and Alastair was grading to 3rd Dan. I arranged for a guest examiner, a 6th Dan, to come to the club and run the grading – always better to have someone outside the club as examiner for these higher grades as it helps keep standards high and shows that we are not a club that just ‘self-promotes’. Both Stuart and Alastair had been training for weeks for the grading, and it showed on the day as they were put through their paces before being awarded their deserved promotions.

British Judo Veterans Open 2026 On Saturday 28th March, club coach Ben Davy competed in the British Veterans (over 30’s) Open in London. Ben was competing in the -81kg weight group for 45-50 year olds, and being an open event there were competitors from across Europe taking part. Ben had five contests, of which he won two meaning he secured the bronze medal!

Adam Plinston

THE ARTS SOCIETY LIMPSFIELD

Miniature Portraits - Tiny Treasures close to our hearts by Cindy Polemis. **Wednesday 27 May 2026. Evening lecture only starts at 7.30pm, Limpsfield Church Hall RH8 0DG;** come early to enjoy refreshments. Guests £10. Whether used for diplomatic gifts or tokens of love, between the 16th-19th centuries miniatures were commissioned as small portraits which could be held in the hand or placed inside locket creating an intimate relationship between the owner and sitter. Cindy looks at the history of these tiny treasures of art.

Joseph Duveen: Charismatic crook or the world’s greatest art dealer? by Mark Meridith. **Wednesday 24 June 2026. Evening lecture only starts at 7.30pm, Limpsfield Church Hall RH8 0DG;** come early to enjoy refreshments. Guests £10. “Europe has a great deal of art, and America has a great deal of money,” remarked Joseph Duveen. It was a simple enough observation, but there was only one man who was perfectly positioned to combine his quintessential English charm with an unparalleled gift for creative salesmanship, allowing him to convince the tight-fisted titans of Wall Street (Frick, Morgan, Mellon etc.) that there was indeed one thing more important than money - art - and, “when you pay high for the priceless, you’re getting it cheap”. Without Duveen, there is no Frick; and, without Duveen both the Metropolitan Museum in New York and The National Gallery of Art in DC would struggle, or even fail, to be considered world-class today. But was he just a charismatic crook milking millionaires, or was he indeed truly deserving of the title, ‘world’s greatest art dealer’?

North **NDCO** Downs
Community Orchestra

aka The Fun Orchestra

with Musical Director
Anna Maria Tabor

**Invite you to join us for a concert celebrating
10 years of fun-filled music making!**

Featuring old and new favourites including:

**Mozart - Pirates of the Caribbean - Handel
Phantom of the Opera - Tchaikovsky - Moonriver**
and lots of other classics for your enjoyment



Saturday 23rd May 2026, 5.30pm

Millennium Theatre, Woldingham School, Caterham, CR3 7LR



Tickets £10.00 Under 18s free

Available online at

thefunorchestra.co.uk

Registered charity no. 1183074

Tatsfield Singers Present

Songs from
**STAGE &
SCREEN**

Tatsfield Village Hall

Saturday 4th July at 7pm

(Doors open 6:30pm)

LIVE BAND!

Tickets £10
from Sheree's Store
or On the Door



Opera Night

Shampan Westerham

In Aid of
The Chartwell Children's Cancer Trust

Tuesday 19th May 2026, 6:45pm

Join us for an enchanting evening of fine dining,
opera music and charity

Tickets £55 per person



MANAK
SOLICITORS

SHAMPAN
WELLING · BROMLEY · WESTERHAM

Dear Supporter, We are delighted to let you know that tickets are now available for our Charity Opera Night on Tuesday 19th May at Shampan, Westerham. Join us for an unforgettable evening of live opera, fine dining, and fundraising! What's in store:

- Welcome reception
- Live performances from talented opera singers
- Sharing-style Indian dining experience
- Charity raffle & auction with fantastic prizes
- Warm, welcoming atmosphere in an award-winning venue

Tickets: £55 per person; Tables of 10 available. If you would like to secure your place(s), email mcalthorpe@chartwellcancertrust.co.uk or call 01959 570322.

All the funds raised from this event will support our vital work, including: **AV1 Robots** to keep children connected to school during treatment; **specialist observation monitors** to ensure safe, life-saving care on Tiger Ward, Queen Elizabeth Hospital, Woolwich.

We would love for you to join us for what promises to be a memorable and meaningful evening.



TATSFIELD GARDENING CLUB - HOME OF TATSFIELD HORTICULTURAL SOCIETY

SPRING SHOW SATURDAY 11TH APRIL 2026

The members of the Tatsfield Horticultural Society would like to extend a heartfelt thank you to everyone who entered, supported, and visited the show on Saturday. Your enthusiasm and involvement are what make this event such a special occasion in our village calendar.

From the moment you stepped into the Village Hall, it was truly a feast for the senses. The air was filled with the wonderful fragrance of floral displays, from the delicate scent of coronilla citrina (which has a rather unfortunate common name) to the cheerful brightness of daffodils and tulips. The vibrant colours, creativity, and sheer variety of exhibits made for a stunning display, showcasing the talent and dedication within our community. Most of all, it was the coming together of so many villagers and local visitors that created such a warm, friendly, and joyful atmosphere throughout the day.

Our judges certainly had their work cut out for them this year, as the standard of entries was high across all categories. It was particularly encouraging to see such a wide range of participants, from our youngest entrant at just 18 months old through to our more experienced exhibitors. We were especially delighted to see increased participation in the junior sections—proof that the next generation of growers, bakers, and creators is already flourishing. The ever-popular LEGO class drew a fantastic number of imaginative and competitive entries, much to everyone's delight and our photography classes are also becoming ever so popular.



Trophies were awarded to the following individuals:

Colgate Challenge Cup for Horticulture

Sue Warren Trophy for Flower Arrangement

Theobald Cup for Crafts

Lambert Art Trophy for Art

Ray Collins Trophy for Photography

Tom Rushden Cup for Domestic

Peter Hallam Trophy for Juniors

Derek Weller Cup for best Daffodils

Emily Streets Cup for best Flower

Tatol Prize for Best Art in Show

David Hadden

Susan Saunders

Bryony Martin

Linda Lambert

Lesley Putt

Valerie Payne

Luther Badura

David Hadden

Susan Saunders

Hannah Franklin



Knights Gift Vouchers to the value of £10 were awarded to Jane Attfield for coming second and £20 to Margaret Bishop for coming first for their entries in the Horticulture section 'a vase of mixed garden flowers picked from the garden'.

While we celebrate this year's success, we are already looking ahead with excitement to our Autumn Show. Whether you are a seasoned exhibitor or someone who

has never entered before, we warmly encourage you to take part. There truly is a class for everyone—flowers, fruit and vegetables, baking, crafts, art, photography, and junior categories—so why not have a go? You might be surprised at what you can achieve, and it's a wonderful way to get involved in village life.

We look forward to welcoming even more entries and new faces at our next show. Let's make it bigger, brighter, and even more memorable!

Keep up to date by visiting Tatsfield Gardening Club online – Home of Tatsfield Horticultural Society at www.tatsfieldhorticulturalsociety.weebly.com

THE TATSFIELD GARDENER IN MAY

In my early days in horticulture, we used to refer to this month as Mad May because there was so much to do. With a wary eye on the weather there were summer display plants to be moved out of greenhouses to harden off ready for planting out in June. Remember that back then there was no such thing as polytunnels! Instead, we had long rolls of light woven fabric, probably sisal, that would be rolled out over the plants to sit on wooden slats just above the plants if we suspected that there might be a frost. Weather forecasting back then did not benefit from satellites and weather radar, so we were taught to 'read the weather' and act accordingly. Rolling it back up next morning was a major task as the fabric was more than twice as heavy due to overnight moisture or dew. The climate has now changed so much that these tasks are carried out in April, and planting is being done in late May, that is fine but, remember that at our height in Tatsfield we can still have a brief dawn frost throughout this month!

At our Spring Show I had a conversation with a keen vegetable gardener who was asking me how early could he plant out his runner beans he had started in pots in his greenhouse, a very topical subject in Tatsfield! The bean family will not grow in a cold wet soil and where there is a risk of cold winds and/or a frost. If planted in these



conditions, if they survive at all, they will look very sad and are likely to be overtaken by seedlings that were planted later. You will notice that I am not giving any dates because in Tatsfield, May can have different weather than say, the lighter, warmer soils down in Westerham and Oxted! When I had my allotment in Tatsfield I planted my beans from pots in mid-May (risky) and placed a bean seed beside it. Sometimes it worked very well but other times it didn't!

After such a wet start to the year our soils in Tatsfield are drying out very quickly and it is looking good for a successful growing season. I have looked at the Met Office long range forecast and it is fairly confident that there is a low risk of cold Easterly winds, or frost in the South, but of course our weather is fickle!

A word on watering the garden. Using a handheld garden spray, or watering can and rose, and waving it around to wet the surface is a waste of water and can actually be harmful to plants! Plant roots are very sensitive to moisture and can change direction as they seek out this vital substance. With repeated light surface watering, plant roots will grow towards the source of moisture, we call this shallow rooting. In periods of very dry weather plants will quickly wilt and die if water is not available. It is better to water thoroughly and less frequently, so the moisture goes deep into the soil and the roots follow it down. As young garden apprentices we were told repeatedly to water the soil thoroughly, not the plant, I remember watering summer bedding displays using a hose tied down the shaft of a long-handled hoe to reach into the flower bed, we got a good telling off if the foliage of the bedding plants were wet!!

Jon Allbutt

WILDLIFE GARDENING TIPS FOR MAY

The grass is growing in the spring sunshine, but please do resist the urge to mow it until at least June to let it thrive for the benefit of all those birds, bugs and bees – last May we even spotted a frog making its way through our ankle-deep lawn in search of a mate. I'm so glad I didn't find it with the lawn mower! Leaving the grass au naturel for just a month can make such a positive difference for all our garden visitors. It is so colourful too with all those beautiful daisies, buttercups and other wildflowers brightening the place up.

May is such a busy time in the wildlife garden, and one of my favourite sights is to see the fledgelings starting to flit around the garden learning their airborne skills. They chatter so much it is not unlike a primary school classroom. It is quite a treat to have them zinging around the garden, though of course it helps if you've put up a nesting box for them to live in – I have found Spring is a good time of year to put nesting boxes up now that the weather is a bit more conducive, so even if you've missed the first brood you'll be in time for the second. And, of course, small birds will take shelter in a nesting box any time of year if the weather gets rough.



Other things to look out for include the arrival of migrant birds, such as swifts, swallows and house martins, many of which prefer to nest in buildings such as sheds, garages and houses, so they won't be far away from our gardens. These birds are specialists at eating insects

on the wing, so they won't be landing in our gardens but just passing through on their way to and from the local countryside.

On a larger scale, the local red kite youngsters will soon be learning to ride the thermals high above the village – quite a sight, especially considering how close kites were to extinction just a few years ago.



If you are lucky enough to have hedgehogs, May is the month where they start the noisy business of rutting, or mating – males compete for females and may even roll rival males away in a ball – where's the dignity in that!?

One more thing for garden wildlife lovers; David Attenborough has done it yet again! Following on from the stunning footage in the BBC's *'Wild London'* programme, if you haven't seen it, I highly recommend a wonderful new series on iPlayer called, *'Secret Garden'*, where Attenborough reveals the drama unfolding in the hidden wild world of Britain's backyards where, even in familiar surroundings, the rules of the wild are still in force. Great viewing!



Interesting fact of the month... There has been a bit of fuss recently about something or other called Artemis II that flew for ten days without touch-down and travelled 695,081 miles. Compare that to the humble little swift that regularly flies for a whopping 300 days without touching down. What's more, a swift will clock up an astonishing 1,250,000 miles in its lifetime during which they will eat, sleep and even mate on the wing. Each year they stop flying for just long enough to raise a family of typically ten chicks before a 6,000-mile flight to Africa. So without wishing to take anything away from the outstanding achievements of the Artemis programme, nature has been outperforming it for a few million years already.

Jim Kenney

THE NIGHT SKY IN TATSFIELD – MAY 2026

How many planets are there in our solar system? If you guessed eight then you're right, but if you said 9 then you're way out of date!

The planets, as we know them, stretch from Mercury out to Neptune that marks the furthest reaches of the Sun's planetary family.

If we look out into the depths of the solar system, beyond Neptune, we find Pluto that used to be classed as a planet but isn't any longer. It's hard to believe the furore that change of status caused and that it came about 20 years ago, this year. So, what was it that happened that would result in Pluto's demotion?

In the opening years of the 19th century Ceres was discovered between the orbits of Mars and Jupiter that was immediately classified as the "missing planet". However, in the following years more such bodies were found out beyond Neptune.

Then in 1978 Charon, Pluto's largest moon, was discovered and with knowledge of how long it took to orbit its parent body it was possible to calculate the mass of Pluto. This turned out to be less than expected. Also, Eris, beyond Neptune was found in 2005 and revealed itself to be more massive than Pluto which left astronomers with a growing dilemma and one which many had seen coming for years. The problem was that there was no agreed definition of what a planet was although there was a vague understanding which had existed for some time. With telescopes and associated technology improving rapidly, the number of new discoveries would surely grow at a similar rate and ultimately, we could end up with dozens of planets in our solar system some of which could be nothing more than small, irregular chunks of rock.

To address this issue the International Astronomical Union (IAU) set up a committee to suggest how to define a planet. There were several proposals but ultimately, in 2006 a vote was taken with the result that a planet must conform to the following three rules:

- It must orbit around the Sun and not orbit around something else that is in orbit (such as a moon around a planet).
- It must contain enough mass to have become roughly spherical (hydrostatic equilibrium).
- It must have cleared the neighbourhood around its orbit - either absorbed smaller bodies in its orbit or ejected them into another region or captured them as satellites.

The issue for Pluto was that it adheres to the first two but not the last one so, for that reason, it cannot be classed as a planet which begs the question "What is Pluto?" The answer from the IAU was that it was a member of a new class of solar system bodies called "Dwarf Planets" of which we now have five members. They are, in order from the Sun outwards, Ceres, Pluto, Haumea, Makemake and Eris. Ceres, is found in the asteroid belt and is the only member of the group located within the inner solar system. The other four lie beyond the orbit of Neptune in the Kuiper Belt. This is a torus (doughnut) of small bodies suggested by the astronomer Gerard Kuiper as far back as 1951. It is highly likely that there are many similar bodies in that region just awaiting discovery. **Brian Mills FRAS**



COSY CRAFTERS

Do you enjoy crafting? Are you working on a craft project? Why not bring it along to our Cosy Crafters Corner on Tuesday afternoons 2pm until 3.30pm in Sheree's Store and Tea Rooms. It's a nice friendly group where you can enjoy a relaxing time in good company, and its **FREE**. We swap talents, learn stuff, have a go at new crafts, and have a good old natter over a cuppa. Most crafts acceptable. No need to book, just pop in any Tuesday afternoon at 2pm.
Sandra Shury



NORTH DOWNS SINFONIA

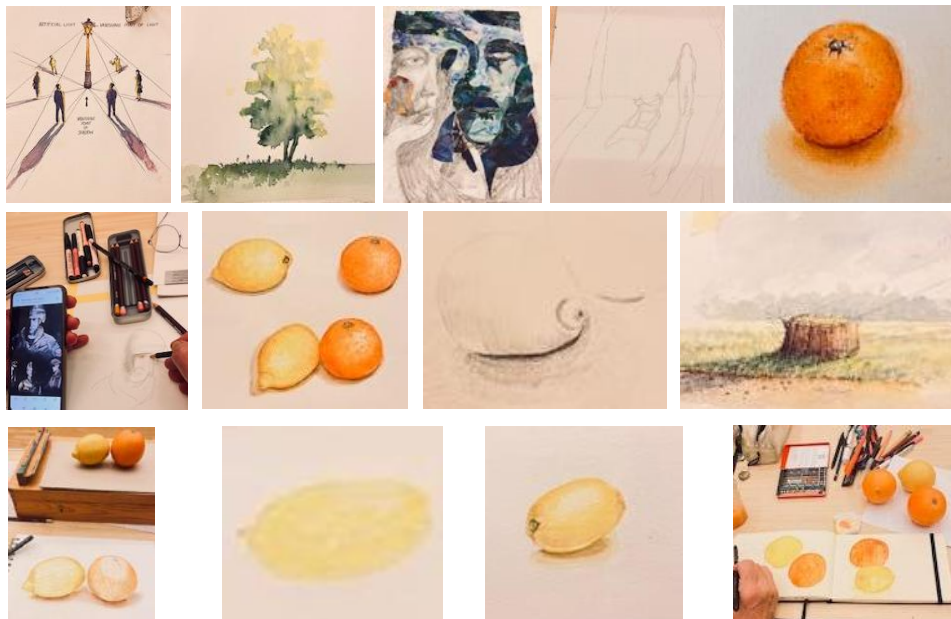
Richard Strauss – who was German and not related to the famous Austrian Strauss family who composed so many well-known waltzes, wrote two Horn Concerti, of which the first is by far the most popular. NDS will be featuring this at their Spring Concert at 7.30pm on 9th May in the Village Hall. The soloist will be Tom Pinnell, and the concert will be conducted by Liz Worth, who has conducted NDS on several previous occasions. Strauss wrote the concerto in 1883 when he was only 19 (he wrote the second when he was nearly 80) having been brought up with the horn, his father being a leading orchestral horn player of his day. He wrote it in the Romantic style, showing the influence of Mendelssohn, and it is now a staple of the classical repertoire.

The orchestra will also be playing the JC Bach (JC Bach was the 11th son (of 18 children!) of the famous JS Bach) Sinfonia No 2, and the two Mozart pieces, the overture 'La Clemenza di Tito' and the symphony No 31 'Paris'. Although JC Bach is not nearly so well-known as his famous father, he was very popular in his time and strongly influenced the music of (amongst others) Mozart, Haydn and Beethoven. He lived most of his adult life in London. Besides writing 13 operas, he composed many other works, marked by their melodic charm. Mozart needs no introduction. Of his 20 operas, La Clemenza di Tito was the last, composed in 1791, the year of his untimely death. The Paris symphony, (1778) was composed during an unsuccessful job-hunting visit to that city, where it received a warm reception.

Tickets for the concert are £13 or £11 for concessions and may be booked by emailing northdownssinfonia@gmail.com then picked up and paid for on the door. All tickets include a programme. Alternatively, phone 01959 577659 to book tickets.

TATSFIELD ART GROUP

The spring term started with Paolo Francis workshop which was all about 'Shadows' observing light, understanding shadow shapes, layering tones, and using colour theory to create depth and dimension.



Come and join us at our annual Art Exhibition in Tatsfield Village Hall, which begins on Saturday 2nd May (Private View 3pm until 7pm) We will open to everyone on Sunday 3rd May 11am until 4.30pm also Monday 4th May 11am until 4.30pm entry is free. Homemade cakes and savouries will be available to buy on Sunday and Monday. 1st prize in the raffle will be a hamper bursting with Italian products.

The children of Tatsfield school have all entered TAG's art competition. The school will vote for the top 5 paintings from each year group and the lucky finalists will have their paintings on display at the exhibition where your votes will decide the winners so please come along and vote. The winners will be announced at 4pm.

If you would like further information, please contact **Sandra Shury 07867502235** or **Carol Gaskell 07815775859**. We meet on Mondays 7pm until 9.30pm at Tatsfield Village Hall during term times. If you fancy trying something new, just pop in and have a chat. If you don't fancy becoming a member you can always join us for any of our workshops, only £15, we would love to see you. You can find us on Facebook **Tatsfield Art Group** and Instagram **tag_tatsfield_art**

Sandra Shury

NIGEL'S NATURE NOTES

As a product of the 1960's primary school education system (more liberal than the current one) I feel perfectly justified beginning this month's notes with a garish - **WOW!** The reason for this is that Stuart (Payne) has almost certainly, with technological assistance, added a little brown bird to our village checklist:

(24.03.26.) *'It was interesting to read John Rosenbaum's very impressive list of bird observations and, as you said, no point in trying to compete with that! However I may be able to add one. For some time, we've been using the excellent Merlin app for identifying bird song. It is fascinating to stand in a wood and watch the screen as the various birds call in, and it's a great tool for not only helping identify the many birds heard but not seen but also tuning your ear into learning the various calls. At the bottom of Mum's garden Merlin has recently identified a **Treecreeper**, and it's comforting to know they are still around having not actually seen one since the 1970's when I remember spotting them working their way along the trunk of an old **Oak** tree next door.*

*Now we come to the addition to the list. My sister, Helen, was using the app in the garden on a recent visit in March and it picked up a **Cetti's Warbler**. This is a new bird to me. I saw one for the first time on Dungeness last year, and then again closer to home at the KWT Sevenoaks wildlife reserve. They are notoriously difficult to spot, being basically brown and hiding in bushes, but do have a distinctive call. Have they been seen, or heard, in Tatsfield before? Merlin is generally accepted as being pretty accurate but of course isn't infallible. It would be interesting to know if there are any other recorded observations.'*

Well, Stuart, I've been writing these notes for many years and can tell you that this is the first time anyone has mentioned the Cetti's Warbler. Consequently, unless someone writes in with a statement to the contrary, I'm happy to record this as a first 'sighting'. As our American friends (?) would say – '**Good Job!**'

On the subject of birdsong, I'm sure that readers living along upper Greenway or the vicinity will have heard a **Blackbird** singing a repetitive phrase for hours on end over the past few weeks. This is nothing like a Song Thrush that repeats a phrase three or four times and then moves on to a new one. This is one constant phrase. I know Starlings have a habit of picking up phrased notes that they have heard but I didn't realise that Blackbirds did the same. I'm just wondering if anyone can identify the tune. Perhaps someone has been playing a Philip Glass track loudly through open patio doors? It's time to own up!

And on the subject of Blackbirds, I have the unpleasant task to report a bird-slaughter. Whilst watching my daily dose of 'Frasier' an immature **Blackbird** smashed into one of the living room windows. Upon inspection, I saw a **Magpie** holding the Blackbird down, pecking savagely at its head and throat. Upon seeing me at the window the Magpie flew off. I rushed outside hoping to save the victim but it was too late; the Blackbird faded away in my hands. Magpies are, as we know, savage birds. And yet with their pristine

black and white plumage they are so beautiful. But that's nature. It's not all 'pwitty flowers' and 'cuddly bunny wabbits'. This experience certainly reminded me of the age-old adage: 'You can't judge a book/bird by its cover/feathers'.

Our second report comes from Paul (Jackson) who also has a penchant for technology:

(10.04.26.) 'I also saw the **Lapwings** (peewits to me) mentioned by Ruth in your last column, on a wet day when there must have been something interesting for them in the field off Approach Road.

You might be interested to know that an unusual number and variety of birds were identified on the Merlin app yesterday in Maesmaur Road for half an hour mid-morning and I thought this might also be of interest to your readers. The total of 28 species included all the usual suspects such as **Treecreepers**, **Long-tailed tits** and **Chiffchaffs**, but also **Buzzard** (often heard calling over Limehouse Bottom), **Chaffinches** and **Greenfinches** (perhaps now recovering in numbers), **Marsh tit**, **Goldcrest** and most interestingly, **Firecrest** (this last never actually seen by us).



Whilst writing I thought it might be helpful to point out the designated Ancient Woodland in the valley (woods that have persisted since at least 1600), the diversity of which assists the local bird population. People may not be aware that this area between Ninehams Road and Maesmaur Road [see map] lost many old **Beech** trees in the 1987 storms and the first flush of subsequent **Ash** seedlings have largely succumbed to disease; it looks messy now and is largely impenetrable but the natural process of regeneration will continue.'

Thanks for this, Paul. Twenty-eight species along one road in a period of thirty minutes. I'm going to use that expression again – **WOW!** I'm delighted also that you have joined the Lapwing (Peewit) Spotters Club. They seem to have recently disappeared, so I am eliminating the possibility of them breeding nearby. Nevertheless, even passing through they are a delight to observe.

Next month – Toby, our one and only teenage contributor, sends us his latest report. Toby is a genuine hands-on, get-your-boots-dirty 'birder', not simply a 'bird watcher', like me. Consequently, you may be expecting something special and guess what - you will not be disappointed! And for those of you who enjoy a challenge we have an unknown fungus for you to identify, courtesy of John (Rosenbaum). **Tatsfield is awake!**

**Any news or views? Contact: nigelshaw2000@hotmail.com
Alternatively, drop a note in to 'Primrose Ridge', Greenway.**

TATSFIELD A CENTURY AGO

May 1926 was marked by the national nine-day general strike.

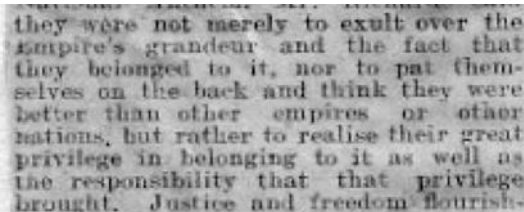
Called over a dispute in the coal industry, it led to more than a million and a half workers taking part. In Tatsfield, the parish council set up a special committee to co-ordinate local food

supplies. Meanwhile, the Westerham Herald reported one incident when, despite heavy rainfall, at least one Tatsfielder decided to walk to his destination instead of taking a bus. He did this because the bus was being driven by one of the many volunteers encouraged by the government to break the strike.



Apparently in tune with the times, a '*school for worker-conductors*' - run by the composer Roland Boughton of the Castle in Goatsfield Road - hosted 20 men and women wishing to perfect their skills. The London Daily News said this was the first of its kind in Britain. Students were '*conductors of Labour or Co-operative choirs*'. The composer, Vaughan Williams, was to give a lecture at the school.

Tradition then returned to Tatsfield with the crowning of the May Queen and dancing round the maypoles by village children. Their family names are familiar to so many of us today such as Beagley, Higgs, Jupp, Shrubbs, Skinner, Streets, Tapsell or Watson.



And then came Empire Day. A local newspaper cutting preserved at the school reported that pupils were encouraged to think about the privilege of being part of the empire as well as the responsibility brought about by that privilege.

From time to time I've mentioned Edyth Goodall, the West End actress who lived at Junes Close in Goatsfield Road. In May 1926 it was her husband, Leonard Schuster, who was in the news – an early motoring offender. He was fined ten shillings for having a faulty rear light on his 1920s car.

At the end of the month, the Surrey Mirror returned to an issue which caused problems for landowners in Parkwood Road and Rag Hill for decades. It was over the route of a footpath. It involved interpreting what was intended when the original estate was sold off as small plots in the 1880s. The parish council referred the whole issue to a national body – the Commons and Footpaths Conservation Society.

Ian Mitchell, Tatsfield History Project

Email: tatsfield.history@talk21.com Tel: 577376

Website: <https://e-voice.org.uk/tatsfieldhistoryproject/>

GLEN DURHAM

Your local, personal and dedicated

ESTATE AGENT

Moving home this spring?

Maximum Exposure, Optimal Results:

Enjoy exceptional service, advanced technology, and nationwide marketing and achieve the best outcome for your property sale with me, Glen and The Agency UK.

Expert Guidance and Support:

As an experienced agent, I will provide personalised assistance throughout the selling process, ensuring a smooth and successful transaction.

Stress-Free Experience:

Let me handle the complexities of selling your property, allowing you to relax and focus on what matters most to you.

glen.durham@theagencyuk.com

07784 124 888

Property Sold Properly

SALES - LETTINGS - PROPERTY MANAGEMENT



PPHS

Professional Plumbing
& Heating Services



**Your 5 Star
Plumbing and Heating Specialists**



BOILER INSTALLATION, REPAIR, REPLACEMENT, SERVICING & SAFETY CHECK

We can advise you of the best boiler to suit your needs, budget and specification as well as installing and maintaining your current boiler. PPHS would recommend an annual boiler service to keep your boiler running at full efficiency, prevent any breakdowns and save you money.

PLUMBING & PIPEWORK

Whether you need a leak repaired, a new tap installed, radiators repaired or fitted or general plumbing and pipe work, we can help.

RADIATORS & POWER FLUSHING

A thorough powerflush will improve heat distribution throughout the property, subsequently lowering household energy bills and increasing system reliability.

BATHROOMS

PPHS can do as much or as little as you need to help you realise your dream bathroom – including helping you choose the materials, sorting out the plumbing and electrics, plastering your walls, tiling and installing the furniture



Valiant

APHE

GreenSource

Google

Mapbox

Scan Me



07702 082 193



peter@professionalplumbingandheating.co.uk



www.professionalplumbingandheating.co.uk

—THE—
LONDON ROAD
FURNITURE COMPANY



5000 sq ft of beautiful furniture and gifts over 3 floors

WWW.LONDONROADFURNITURE.CO.UK



THE LONDON ROAD FURNITURE COMPANY

LONDON ROAD, HALSTEAD,
SEVENOAKS, KENT, TN14 7AA

OPEN 6 DAYS A WEEK (CLOSED WEDNESDAYS)

Tel 01959 533433





RB

ROOFING AND BEYOND

- **New roofs / roof repairs**
- **Flat roofs**
- **Moss & gutter cleaning**
- **All tile repairs**
- **UPVC Fascia soffit gutters**
- **Lead work / lead welding**
- **Chimney**
- **Exterior painting**
- **Fencing**
- **Cladding**

TEL: 07853 567 541

FREE QUOTES

 **RB roofing and beyond**

 **rbroofingandbeyond**

email: rbroofingandbeyond@outlook.com

BASED IN TATSFIELD



Local Electrician

Part P Registered

*

Fully Insured

*

No job too small

*

Free Estimates

07847 395 437



DAVID WAITE PROPERTY MAINTENANCE

Private & Commercial

Mob: 07949 307906

Email: djw2261@aol.com

Hedges Cut. Tree Work

Log Cutting & Splitting

18-Ton Log Splitter

& man available

Grass Mowed. Turfing

Overgrown Gardens

Winter Tidy Ups

Patios, Sheds Erected

Fencing Repairs

Brickwork Repairs

Gutters Cleaned & Repaired

Internal Painting

Fully Insured



**OAKLAND
FENCING**

079 75 79 79 75

OAKLANDFENCING@GMAIL.COM

- ALL FENCING WORK UNDERTAKEN:
- TIMBER • CONCRETE • METAL • GATES • SHEDS •
 - REPAIRS • DOMESTIC & COMMERCIAL •
 - EMERGENCY ATTENDANCE • FULLY INSURED •
 - FREE ESTIMATES •

THINK FENCING... THINK OAKLAND



Mat Pilates

Mixed ability classes, everyone welcome!

WEDNESDAY

9.00- 10.00AM

TATSFIELD WI HALL

THURSDAY

7.30-8.30PM

TATSFIELD WI HALL

FRIDAY

10.00- 11.00AM

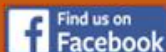
TATSFIELD WI HALL

Contact me for more information: emilydancefirst.co.uk



All types of property
maintenance
and refurbishment
works undertaken.
For an estimate
please call

**Stuart on
07802 888774**



Entre Nous Lingerie

4 London Road, Westerham, TN16 1BD

*Lovely new swimwear and wraps
available - wired and non-wired for
all sizes!*



**Entre Nous is a small independent lingerie shop in
Westerham, owned by Jane and Kate, who have over
20 years of experience.**



**10 - 4 Tuesday to Saturday
www.entrenouslingerie.co.uk
01959 563975**

EXPERT ACCOUNTING & TAX ADVICE

Who we are

Devonshire Green is a team of qualified accountants with over 90 years combined experience. Serving clients nationwide from our idyllic Westerham office, our team includes tax accountants, financial advisers and wealth management experts ready to help with all your accounting needs!



Trusted by thousands



No jargon



Award winning service

What we do

- Personal tax returns – self assessment
- Limited company accounts
- Sole trader accounts
- Management accounts
- CIS for contractors & subcontractors
- Payroll
- Tax planning
- VAT returns
- Bookkeeping
- Wealth management

Let's talk

Tel: 01959 565772

Email: admin@devonshiregreen.uk

Lodges Wood Oast, Goodley Stock Road
Westerham, Kent TN16 1TW



DevonshireGreen
Accounting | Taxation | Financial Planning

www.devonshiregreen.uk



R. THORPE
— HEATING & PLUMBING LTD —

Domestic & Commercial Heating Engineers & Plumbers

- **Boiler Breakdowns, Repairs and Servicing** (All Makes and Models)
- **Boiler Installations and Replacements** (Interest Free Finance Available)
- **Heating Installations and Efficiency Upgrades**
Including Underfloor Heating, Servicing and Repairs
- **All Plumbing Work Undertaken**
- **Air-conditioning and Heat pumps**

Rob and his team cover anything from family homes up to large commercial properties. Based in Biggin Hill and covering London, Kent, Surrey and Sussex.



Call or WhatsApp: **07597 048884**
Email: rob@rthorpeheating.co.uk
Visit: rthorpeheating.co.uk



Elite Global Construction Ltd

Please do not hesitate to contact today about your dream bathroom kitchen or renovation project, your dream is our mission.

kitchen and bathroom specialists

One of our many great reviews:

"Highly recommend Elite Global Construction, we have had a bathroom renovated along with a downstairs toilet and Lobby area, just had a new kitchen fitted and it has been a great transformation..."



@eliteglobalconstructionltd

www.eliteglc.com 07837 646688

Eliteglobalconstructionltd@gmail.com



NEW LIFE CHURCH
BIGGIN HILL

A CHURCH FOR THE WHOLE COMMUNITY

A local church with an international vision

EVERY SUNDAY 10am

Join us for worship and Bible teaching with youth and kids meetings

DURING THE WEEK

- **Connect** Every Monday from 2-4pm
- **Stay & Play** Term time Fridays 10:30am-12pm
- **Youth** Term time Fridays 7:30-9pm
- **Dance fit** Friday 5:30-6:30pm
- **Board games cafe** First Saturday of the month 3-7pm

SCAN ME



FIND OUT MORE

Try Church



www.newlifebh.org.uk
01959 571 667



www.facebook.com/newlifebh

newlifebigginhill

@newlifechurchbigginhill352



DAVID RUDD & SON PLUMBING AND HEATING LTD

- Full central heating systems and boiler exchanges carried out for GAS, LPG and Oil (Kerosene)
- Installers of Worcester, Valliant and Glow Worm boilers with up to **12-year** guarantee
- Kamco Power Flushing
- All types of Plumbing, Heating and Drainage
- Landlord / Homeowners Gas Certificates
- Installation and maintenance of Ground Source Pumps, Solar,
- Under Floor Heating, Cookers and Gas Fires
- Boiler breakdown – Diagnostics and Repairs
- Installation and servicing of Unvented Hot Water Systems
- Full bathroom design and installations

Fast, Friendly, Reliable Service

WRAS Approved Institute of Plumbing
ACIPHE RP



Tel: **01959 577072**

Mob: **07831 641664**

07957 940905

davidruddandson@hotmail.com



EST. 1881

•W•UDEN & SONS•

FAMILY FUNERAL
DIRECTORS



Biggin Hill : 01959 537 130

Petts Wood : 01689 822 291

West Wickham : 020 8777 4444

Bromley : 020 8658 0000

Beckenham : 020 8462 2222



wuden.com



@UdenFunerals



ALEX JONES FUNERAL DIRECTORS

Serving the community since 1996

- OFFERING A CARING AND PERSONAL SERVICE
- BEAUTIFUL CHAPELS OF REST
- HOME VISITS AVAILABLE
- MEMORIAL MASONRY
- PRE-PAID FUNERAL PLANS FROM GOLDEN CHARTER
- AN INDEPENDENT FAMILY OWNED BUSINESS



LINGFIELD
1 East Grinstead Road
Surrey
RH7 6EP
Tel: 01342 832 534

OXTED
92 Station Road East
Surrey
RH8 0QA
Tel: 01883 730 383

FOREST ROW
1 Ashdown Court
Lewes Road, East Sussex
RH18 5EZ
Tel: 01342 822 399

EDENBRIDGE
70 High Street
Kent
TN8 5AS
Tel: 01732 860 047

GOLDEN CHARTER
FUNERAL PLANS



Alex Jones Funeral Directors Limited is an appointed representative of Golden Charter Limited trading as Golden Charter Funeral Plans which is authorised and regulated by the Financial Conduct Authority (FRN:965279).

GC-LIFT 2806 - 1023



Badger Bathrooms



SHOWROOM: Betsom's Farm, Westerham TN16 2DS
01732 464450 www.badgerbathrooms.com



Good Movers

Removals & Clearances

- Removals
- Boxes & Packing
- Storage
- Clearances
- Courier Delivery
- Cleaning
- Probate Service Arranged
- Light Demolition
- Cash Paid for Unwanted Goods

The best way, the only way, the Good way!

0800 024 6183 / 07522 795594
www.goodmovers.co.uk / info@goodmovers.co.uk

Keeping IT Simple

Solving all your technical support worries, calmly and patiently in your own home, by someone who cares

- > New Device Setup
- > Instruction & Tuition
- > Cleaning & Cooling
- > Virus & Malware Removal
- > Hardware Upgrades
- > Remote Support
- > Small Business Support
- > WiFi Routers & Networking
- > Cloud Storage
- > Data Backup
- > Data Recovery
- > E-mail Support
- > PCs & Laptops
- > Printers
- > Smartphones
- > Tablets
- > Televisions
- > Wireless Security Cameras




07375 416 176
dan@kisit.co.uk




MUSSELWHITE

BUILDING, PLUMBING & HEATING



Est. 1979 | Family Run | Professional | Reliable | Honest Workmanship

Call or WhatsApp:

07887 517361

musselwhite.builders@gmail.com

- Plumbing & Heating
- Extensions
- Landscaping & Fencing
- Bathroom & Kitchen Installations
- Roofing
- Refurbishments
- Disability Access
- Glazing
- Carpentry
- Pipework
- Underfloor heating
- Maintenance and Repairs
- Brickwork
- Rendering & Plastering
- Electrical Works

Cheekatrade
Approved member



CIPHE
Construction Industry Payments
Association



WORCESTER
Breach Group





CREST

DEVELOPMENT GROUP LTD

Luxury Home Transformations You Can Trust

Plumbing • Bathrooms • Kitchens • Full Refurbishments

Crafted with precision. Designed for excellence.

At Crest Development Group Ltd, we specialise in high-quality home improvements that combine craftsmanship, style and reliability.

From luxury bathrooms and bespoke kitchens to full property refurbishments and professional plumbing services, our experienced team delivers results built to last.

FREE ESTIMATES AVAILABLE

☎ 0800 047 2611

crestdevelopmentgroup.co.uk

Start your next project with confidence.

Contact us today for a no-obligation quote.

Find us on Instagram & Facebook

📷 @_crest_development_group_ltd_

Checkatrade.com
where reputation matters

THE WASP GUYS Wasp Nest Removal 07761 232470

Local
Friendly
Trustworthy
Service



Fully Insured
100%
Guaranteed
7 days a week

See our Checkatrade customer
reviews at

[https://www.checkatrade.com/
trades/thewaspguys](https://www.checkatrade.com/trades/thewaspguys)

www.waspnestsdestroyed.com

Discover the joy of dance



Twirl your tutu

All dance styles. All ages.

07850 746189/ 07584 064643
www.judithessexschoolofdancing.co.uk



IDTA

**ROYAL ACADEMY OF
DANCE**
REGISTERED TEACHER





Culverhouse & Co.
CHARTERED ACCOUNTANTS
CHARTERED FINANCIAL PLANNERS

LOOKING FOR... AN ACCOUNTANT? A FINANCIAL ADVISER?

We combine experience with a proactive approach; providing strategic advice on areas including business finances, tax planning, and wealth management to deliver long-term benefits.

- ✓ Personalised solutions
- ✓ Accounting & financial planning services
- ✓ Helping you live life the way you want to live it

01689 862211

info@culverhouse-accountants.co.uk

7 High St, Farnborough Village, BR6 7BQ

Tatsfield
Aquatics

Proud members of
Checkatrade.com
Where reputation matters

Pond Maintenance And Landscaping

- Pond Maintenance
- Pond Design & Construction
- Pond Renovation
- Lake Management
- Garden Makeovers
- Fencing, Paving, Turfing

01959 571 828

ian@tatsfieldaquaticsandlandscaping.co.uk



MINI CABS

AIRPORT CARS BIGGIN HILL

YOUR LOCAL

LICENSED MINI CABS

01959 540550

Ibbett Mosely

A name you can trust.

Independent Estate Agents - Selling Homes since 1900



PROFESSIONAL SERVICES

Residential Estate Agency • Residential Lettings
Property Management • Commercial Agency
Valuations • Building Design and Layout
Building Surveying • Town Planning and Development
Auctions - Furniture, Effects, Antiques and Fine Art

28 Market Square, Westerham, Kent, TN16 1FR
01959 563265

westerham@ibbettmosely.co.uk
www.ibbettmosely.co.uk

Offices at

Westerham • Sevenoaks • Otford • Tonbridge • Borough Green • West Malling • London

Sunningvale Service Station

Sunningvale Avenue, Biggin Hill TN16 3TL

01959 573434

We offer a warm welcome and friendly service
whatever your motoring needs



Petrol/Diesel	MOT
Catalysts	Bodywork Repairs
Diesels	Spraying
Exhausts	Insurance Estimates


LING & Sons Ltd
BUILDING CONTRACTORS

BUILDING FOR OVER 50 YEARS

New Builds | Renovations | Extensions


CONTACT Information

 01959 577586

 info@lingandsons.co.uk



www.lingandsons.co.uk

MR Computing

38 years of combined experience in IT

Local, Professional and Family Owned
business since 2005

NO FIX NO FEE & NO CALL OUT CHARGE

- 
- Punctual visits at an agreed time or collection & drop off service.
 - Apple & Windows computer & tablet/phone support for Business & Home.
 - Reliable wireless range improvement for Home & Business.
 - Most work carried out in a one hour visit. Fixed price workshop repairs.
 - Repairs, speedup and maintenance, Data transfer/recovery, Computer malware/virus removal.
 - New computers supplied/set up and made to feel familiar.



&



Windows

**Call Mark
& Sue on:**

01883 730345

OR

0800 6129534

Email:

office@mrcomputing.net



Website - www.mrcomputing.net
Reviews - mrcomputing.net/reviews