

JULY/AUGUST 2026

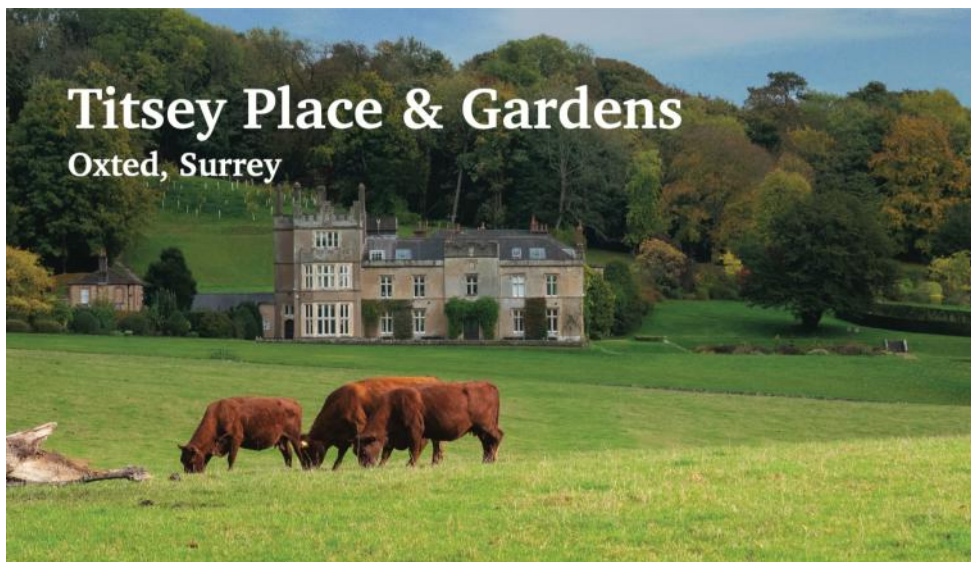
Tatsfield

Parish Magazine



Titsey Place & Gardens

Oxted, Surrey



Come and spend an exciting day exploring our historic manor house and beautiful gardens

Titsey Place, with its stunning garden, lakes, woodland walks, walled kitchen garden and park offering panoramic views, enchants visitors. Enjoy the fine family portraits, furniture, a beautiful collection of porcelain and a marvellous set of four Canaletto pictures of Venice. After touring the house and strolling through the gardens, visitors can enjoy delicious refreshments in our tea rooms.

Open Season: 16 May to 30 Sept 2026

Opening Days: Wed & Sat - All facilities

Sun - Garden & tea room only

Bank Holidays: Open 25 May & 31 Aug 2026

NGS Days: Open 31 May, 28 June, 26 July,
30 Aug 2026

Opening Times: 1pm to 5pm

House Tours: 1.30, 2.30, 3.30pm

Woodland Walks: Open all year round

Info Line: 07889 052461 www.titsey.org



Sheree's Store & Tearoom



Specialty Teas & Coffees

Delicious cakes

Confectionary

Handmade cards

Locally made arts & crafts

Wide range of products

Locally sourced & Fairtrade

Newspapers

PayPoint

Artisan Breads, Pastries, Fresh Fruit and Vegetables Every Saturday

Craft workshops held in house. See our Facebook page for details

Call us on: 01959 928181

Or join us on Facebook

at: 'Sheree's Store and Tearoom'

2 The Parade

Westmore Green

Tatsfield, TN16 2AS



TATSFIELD



Garage Ltd

01959 577347



MOT - Servicing - Repairs on all makes of vehicle.

- Tyres • Batteries • Brakes • Suspension
- Air Con • Clutches • Diagnostics • Welding

Please call Simon or just pop in.

Established since 2014

5-7 Paynesfield Road • Tatsfield • TN16 2AT • tatsfieldgarage@gmail.com



**bands
&
events**

Pool, snooker
& darts
Bingo, quizzes
& sports



Your friendly
local
social

**Mon - Thu ~ 3pm - 11pm
Fri - Sat ~ 12pm - late
Sun ~ 12pm - 11pm**



Tatsfield Village Club
New members welcome

email: tvsecretary@btconnect.com or pop in and see us

 tvsecretary@btconnect.com
or pop in and see us

Tuition

Lady teacher/tutor with 30 years experience offers

one to one tuition.

Coaching to improve confidence and competence.
Proven results

References available

- 7-11 years Key Stage 2 Numeracy and Literacy
- Entrance Exam Practice
- 11+ Practice
- SATs Practice
- Year 7 Booster English



Mob: 0777 351 7063

Limpsfield, Oxted, Tatsfield and Westerham area

**DEIGE'S
HELPING HANDS**



**Home Care Provider
Personal Domiciliary Care**

Affordable and flexible care delivered to your own home.
We have provided care for the elderly for over ten years
Professional, consistent & reliable service
Flexibility - we will work with you to tailor a suitable care plan
that meets your requirements

Personal Care	Social Care Trips
Companionship	Shopping & Laundry
Meal Preparation	Dementia Care
Well being checks	Care Giver Respite

Contact Deige



 07981182773

JAYCY

Painting, Decorating

Free estimates

Nick Walsh

01959 577684

Mobile
07887528264

A25 Taxis

Your reliable Tatsfield taxi
Service for all occasions

Airport transfers
Taxi hire
Occasion/Wedding hire
Corporate hire
School run service (DBS checked)

☎ 01959 575957

✉ A25taxis@live.co.uk



THE CHARTWELL CANCER TRUST CHARITY HOUSE CLEARANCE AND COLLECTIONS SERVICE



Professional – Sympathetic – Reliable

Whether You Are: Downsizing • Decluttering • Moving home • Managing a bereavement
Our friendly team can help with a stress-free collection and house clearance service

Why Choose Our Service?

- Suitable items collected FREE of charge
- Donations sold through our charity shops to support local cancer patients
- Small collections and full house clearances available
- Careful, respectful handling of belongings
- Environmentally responsible approach - helping minimise waste
- Gift Aid available on eligible donated goods, adding an extra 25% at no extra cost to you

To Arrange A Collection **07777 761411**

collections@chartwellcancertrust.co.uk
Scan the QR code

Your unwanted items will support local families facing cancer

The Chartwell Cancer Trust Making a Difference to Cancer Care

The Chartwell Cancer Trust, founded in 2005, supports adult cancer services at Princess Royal University Hospital. Proceeds from donated items help support local cancer and leukaemia patients through The Chartwell Cancer Trust's projects and services.

To find out more contact: **01959 570322**

E: info@chartwellcancertrust.co.uk www.chartwellcancertrust.co.uk





Based in Tatsfield
01959 577718
07946 304087

acaciatreesurgeons@gmail.com

We provide a wide range of tree services:

- Complete Tree and Stump Removal
 - Thinning and Pruning
 - Crown Reduction
 - Lifting and Reducing
 - Site Clearance
- 24 Hour Emergency Call Out
 - Chippings Delivered
 - All fencing undertaken

**NPTC QUALIFIED
& CHAS REGISTERED**

Call us today for a free estimate

Celebrating over 80 years of professional tree care

BIGGIN HILL PLASTERING



**NO JOB TOO
SMALL FREE
ESTIMATES**

07710622237

or

01959540615



- Community physiotherapy for older people -

Jennifer Willis

BSc (Hons) Physiotherapy MCSP, HCPC

Fallen recently? Suffer with pain?

Balance and mobility not as good as they used to be? Lost confidence when moving around?

Suffer from a Stroke, Dementia, PD, MS, frailty?

Feel weaker or fatigued after an episode of COVID-19

..then East Surrey Physio can help

Jennifer will visit you in your own home, residential home, or nursing home for your physiotherapy sessions.



07939 461 416

✉ jenniferwillisphysio@yahoo.com

🌐 www.eastsurreyphysio.com



Warlingham - Oxted - Tatsfield - Caterham - Woldingham



Westerham Heights Garden Centre

What We Offer:

- A wide range of plants, shrubs, and trees
- Seasonal flowers to brighten your space
- Expert advice from friendly, local gardeners
- Quality tools, seeds, and soil
- Logs and calor gas
- Fencing

Gift & Homeware Shop

Looking for something unique?

Step inside our homeware shop to discover:

- gifts for every occasion
- Stylish decor and one-of-a-kind treasures
- Locally made and handcrafted items
- Frenchie paint



01959 571545



westerham.heights@yahoo.com



Main Road, Westerham Hill,
TN16 2HW

Your One-Stop Shop for Garden Gifts,
and Good Vibes



6 Westmore Road
Tatsfield
TN16 2AX



Gift Certificates
available
for all therapies

Lorraine Maddison

McTimoney Chiropractor
07817 548133
rainymad@icloud.com

Other therapies available including reflexology

www.sourcehealthclinic.co.uk



Pre School for children 2+

Tatsfield Village Hall

Funding available for 3 & 4 year olds
and some 2 year olds

Monday to Thursday

New opening times
8:30am ~ 3:20pm

Friday

8:30am ~ 1:00pm

Morning, afternoon and whole day sessions
available

~Clubs included in some sessions ~
Science Club, Boom Arts Academy, Gardening Club & Messy Club

Phone : 01959 540775

Email: office@littleacornstatsfield.co.uk
www.littleacornstatsfield.co.uk

Charity number: 1024480



ARE YOUR LOCKS BEHAVING BADLY?

A Local Trusted Family Business Since 1989
We Value Old Fashioned Customer Service

Christopher
THE LOCKSMITH

 Specialist in UPVC & Wooden Doors

 No Call Out Charge  All Work Fully Guaranteed

 No Fix No Fee  10% Senior Citizen Discount



For More Advice & Help
Call Christopher:

07772 111 222

www.christopherthelocksmith.co.uk



IQ Wealth Management



INVESTMENTS



PROTECTION



PENSIONS

As a financial advice firm, we provide advice on a wide range of financial matters. From investment advice to retirement planning and managing your estate, we ensure as much as possible goes to the people you want to benefit from your hard work. Our initial 45 minute meeting is free, either at our offices in Tatsfield or your home.

01959 571300

IQ Wealth Management, Aileen McHugo Building, Westmore Green, Tatsfield TN16 2AG

Approver Quilter Financial Limited 15/02/2024

SHUTTERS

HARDWOOD - VINYL - FAUXWOOD
63mm or 76mm or 89mm Louvres
Clear View, Centre or Offset Tiltrods
Numerous colour options



BLINDS



Verticals | Rollers | Venetians | Romans | Curtains | Pleated

FREE Professional design advice on all of our products
Appointments in the comfort of your own home - at times that suit YOU

For SHUTTER Quotes
Please Email:
info@benasa.net

BENASA
The difference is in the detail

To discuss your requirements for BLINDS
Please Call:
01959 509 179




The right choice for your child

We believe that every child is made to live an extra ordinary childhood, that they can accomplish anything, with the right teacher and environment. With over 100 years teaching experience, Monkey Puzzle Tatsfield is more than just an education, it is an environment where life skills, good manners, caring for each other and bonds are made for life.

Monkey Puzzle Day Nursery Tatsfield
 Old School, Church Hill, Tatsfield, Surrey TN16 1JX
Call 01959 928 427
www.monkeypuzzletatsfield.co.uk

  @monkeypuzzletatsfield





CLASSES AT TATSFIELD

every **FRIDAY**

AWARD-WINNING PERFORMING ARTS SCHOOL

WE'RE THE ONLY SCHOOL IN SOUTH LONDON OFFERING STREET DANCE, BREAK DANCE & FREESTYLE EXAMS WITH THE IMPERIAL SOCIETY OF TEACHERS OF DANCING (ISTD) – WITH A 100% PASS RATE AND 100% HONOURS.

Tots Boom Street dance: 4.15-4.45pm
 Tots/LJ Boom Musical Theatre: 4.45-5.15pm
 Lower Junior Street dance 5.15-6.00pm
 Boom Theatre & Singing 6.00-6.45pm
 Junior/ UJ Boom Street dance 6.45-7.30pm





SATURDAY AND OTHER WEEKDAY CLASSES AVAILABLE AT SANDERSTEAD, SHIRLEY AND KENLEY

BOOK NOW: WWW.BOOMARTSACADEMY.COM



Scan me to book a class!



Hazelwood School

www.hazelwoodschool.co.uk
01883 733841

Dare to
IMAGINE



Dare to break down the conventions of the everyday
and *discover* something new.

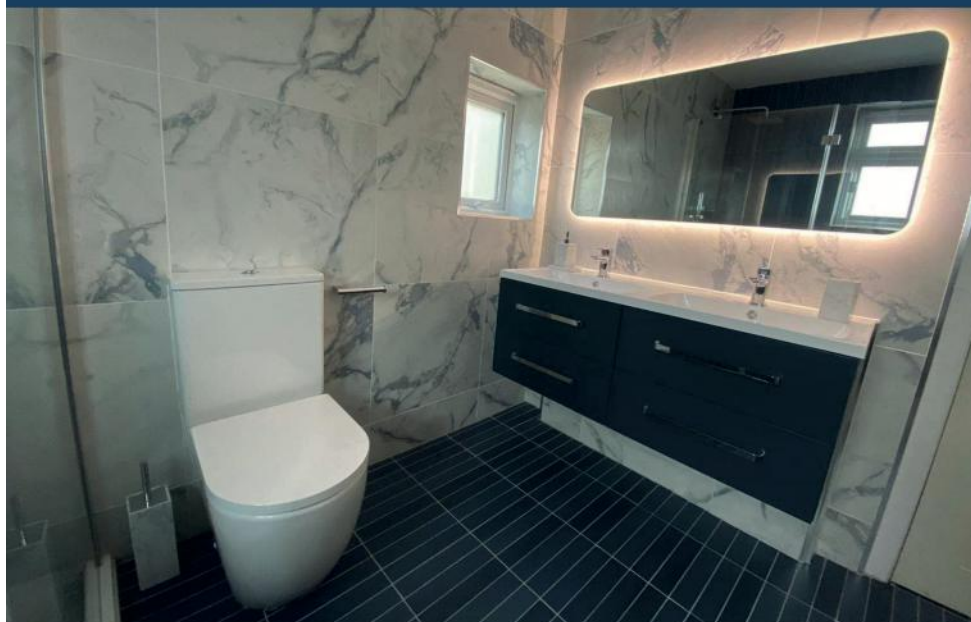
Discover Hazelwood, an exceptional prep school for children aged 9 months to 13 years, nestled in 25 acres of Surrey woodlands, offering one-of-a-kind learning opportunities, state-of-the-art facilities, and boundless possibilities.

Discover more by booking a tour today.
Admissions@hazelwoodschool.com

   @HazelwoodSchool



LILLEY'S BATHROOMS



Start Your Dream Bathroom Today

At Lilley's bathrooms we pride ourselves in providing our customers with a professional service and high levels of expertise with many years design experience. We use quality products from leading, reputable manufacturers. Showcasing a variety of styles, our showrooms provide an abundance of bathroom inspirations, with realistic working bathroom displays.

A free Design Service | Free Measure Up | Free Local Delivery

The use of 4D software Virtual Worlds, where you can "step in" to your space that has been created before the work begins

The Studio

66-70 Footscray Road, Eltham, London SE9 2SU

0208 8507179

The Gallery

157 Main Road, Biggin Hill, Kent TN16 3JR

01959 572000



lilleysbathrooms.co.uk

Tatsfield Aquatics & Reptiles

Tatsfield Aquatics Ltd

Approach Road

Tatsfield

TN16 2JT

01959 571828

Info@tatsfieldaquaticsandreptiles.co.uk

www.tatsfieldaquatics.com

Retail - Landscaping - Maintenance



RST Glass and Glazing Ltd

14 Rosehill Road, Biggin Hill, Kent TN16 3NF

01959 571200

✉ **info@rstglassandglazing.co.uk**

Windows, door & conservatories

Double glazed units

Misted and broken units

Handles, hinges and locks replaced

Glass table tops cut and polished

Patio door wheels/runners

Trade counter

Burglary damage repairs

All insurance work

Contract Glazing



FENSA

APPROVED
WINDOW & DOOR INSTALLER



YOUR SPACE | SPOTLESS | ALWAYS

CLEANING SERVICES

Our local house cleaning team will ensure your home is always in immaculate condition, ready for you to relax and enjoy.

Call to book your regular weekly, fortnightly or monthly clean



07517 175 872



Video Evolution
VIDEO LED MARKETING

Call Now on 01959 447525

YOUR LOCAL VIDEO PRODUCTION COMPANY

VIDEO

PHOTO

DRONE



SPECIALISTS IN BUSINESS OVERVIEW VIDEOS, PRODUCT RELEASE, SERVICES EXPLANATION & VIDEO TESTIMONIALS

Discover how we can help your ideal, local clients, find you online when they need your service

CONTACT ANDY ON: 01959 447525 | andy@videoevolution.co.uk



Tatsfield Martial Arts

JUDO, JU JITSU & COMBAT FITNESS

Head Coach: Adam Plinston

Judo 6th Dan / Ju Jitsu 4th Dan. UKCC Level 2 Coach

Club coaches are first aid trained, DBS checked and insured via NGBs
Children and adult classes, from age 4+ on Wednesdays, Thursdays,
Fridays & Saturdays

Gain confidence. Learn self-defence. Have fun getting fit!

www.tatsfieldmartialarts.com

07956 956095

tatsfieldmartialarts@gmail.com

Private Guitar and Bass Lessons Based in Tatsfield

Experienced tutor with 20+ years experience

Suitable for all ages and abilities

No instrument required, you can use ours!

Learn to play your favourite songs, learn theory or
work towards your grades



**20% OFF YOUR
FIRST LESSON
WHEN YOU
QUOTE 'TPM'**

Playing music relieves stress, boosts brain power and improves confidence!

Email: enquiries@mammothmusicacademy.com

Find us on Facebook & Instagram @MammothMusicAcademy

Mobile Hairdresser & Gel Nail Manicures

Based in Tatsfield

30 Years Experience

Kate

tel: 01959 573816

mobile: 07970 012194

Fully Insured

GELUX
PROFES



ADVERTISE HERE!

TO OVER 800
TATSFIELD HOUSEHOLDS
Tatsfieldmag@gmail.com



BEAUTY BY

Sarah St John

TATSFIELD

Permanent eyebrow makeup

Temple Spa glow up facials

Length, volume, and lift lashes

Nail designs shellac & polishes

Manicures & pedicures

Waxing & tinting

Please contact me for a FREE consultation

Sarah St John: **07946 343 067**

25 Years experience - Fully qualified & insured

Mobile Chiropodist

Chiropody undertaken in the
comfort of your own home



Mandy Gifford

M.Inst.Ch.P, H.P.C. registered

Registered Member of the
Institute of Chiropody
and Podiatry

Mob: 07944 763045



FITNESS CLASSES FOR EVERYONE



This is a 60 minute class which has been described as the strength & conditioning of ballet, and can be distinguished from other group fitness activities by the use of a ballet barre and its incorporation of movements derived by ballet.

CLASSES:

£12 PAYG or
£40 per month

Barre with Fi

Tuesday's: 6.15pm - 7.15pm

Thursday's: 6.15pm - 7.15pm

Tatsfield Village Hall
Westmore Green,
Tatsfield, TN16 2AG

For more information:
check out our website www.wellnesswithfi.co.uk
call me 07801 556 069

Produced for the Village by the Parish Magazine Committee under the authority of Tatsfield Church.

Editors • Tara Barry and Tracey Syrett

Chair • Debra Elsdon

Treasurer • Madie Langford (577114) **Distribution Managers** • Jim and Ruth Yeeles (577489)

Advertising Manager • Sarah Tait **Production** • Ruth Yeeles

CHURCH CONTACTS

St Mary's Church Office (Thurs 9.30-13.30)

Admin: Steve Tatler, The Parish Office, High Street, Limsfield RH8 0DG.

Phone 01883 712512 / email stmoffice.lttm@btinternet.com.

Team Rector: Revd Helen Cook email: hjwcook@yahoo.co.uk

Curate: Debra Elsdon email: curate.lttm@gmail.com

Wardens: Marjory Broughton (01959 541059) / Chris Hancock (01959 577622)

St. Mary's Church Hall Bookings • Sheila Cook (577443)

COUNCIL CONTACTS

Parish Council: Clerk • Aileen McHugo Building, Westmore Green, Tatsfield TN16 2AG
clerk@tatsfieldpc.org.uk (07483 337461)

Chair • Kim Jennings email: kimjennings@tatsfieldpc.org.uk (577328)

Website • www.tatsfieldpc.org.uk

Tandridge District Councillor • Martin Allen, 38 Paynesfield Rd, Tatsfield TN16 2BG (577201)

Surrey County Councillor • Vacancy

OTHER CONTACTS

Village Hall Bookings Secretary • Helena Garcia-Mcleod (bookings@tatsfieldvillagehall.org.uk)

W.I. Hall Bookings • Pat Walsh (01959577684)

Parish Room Bookings • (07483 337461) email clerk@tatsfieldparishcouncil.org.uk

Tatsfield Primary School Head • Rachel Jewitt (577356)

Tatsfield Village Club • (577330)

Furze Corner Bookings • 07483 337461 clerk@tatsfieldparishcouncil.org.uk

Doctors • Stock Hill Surgery (580011) • Westerham Surgery (564949) • Oxted Medical Centre (01883 734000)

Village Website: www.tatsfield.org.uk

MAGAZINE CONTRIBUTIONS

We welcome contributions from village organisations and individual residents but reserve all editorial rights. We welcome letters commenting on items in previous issues or on anything else. Anonymous submissions will not be accepted. Organisations must include contact details in their submission, which will be published. Copy date for the Magazine is normally 16th of the preceding month, except for July/Aug and Jan/Feb double issues. Ideally contributions should be sent as a Word attachment by MIDDAY on the copy date in an email to: tatsfieldpm@gmail.com. Alternatively post to: Tatsfield Parish Magazine, 20 Shipfield Close, Tatsfield TN16 2AU.

Enquiries concerning advertising or loose inserts should be made to Sarah Tait (tatsfieldmag@gmail.com). All loose inserts need to be booked and approved at least ONE MONTH in advance of insertion.

Small Ads These are accepted only from Tatsfield or Titsey residents (No Trade) and are free of charge (Max 10 words plus phone number.) We will include them in the next issue space permitting.

Calendar Dates Our calendar usually covers six weeks or more from publication so please give us your dates in good time. If you don't want your event to clash with others why not check with us early?

Advertisements We take no responsibility for the goods and services advertised in the magazine.

Cover image: Mark Stokoe's hot air balloon, courtesy of Alice Syrett.

LETTERS

Dear Editors, Regarding East Surrey Council 2027 I wrote to the Leader of East Surrey Council Cllr Steve Wotton to question the decision of the makeup of major roles in East Surrey Council based on the fact that local representation was acknowledged as being diminished under the new system. Having learned that the makeup of the new East Surrey Cabinet members and heads of Statutory roles did not include anyone from Tandridge in to any senior posts, I wrote to ask how he felt that this was a fair and proportionate representation throughout the East of Surrey and Tatsfield & Titsey specifically within the new East Surrey Council .

Steve explained they (the Liberal Democrat administration) had internal elections for the executive roles but was very mindful of how the various parts of East Surrey are represented in the new council and in the various committees, including the Executive. He went on to say it was his, and his group's, intention to expand roles and responsibilities, in part to broaden participation of the whole LD group and also of the wider council itself. This can be achieved through the full suite of committees that will come into effect from next year and also via the establishment of deputy executive roles.

He further stated his keenness to establish strong links between the new council and existing local bodies, such as Town and Parish Councils. In their manifesto they are committed to a strong programme of localism, this will be developed in the coming months as we get closer to vesting day. ***We will just have to wait and see how this works out for us all!*** Cllr Martin Allen



Autumn Charity Music Concert

Join us for an evening of wonderful live music featuring a variety of genres and talented local performers.

Date: Saturday 26th September 2026

Time: 7:30pm - 9:00pm

Venue: St Mary's Church, Tatsfield, TN16 2JX

Tickets: £12 per person

Includes a complimentary drink and refreshments after the concert.

Come along, enjoy the music, and support a great cause as we raise money for Chartwell Cancer Trust and our beautiful Village Church.

For tickets and enquiries please email/text Chris or Marjory:

chrishancock12@outlook.com / 07957 273225

marjorybroughton@gmail.com / 07790 241070

EDITORIAL

*For the beauty of the earth,
for the glory of the skies,
for the love which from our birth
over and around us lies.*

*For the wonder of each hour
of the day and of the night,
hill and vale and tree and flower,
sun and moon and stars of light*

*Christ, our Lord, to you we raise
this, our hymn of grateful praise.*



The words to this popular hymn express something of the feeling that we all have – whatever our faith tradition or none – when we are in the presence of Nature.

The wonder of the view from the top of our North Downs; the scents and sounds of summer. And the glorious night sky – so ably navigated by our guest contributor, Brian Mills FRAS; which I always read with interest and not much comprehension!

The writer – with the unlikely name Folliott Sandford Pierpoint – was inspired by the landscape around his native Bath in the 1860s. And in the 1970s John Rutter’s setting brought a rather more jaunty feeling to the words. Do check it out – it’s really lovely.

Whether we have clouds, rain or sunshine over this summer season we can all be thankful for our village landscape and for the many wonderful people who work so hard to maintain and enhance its beauty.

I hope to bump into you over the summer months – at one of the many events you can read about elsewhere in the magazine or at our Sunday Teas at St Mary’s Millenium Hall. And whatever you do and wherever you go – I hope you can echo the thankfulness of this hymn.

Blessings, Reverend Debra

TATSFIELD ONLINE

Village website: www.tatsfield.org.uk

Village facebook page: search for ‘Tatsfield Village’ on facebook

Tatsfield Talk facebook group: search for ‘Tatsfield Talk’ on facebook, and ask to join to be able to view and post. **Twitter:** @tatsfieldtweet



Summer Teas at St Mary's

Thank you for coming to our lovely churchyard and supporting the upkeep and the ministry of St Mary's.

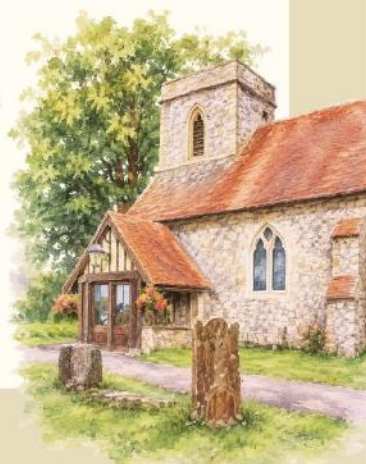
The church building is open during the day should you wish to explore or spend some moments in quiet reflection.

A short service of prayer will be offered to anyone who wishes to come along on the following dates at 5pm.

Sundays	'Pop in and Pray'
5 th July	Praying for Peace
2 nd August	Praying for Travels and Staying at Home
6 th September	Praying for children and young people at the start of the new year
27 th September	Thanks for a Summer of Tea and Cake!

Blessings

St Mary's PCC
and Reverend Debra



TATSFIELD PARISH COUNCIL

The Parish Council met on 8th June when we welcomed Councillor Jacquie Thomson from Surrey County Council and Shadow Councillor Jeremy Pursehouse from East Surrey Council following the recent elections.

PLANNING

TA/2026/396 Broomlands Farm, Broomlands Lane, Limpsfield, Oxted RH8 OSP

Demolition of existing buildings to provide 6 padel courts (3 under cover) and conversion of existing buildings to provide a new club house and member facilities together with parking and landscaping. The Parish Council heard representations from the applicant and also a local resident speaking on behalf of other local residents. Although in design terms, the proposals for the layout, built form and adjustments to existing farm buildings appear reasonable, there are serious concerns about the non-sustainable location of these proposals given the lack of public transport nearby and the long narrow access lane (some of which is part of Tatsfield Parish) to the site. They are not in line with TDC planning policy. Also, there are potential dangers associated with visibility and access from the main A25 road given the anticipated increase in traffic, including commercial.

Recommendation: Objection.

FURZE CORNER At the time of writing, we are still waiting for the outcome of CIL grant discussions at Tandridge DC relating to our Furze Corner upgrade project. Jason Syrett attended the CIL committee meeting on 2nd June and a decision is due on 18th June. So, hopefully, by the time you read this we will have had confirmation of the additional monies requested.

MUGA Following the grand opening of the MUGA, Sue Dowse reported that the whole project has now been completed. Two pickleball sets have been left and can be accessed via a code after texting the number on the notice by the court. Also, one of the tennis nets will be in place until the autumn. The other court will be used for football and netball. A locker is being put on the side of the AMB to store equipment. Sue reminded us that netball is regularly played on a Wednesday evening from 7.30pm. All are welcome so just turn up if you would like a game.

TATOL BED REFURBISHMENT By the time you read this hopefully the Tatol bed will have been completely restored. Work is planned for the second week in July.

POLICE From police reports, one serious incident had occurred recently when significant damage was caused to the greens at Parkwood Golf Club, apparently by a number of youths on electric bikes. Other reported incidents were mainly about increased levels of fly tipping. Most recently, Martin Allen organised an excellent meeting with Rob Staplehurst, the new Tandridge Borough Commander at Surrey Police. He showed a great deal of interest in our village and will hopefully be more involved with local issues as and when they arise. As always, he again emphasised the need for residents to report, report, report!

APPLICATION TO BUILD 84 HOMES ON SHIP HILL Since the Parish Council meeting we have now heard that the application by Chartwell Ltd to build 84 homes on Ship Hill has been submitted to TDC and validated so it is now formally out for public consultation with **representations to be submitted by no later than 18th July** – just a few days after you will receive this edition of the magazine. The planning reference number is 2026/559 which is easy to access on the TDC website so, if you haven't done it already, do please get your comments in as soon as possible. The PC will be considering the matter at its next meeting on Monday 13th July. It is also vital that all those who previously responded to the Chartwell local consultation process should do so again, this time to TDC.

PLAYGROUND WESTMORE GREEN The **GoFundMe page to raise funds for the new childrens' playground** on Westmore Green is still open for contributions and we do still need more public help to reach our target of £10,000. Thank you to all those who have contributed so far...

BINGO NIGHT And finally, a date for your diary, **Thursday September 10th The Olde Ship** pub is putting on a **Musical Bingo Night** which will be great fun and extremely entertaining.

David Pinchin, Vice-Chairman, Tatsfield Parish Council

TANDRIDGE DISTRICT COUNCIL

I am pleased to say that all three of our **newly elected representatives** have interacted with the village in one way or another, either at Parish Council meetings where they have met our Councillors or have come to see and financially support the compost site and the allotments and the Not So Young Club from the Surrey Council Members Funds. As they grow into their roles, I hope they will learn more about Tatsfield so that they can understand what our needs are and will be going forward.



New SCC Jacquie Thomson and husband John enjoying tea at the compost site with Jon Allbutt, Sue Reed, myself, Mike Wiliams and Alan Armitage.



Rob Staplehurst with ESC Jeremy Pursehouse, TPC David Pinchin, SCC Jacquie Thomson, TPC Sue Dowse and myself.

I am also pleased to say that the **newly appointed Tandridge Borough Commander** at Surrey Police **4862 Rob Staplehurst** Inspector joined myself Cllrs Pinchin and Dowse from the Parish Council and both SCC Jacquie Thopson and ESC Jeremy Pursehouse in the village where we talked about policing and the need for improved communication. Rob pointed out that we remain a very low crime area, with very few reports being received from us over any matters that arise. So, the message here is “report report report”, to keep the intelligence flowing. Pleasingly we had

our local PCSO Georgia Kidd come to see residents late June and she will be back early in July. Rob leads a team of 2 Sgts 6 PD's and 6 PCSO's whose main functions are on burglary, stolen vehicles, shoplifting and rural crime.

So that it is open and honest I met with the **Applicant for the 85 houses on Ship Hill** and outlined much of the concerns that I felt the village would have. I pleasingly felt that they listened and had taken a lot of this into account when building their application. I also went to see a Chartwell development in Lingfield and was really impressed with the build and the designs. When putting together the Neighbourhood Plan it was clear that the building of new dwellings v the need to build for the younger generation of Tatsfielder's was pretty evenly split so there are arguments both ways that would need to be thought through. The Application is now live on the Council website under Ref 2026/559 with comments until 18th July; so if you feel strongly either way, please send in your comments so that the Officer can understand the thoughts from Tatsfield on this application.

Tandridge District Local Plan 2024-2044 consultation opening soon We are now consulting on proposals for the new Local Plan. **The consultation opened on Monday 6th July 2026 and will run until Monday 17th August 2026.** All documents, maps and information are available online at www.tandridge.gov.uk/localplan. There are many opportunities to come and talk to Officers and local councillors at a series of local events across the district where you can: view submitted sites; ask questions; speak to planning officers and local councillors; but most importantly share your views.

You can drop in to any event during the consultation period, it starts in Warlingham on the 6th July in the library between 2–8pm where you can see the papers covering Tatsfield. But if you cannot make that we will be holding our own Event in **Tatsfield on Monday 20th July from 3.30pm-8pm. In the Aileen McHugo Building. Come along and have your say.** You can also join a live Q&A session where Officers will be hosting a Q&A session where a panel will answer questions on the Local Plan. All details can be found on the Council's website.

So, there was I thinking that my role would decrease as we edge towards the new East Surrey Council but that does not seem to be the case, there are still independent group meetings, Group Leaders meetings, meeting with Officers Committee meetings and Council meetings to attend, whilst trying to ensure that business as usual happens within Tatsfield and Titsey.

I am sitting typing this in a darkened room on what will probably be the hottest day of the year and, despite the above, my thoughts are heading towards enjoying the summer when I do get a break, So do enjoy the good weather and whatever it is you are going to do to enjoy your summer, and I will be writing again updating you all again in September where I hope many things will have become clearer.

If you think I can help you with anything to do with the Tandridge District Council or anything else please do not hesitate to contact me.

Cllr Martin Allen Tel: 01959 577201

Email: cllr.martin.allen@tandridge.gov.uk or martin_allen@talk21.com

CLAIRE COUTINHO MP

The summer fete and festival season is definitely upon us. At the time of writing, I've just come back from a fantastic day out at the Limpsfield Chart Fair with my family, a must-go in my calendar. It was such a wonderful afternoon and a brilliant display of community spirit. My praise, as always, goes out to the volunteers for all their efforts.

I will be opening a new round of grants for the Friendship Project in July, so if you're running a group aimed at tackling loneliness here in East Surrey, please do get in contact if you think we can help.

Regular readers of my columns will know I am fighting against local unauthorised traveller development. I recently met with the Minister for Housing and Planning, Matthew Pennycook, and I think he is beginning to grasp the scale of the problem. What we need now is action. I'm pushing the Government to look at banning retrospective planning, tightening up loopholes, possible restrictions on the delivery of construction materials, and stronger powers for the police and councils.

This month I'm kicking off my Summer Surgery Tour, bringing my surgery to you in towns and villages across East Surrey. This will help ensure that, no matter where you live in our constituency, you will have the chance to meet me. This year's tour will be taking place between Thursday 16th July and Friday 7th August. If there are any matters I could help with, or any issue you would like to raise with me, then please get in touch with my office in Lingfield either by telephone on 0207 219 5972 or by email at claire.coutinho.mp@parliament.uk.

Diary date: Claire will hold her surgery in Tatsfield on Friday 17th July. Further details with location and time will be sent out to all households by her constituency office.

What Next?

Looking for a job?

VOLUNTEERS OFFER THEIR PERSONAL EXPERIENCE TO FACILITATE YOUR JOURNEY

Support on a one to one basis includes:

- *CV and job applications*
- *interview preparation*
- *deciding career objectives*
- *finding relevant sectors/companies*



Contact: jobcluboxteddistrict@gmail.com

An initiative of Churches Together Oxted District and Titsey Rotary Club



1ST TATSFIELD SCOUTS

Tatsfield Scouts have been making the most of the lighter evenings with grass sledging, adventure trails and expeditions on electric bikes. We are also thrilled to be able to say that Tatsfield Scouts are going international! Some of us are heading to Switzerland for Surrey Scouts KIX 2026 to go walking in the mountains, paddle down the Aare River, attempt the high ropes and join an international campfire, with potential for plenty of chocolate and cheese along the way!



And we are also very excited that for the first time ever in 1st Tatsfield Scouts' history one of our young people will be attending the World Scout Jamboree in Poland in 2027 which is a tremendous achievement and we are very proud of them.

So many things to get excited about not only for our young people but also our Leaders who are lucky enough to be able to join them in these adventures.

COULD YOU BE TATSFIELD'S NEXT SCOUT LEADER?

1st Tatsfield Scouts are looking for a new Scout Leader to join our team and we're keen to find someone to step forward soon.

Our current leader, Matt, will soon be stepping down after 10 years with us so we're looking to find someone who can help ensure our young people continue to have access to our own Scout Group. The good news is that you won't be doing it alone. You'll be supported by a friendly, experienced team, and Matt will help ensure a smooth handover so you won't be thrown in at the deep end. Unless we're canoeing, of course.

You don't need any previous Scouting experience as we provide training and support. What matters most is enthusiasm, energy and a willingness to help young people discover their potential, build belief in themselves and above all have fun.

At its heart, being a Scout Leader is about helping young people try new things and discover what they're capable of. One week might involve games or a campfire; the next, organising a simple outdoor activity or hearing a wonderfully inventive explanation for why something didn't quite go to plan. No two meetings are ever the same and you will learn a lot yourself along the way.

We know life is busy - juggling jobs, families and everything else that keeps us occupied. Yet many find that a couple of hours at Scouts is a welcome break from the usual routine. It's a chance to do something different, spend time with great people and be part of something that really matters.

We're looking for a new Scout Leader but would also love to hear from anyone interested in helping in other ways, whether regularly or from time to time. If you've ever thought about getting more involved in the village this is a really rewarding way to do it and you will quickly find that Scouts is a place to belong.

"I originally offered to help while my children were in Scouts and somehow I'm still here years later. It's been one of the most enjoyable and rewarding things I've done."

Matt Regan, Scout Leader

We have a brilliant Scout hut, great resources and fabulous Scouts. If you're even slightly interested, please have a chat with **SJ Mumford** on **07966 227202** or **tatsfieldscouting@gmail.com** to see if it's something you'd enjoy. There's no obligation at all.



**PHOTO OF THE MONTH
COURTESY OF
DR ASLAM AKHTAR**

A "Painted Lady Butterfly". These arrived in amazing numbers to feast on our perennial wallflower (Erysimum Bowles mauve). This evergreen hardy wallflower was worth growing just for the clouds of painted ladies that it attracted this year!!

Forest Church

Join us for Forest Church, a fun and welcoming outdoor experience for families!

Every Thursday:

11:00am – 12:30pm

06/08/26 - Paths and Journeys


13/08/26 - Planting Seeds & Building a Bug House

20/08/26 - Painting Rainbow Stones & Nature Play

27/08/26 - Picnic & Sharing Our Forest Church Experiences

Each week is centred around a Bible story, followed by exciting outdoor activities for all ages. We finish with a drink and a biscuit, giving everyone a chance to relax and chat together. Come along, explore nature, make new friends, and discover Bible stories in a fun and engaging way.

Everyone is welcome!

 **St Mary's Church Tatsfield TN16 2JX**

Please **Email** us to register:
forestchurchtatsfield@gmail.com

We look forward to seeing you there!

LITTLE ACORNS PRESCHOOL



This year as part of our Father's Day celebrations, we were joined by Owen Longhurst- AKA The Fun Football Factory!

Parents & Grandparents were invited for a morning of fun, football focused games to enjoy with their children and had great fun working together as teams! At Little Acorns, The Football Fun Factory is with us every Wednesday afternoon - included within our session!

We have also enjoyed spending lots of time learning through play in our outside area, as the weather has been so nice!

The children explored beach themed activities and role plays too. We played with bubbles, body boards, rubber rings, buckets and spades, a ball pit pool and an inflatable boat!



The Little Acorns Team

NOT SO YOUNG CLUB

Bingo was the theme at our last meeting and Neil is certainly becoming an expert caller. After a hearty curry with all the trimmings and a light dessert everyone had their eyes down for 'two little ducks and legs eleven!!' Oh and of course we shared Pam's delicious cakes.

In July we are heading to the coast for our annual day trip to the seaside. This year we are off to sunny Worthing, for a light lunch in a seafront (well almost) hotel and a wonderful wander around this traditional seaside town.

In August we will be hosting our annual garden party/barbecue so anyone thinking of joining our little club will need to contact me to be advised of the venue.

We have received a generous grant from the Parish Council to buy a credit payment machine, this will ensure we can accept card payments at our fundraising events. Everyone would like to thank them for their continued support it is greatly appreciated.

Last month we held a cinema night in the WI Hall and everyone had a great time watching The Greatest Showman.

A big thank you again to everyone who supports our club we could not organise as much as we do without your support. Our meetings are always the second Tuesday of the month please contact me if you would like to join us.

Keep safe. Sue Dowse, notsoyoung100@gmail.com, 07816110929

MONKEY PUZZLE DAY NURSERY



The children have loved spending so much time in our garden, due to having such amazing weather lately! They have been embracing the outdoors by collecting natural resources

and using it for inspiration to create art and activities with. Like decorating lots of rocks to make a kindness path in our garden, coming up with words of affirmations to write on them that make us feel good!

We continue to be looking at various artists for our artist of the month, all that take inspiration from Mythology! The children across the nursery have loved creating fairy gardens, pinch pots and using their imagination to explore dragons, fairies and lots more!



FOREST SCHOOL HOLIDAY CLUB

We have spaces available for 5–8-year-olds to join in the summer holiday: 27th and 29th July; 4th, 6th, 10th, 12th, 18th, 20th, 24th, 26th August! For any more information please feel free to contact us.

ARE YOU LOOKING FOR CHILDCARE?

We offer a high standard of care to children aged 3 months to 5 years old. Providing a range of fun and exciting activities, both indoors and outdoors all year around, exploring our local environment and all it offers on local trips, celebrating all traditions and cultures.

We have spaces available here at Monkey Puzzle Tatsfield, if you are interested and want to book a tour of the nursery, please contact us:

Phone: 01959928427 Email: manager@monkeypuzzletatsfield.co.uk

TATSFIELD PRIMARY SCHOOL SUSTAINABILITY

Every year at Tatsfield, children take part in 'Enrichment Week'. This is a week of learning based on a whole school theme and this year the children focussed on 'sustainability'. Every class teacher led a project with their own class and then children spent time in each class with their house teams to take part in a separate project.



Children took part in art, music and teambuilding activities and enjoyed the chance to work with children in different year groups. One of the activities led by Mrs Colegate resulted in a pupil being awarded a regional prize as part of a competition led by Southern Water. Children had to create an animal that would have environmental impact and help save the planet.

The PTA kindly supported a special visit from a VIP guest in the middle of Enrichment Week – Montel Douglas (Fire, the Gladiator) spoke to the children about resilience and challenge and following dreams and aspirations. It was an inspiring visit!

The end of the week culminated in a dance performance on our school field with an audience of hundreds of parents, grandparents and family members! The dance performance incorporated songs and music about our planet, the environment, recycling and showcased the voice of David Attenborough, who celebrated his 100th birthday this year.



ST MARY'S MATTERS

SUNDAY SERVICES Our main Sunday service with hymns is at 10am followed by refreshments in the Millennium Hall. All are welcome. On Sunday 2nd August we welcome back Revd David Butlin, one of our visiting Clergy prior to the arrival of Curate Revd Debra Elsdon.

HOLY COMMUNION FOR THE SICK AND HOUSEBOUND Please contact Revd Debra at curate.lttm@gmail.com



PERSONAL PRAYER REQUESTS We would love to support you in prayer. Please add your request to the Prayer Request Book near the Baptism Font, or email stmoffice.lttm@btinternet.com.

LIFE EVENTS For enquiries regarding baptisms, weddings, funerals, burials and the interment of ashes please contact stmoffice.lttm@btinternet.com.

ST MARY'S SUNDAY TEAS Our ever-popular Teas season is underway on Sundays from 3pm to 5pm in the Millennium Hall and continues until the end of September. Visitors old and new are all very welcome to join us and enjoy delicious cake with tea or coffee.

5PM SUNDAY 'POP IN AND PRAY' A new offering of a short service of prayer following Sunday Teas on 2nd August, 6th September, and 27th September, for anyone who wishes to come along.

10AM FRIDAY 18TH SEPTEMBER – ST MARY'S TATSFIELD ANNUAL GOLF SOCIETY DAY Please join us at the Parkwood Club Tatsfield TN16 2EJ, a beautiful 18-hole course on the picturesque Surrey Hills. We begin at 10am with a choice of bacon, sausage or egg roll and a chance to chat and meet other people. We tee off from 11am for 18 holes followed by a one course lunch. Cost is £60 with a deposit of £15 payable upon booking. A raffle will follow prize giving with any profits shared by The Chartwell Cancer Trust and St Mary's (towards the upkeep of our ancient Pilgrim Church dating from around 1075). Please contact **Marjory Broughton on 07790 241070, or marjorybroughton@gmail.com** to register or for any queries. Kindly have your handicaps available when booking.

11AM - 12.30PM THURSDAYS IN AUGUST 'FOREST CHURCH' AT ST MARYS A new series of outdoor opportunities in August for families to explore nature and discover Bible stories in a fun and engaging way whilst making new friends. We begin 6th August with 'Paths and Journeys'. See the poster in this edition or register at forestchurchtatsfied@gmail.com.

7.30PM SATURDAY 26TH SEPTEMBER – AUTUMN CHARITY MUSIC CONCERT Join us at St Mary's for this concert featuring varied genres of wonderful live music from talented local performers. Tickets £12 (including a complimentary drink and refreshments) from chrishancock12@outlook.com (07957 273225) or marjorybroughton@gmail.com

(07790 241070). Proceeds to Chartwell Cancer Trust and the upkeep of St Mary's Tatsfield.

CHURCHYARD TEAM Rain hampered our June session, with some volunteers braving the elements and others waiting a few days. The path and patio around the Millennium Hall were weeded and we added more seed to the wildflower area. Five graves were levelled in the new extension and we were able to rake the soil and sow grass seed. A Rowan tree was planted on the bank near the old cremation plots which will further enhance this area with colourful leaves and berries in the Autumn. Later in the month we welcomed Tatsfield in Bloom members who planted up our hanging baskets with six installed in the churchyard. Our Volunteers meet again on Saturday 1st August at 10am. **David Gulley**

DONATIONS TO WESTERHAM FOODBANK We continue to support our local community in need during these hard financial times through this Foodbank and will visit on 30th July. Any non-perishable food can be left in the Narthex at St Mary's opening times below. To check what items are most urgently needed or to make a monetary donation please visit <https://www.visitwesterham.org.uk/westerhams-foodbank>. Thanks for your continued support. **Hilary Vale 01959 577864**

OXTED BEREAVEMENT SUPPORT GROUP Bereaved people are welcome on their own or with a friend to chat, share experiences and discuss ways of coping. Trained volunteers are on hand for emotional and bereavement support. 1pm-3pm Thursdays 15th & 30th July, and 13th & 27th August at Oxted United Reform Church 21 Bluehouse Lane, RH8 0AA.



HIRE OF THE MILLENNIUM HALL Looking for a well-equipped venue for your event? Our Millennium Hall is available for bookings. **Sheila Cook (01959 577443)**

VISIT US Our ancient pretty church is open 9am–4.30pm on Tuesdays, Wednesdays, Thursdays, Saturdays and Sundays for viewing, prayer or reflection. You can also enjoy splendid views over the Downs from the Churchyard. Built around 1075 our church has a long, proud Pilgrim history and we continue to welcome those travelling the Pilgrim's Way today.

FOLLOW US Our website is at www.lttm.org.uk/stmarys where you'll find more information about St Mary's and has a link to our weekly Notice Sheet. You can also follow us on Facebook at <https://www.facebook.com/people/St-Marys-Tatsfield/61584833041098/>

ST MARY'S CONTACTS

Our contacts are detailed near the front of this magazine and on our website www.lttm.org.uk/stmarys

REGULAR TATSFIELD EVENTS AND INFORMATION

Sun	9.30 am	Yoga with Lexy, VH
	10.00 am	Church service – StM
Mon	9.30 am	Tots on Top – CH
	9.30 am	Shape and Tone with Gary - WIH
	1.30 pm	Bridge Club – WIH
	7.00 pm	Art Group – VH [Term time]
	8.15 pm	Bingo – TVC
Tue	1.00 pm	Not So Young Club (2 nd Tuesday of the month) WIH
	2.00pm	Cosy Crafters, Sheree’s Store and Tea Rooms
	2.30 pm	WI Meeting (1 st Tuesday of the month) WIH
	4.00pm	Paracise VH
	7.00 pm	Scouts and Explorers – SH
	6.15 pm	Barré with Fi - VH
Wed	9.00am	Mat Pilates with Emily, WIH
	10.30 am	WI Pop In – WIH
	2-4 pm	Composting Site OPEN
	6.00 pm	Shape and Tone with Gary – WIH
	6.00pm	Over 8s Jujitsu, SH
	6.30pm	Latin Fusion Dance Fitness for Adults, TPS
	7.30pm	Adults Jujitsu, SH
	7.30 pm	Yoga – VH
Thu	9.30 am	Yoga with Lexy, StM
	9.30 am	Shape and Tone with Gary, WIH
	2.00 pm	Scrabble at AMB (2 nd Thursday of the month)
	6.00 pm	Over 8s Judo – SH
	6.15pm	Barré with Fi, VH
	7.30 pm	Adults (14+) Judo - SH
	7.30 pm	Tatsfield Singers - TPS
	7.30pm	Mat Pilates with Emily, WIH
	8.00 pm	Table Tennis – VH
Fri	9.30 am	Combat Fitness - SH
	10.00am	Mat Pilates with Emily, WIH
	1.30 pm	Short Mat Bowls –VH
	4.15- 6.15pm	Boom Arts Academy – VH Various classes – contact for details
	8.00 pm	Badminton Club - VH
Sat	9.00 am	Under 8s Judo – SH
	10.00am	Composting Site OPEN 10am-12pm
	10.15 am	Over 8s Judo - SH

Venues: AMB - Aileen McHugo Building • CGA - Community Games Area • MH - Millennium Hall • SH - Scout Hut • StM - St. Mary’s Church • TACG – Tatsfield Allotments & Community Garden • TVC - Tatsfield Village Club • TPS - Tatsfield Primary School • VH - Village Hall • WIH - Women’s Institute



Home of Tatsfield Horticultural Society

Our new website address is tatsfieldgardeningclub.org.uk



Tatsfield Gardening Club

Whether you have a sprawling garden or just a single windowsill pot, the Tatsfield Gardening Club invites you to join our growing community. We are a friendly group of villagers committed to making Tatsfield a greener, more beautiful place to live.

We're dedicated to promoting the knowledge, interest, and enjoyment of gardening. Founded around 1910, the Club is managed by local volunteers whose expertise ranges from complete beginners to experienced horticulturalists.

Full details of all our events, hints and tips on how to enter one of our shows, composting and allotment news can be found on our website <https://tatsfieldgardeningclub.org.uk>

For anyone who does not use the internet and would like to know more about how to enter a show or find out about our events, please contact any of the following -

Chair: Jon Allbutt 07712 196406

Show Secretary: Carol Gaskell 07815 775859

Membership Secretary: Sarah Geoghegan 07904 479997

Events for 2026



Details are subject to alteration - please check nearer the time in the Parish Magazine or on the website tatsfieldgardeningclub.org.uk

Natural First Aid

Tuesday 8th September 2026 at 7.30pm in the WI Hall.

A talk by Elaine Roberts on the four main plants she uses in her basic kit. Elaine will bring ready made kits plus individual items for members to buy if they wish. Tea and cake available for small contribution on the door.

Autumn Show

Saturday 12th September at 3.00pm in the Village Hall

Plants for Free

Tuesday 13th October 2026 at 7.30pm in the WI Hall

A talk and demonstration by Jon Allbutt on how to take hardwood cuttings. Tea and cake available for small contribution on the door.

AGM

Wednesday 25th November 2026 at 7.30pm in the WI Hall
Refreshments and nibbles will be available and all welcome.

Membership

Membership can be started and / or renewed in January 2027 at the cost of £8 per household and completely free for seniors, although a small donation is always welcome.



Benefits

Access to all our events: Spring and Autumn shows, plant sales, evening talks with expert demonstrations and annual trips to RHS Wisley.

Composting: Access to our award-winning Community Composting Scheme in Approach Road.

Community Spirit: Support village initiatives like "Tatsfield in Bloom", allotments and the local community composting scheme.

A 10% discount at Knights Garden Centres in Chelsham and Woldingham. Current members can use their existing discount card until the end of the year.

50% discount on all seeds from Thompson and Morgan and 20% on all other live products, in 2025/26.

Discounted entry to RHS gardens.

How to Join:

Please contact the Membership Secretary Sarah Geoghegan via email membershipts@gmail.com or mobile 07904 479997.

Payments can be made to the Coop Bank - Account No: 65516610
Sort Code: 08 92 99
quoting your name and address to help identify your payment.

Your membership card will then be emailed to you.

Community Composting Scheme

Tatsfield Composting Site is growing thanks to your fantastic support — but with continued success comes increased demand!

So don't throw away your garden waste... bring it to us and help turn your hedge trimmings, grass mowings, woody and twiggy branches into valuable compost for the community.



These are the new Heavy Duty Compost bins purchased as part of the grant from our previous County Councillor Becky Rush.

The composting site is open

Saturday 10.00am -12.00 noon and every
Wednesday 2.00pm - 4.00pm from April to September.

Costs for our award-winning Black Gold will be £4.00 for a wheelbarrow load or you can fill your own bag for £2.00.

Tatsfield Allotments

Tatsfield allotments are located on Approach Road just West of the village centre. There are over 60 plots and, nearly all are rented by local people. A small plot is 4.5m x 4.5m and a large one is 10m x 10m. If you are interested in renting a plot when one becomes available please contact Alan Armitage on 07899 725944.



Prices are £30 for a small plot, £35 for half a plot and £60 for a full plot.

Autumn Show 2026

Section A: Vegetables - Jon Allbutt

President's Challenge Cup - most points in sections A,B,C and D.

Club Challenge Cup - most points in Section A.

Ron Draper Award - best exhibit in Section A

Allotment Trophy - best exhibit in class 19

Tony Erbes Cup - best exhibit in classes 5, 6 and 7

- 1: Five runner beans - one variety.
- 2: Five French beans - one variety.
- 3: Three beetroot - one variety.
- 4: Four potatoes - one variety.
- 5: Four onions - one variety.
- 6: A rope of onions - of at least 8 onions.
- 7: Twelve shallots - pickling, maximum 30mm diameter.
- 8: Three root vegetables of one variety from the following parsnip, carrot, beetroot.
- 9: Two cabbages - one variety.
- 10: One winter squash.
- 11: Three courgettes - one variety, maximum 15.5cm in length.
- 12: Five spinach or chard leaves with stalks, displayed in a clear vase; exhibitor to provide vase.
- 13: Five tomatoes - one variety, over 35mm diameter; displayed on sand on exhibitor's own plate.
- 14: Ten tomatoes - one variety, cherry or small, less than 35mm diameter; displayed on sand on exhibitor's own plate.
- 15: Two lettuces - one variety.
- 16: Two cucumbers - one variety.
- 17: Six stems of culinary herbs vase provided.
- 18: A culinary herb grown in a pot - maximum pot size 20.5cm).

- 19: A basket or box (maximum 61cm x 61cm) of 5 different fruits or vegetables grown on the Tatsfield Allotments. All exhibits must comply with the specified class lists.
- 20: A basket or box (maximum 61cm x 61cm) of 5 different fruits or vegetables NOT grown on the Tatsfield Allotments. All exhibits must comply with the specified class lists.
- 21: Two sweet peppers - one variety.
- 22: Sweet corn - two cobs.
- 23: Any other vegetable not specified above.
- 24: One runner bean - judged on length.
- 25: One potato - judged on weight.
- 26: One onion - judged on weight.
- 27: One marrow - judged on weight.
- 28: A Vegetable Disaster - points do not count towards trophies.

Section B: Flowers - Jon Allbutt

Elizabeth Challenge Cup - most points in this section

Harry Shrubbs Memorial Trophy - best exhibit in the dahlia classes

Special Award - Knight's vouchers, £20 for 1st prize and £10 for 2nd prize, kindly donated by Knight's Garden Centre Woldingham

+All entries in these classes are to be displayed in the vases provided at the show.

- 29: +Three roses - one or more varieties.
- 30: +Three roses - any type, in bud, half-open, and fully open.
- 31: +One specimen rose - any variety.
- 32: Three dahlias - one or more varieties.
- 33: +Five pompom dahlias up to 5cm in diameter.
- 34: +Three ball dahlias - one variety, any size.
- 35: +Three early flowering chrysanthemums - any variety.
- 36: +Three stems of spray chrysanthemums - any variety.
- 37: Five marigolds - any variety.

- 38: Five sweet peas - any variety.
- 39: A dish of six fuchsia blooms (displayed on sand).
- 40: +Vase of annual flowers.
- 41: +Vase of flowers chosen specifically for fragrance.
- 42: One specimen bloom.
- 43: Largest annual sunflower head - judged on width.
- 44: +Vase of mixed garden flowers - shrubs excluded, minimum 5 stems maximum 10 stems (**Knight's Garden Centre Award**).

Section C: Pot Plants - Jon Allbutt

(Note: All pots must not exceed 25cm in diameter)

- 45: One foliage or flowering pot plant.
- 46: One cactus or succulent container.
- 47: One geranium.
- 48: One fuchsia.

Section D: Fruit - Jon Allbutt

- 49: Three dessert apples - one variety.
- 50: Three culinary apples - one variety.
- 51: A dish of 10 raspberries - one variety.
- 52: A dish of any soft fruit other than raspberries (e.g., redcurrants, blackcurrants, whitecurrants, blackberries, loganberries).
- 53: Any other fruit not listed in this schedule.
- 54: A basket of fruit - with at least 3 different types of fruit.
- 55: One dessert apple (judged purely on taste).

Section E: Flower Arrangement - Marie Shallcross

McHugo Trophy - most points in this section

Clark Cup - best exhibit in section E

Exhibitors in this section may, if they wish, offer an item for sale by displaying it's price.

62: "The Village Green" – A natural, meadow-style arrangement using grasses, wildflowers, and foliage.

63: "Equinox" – An arrangement using a sharp contrast of light and dark blooms to represent day and night.

64: "The Local Pub" – A rustic arrangement presented in an unconventional container (e.g., beer stein, tankard, or cider jug).

66: "Kitchen Comforts" – An arrangement presented in an everyday kitchen container (e.g., vintage tin, mug, or jug).

Section F: Crafts - Carol Gaskell

Slatter Trophy - most points in this section

Craft items can be interpreted in any medium as long as those materials stipulated are included.

Exhibitors in this section may, if they wish, offer an item for sale by displaying it's price.

67: A handmade garden gnome.

68: A handmade piece of jewellery.

69: An autumnal door wreath.

Section G: Art - Carol Gaskell

Peter Warner Trophy - most points in this section

If possible please remove all glass from exhibits prior to bringing to the show.

Unless specified, the medium used to interpret this title is up to the artist

Exhibitors in this section may, if they wish, offer an item for sale by displaying it's price.

70: A Splash of Colour

71: My Happy Place

72: In Flight

73: A Portrait in Pencil

Section H: Photography - Carol Gaskell

Jeff Bloxham Trophy - most points in this section.

All exhibits to be mounted or framed, print size max 25.5cm' x 20.5cm'. If a photograph is framed it should be capable of being hung. If possible please remove all glass from exhibits prior to bringing to the show. Entrants may include a title. A smart phone may be used.

Exhibitors in this section may, if they wish, offer an item for sale by displaying it's price.

74: Reflection

75: Morning mists and cobwebs.

76: Tatsfield lanes and paths.

77: Community in action.

Section I: Domestic - Peter Maynard

Tom Black Cup - most points in this section

78: A jar of jam.

79: A jar of jelly.

80: A loaf of sourdough bread - bread maker can be used - recipe of your choice.

81: Plot to Plate - fruit or vegetable displayed alongside a cooked dish utilising that ingredient.

82: Shortbread biscuits - Fair Trade Products where possible.

83: Gluten free Chocolate and Raspberry Brownies - recipe below

Gluten-free Chocolate and Raspberry Brownies

Prep 10 mins, Cook 40 mins

Ingredients

200g/7oz dark chocolate, broken into chunks

100g/4oz milk chocolate, broken into chunks

250g pack salted butter

400g/14oz light soft brown sugar

4 large eggs

140g/5oz gluten-free plain flour

50g/2oz cocoa powder

200g/7oz raspberries

1. Heat oven to 180C/160C fan/gas 4. Line a 20 x 30cm baking tin with parchment.
2. Put the chocolate, butter and sugar in a pan and gently melt, stirring occasionally with a wooden spoon. Remove from the heat.
3. Stir the eggs, one by one, into the melted chocolate mix. Sieve over the flour and cocoa, and stir in. Stir in half the raspberries, scrape into the tin, then scatter over the remaining raspberries. Bake on the middle shelf for 30 mins or, if you prefer a firmer texture, for 5 mins more. Cool before slicing into 15 squares.

Store in an airtight container for up to 3 days.

Per Square 389 kcals, protein 5g, carbs 44g, fat 22g, sat fat 13g, fibre 2g, sugar 38g, salt 0.4g

Recipe from BBC Good Food

Section J: Juniors 11 and under - Hilary Schultess-Young

The Tatsfield School Cup - most points in this section.

Please state age on entry form. Any craft materials are acceptable e.g. wood, clay, plastic and cardboard waste.

93: A bird feeder made out of recycled materials.

94: An animal themed collage made from gathered autumn leaves.

95: Four decorated fairy cakes.

Entrants aged between 12 to 18 years inclusive are encouraged to put their entry in to the adult section.

N.B. One of the Committee members at the start of the category will be the person to contact if you have any questions over the entries in that particular section. Contact details can be found on our website.

tatsfieldgardeningclub.org.uk



Help our Gardening Club grow!

Our friendly committee is looking for new volunteers to help organise our upcoming events. You do not need a green thumb or expert knowledge - just an enthusiasm for our community. We meet every few months in a very relaxed, informal setting. If you want to share your ideas and help shape the next year, please get in touch with one of us.

Contact details can be found on our website tatsfieldgardeningclub.org.uk

UPCOMING EVENTS – VILLAGE AND BEYOND

JULY

Every Sun 3.00pm	Summer Sunday Teas, StM
11 th Sat 7.30pm	Oxted & Limpsfield Music Society Concert, Hazelwood School
13th Mon 8.00pm	Parish Council Meeting, AMB
17th Fri tbc	Claire Coutinho MP, Tatsfield Surgery, venue tbc
20th Mon 3.30pm	Tandridge Local Plan, Tatsfield Consultation Event, AMB
12 th – 15 th various	Calamity Jane, Kenley Holiday Workshop, Barn Theatre

AUGUST

Every Sun 3.00pm	Summer Sunday Teas, StM
1st Sat 10.00am	Churchyard Tidy Up, StM
2nd Sun 5.00pm	Pop in and Pray, StM
4th Tue 2.30pm	“What is the Point of Wasps?” WIH
6th Thu 11.00am	Forest Church, StM
13th Thu 11.00am	Forest Church, StM
20th Thu 11.00am	Forest Church, StM
27th Thu 11.00am	Forest Church, StM
31 st Mon 12.00pm	Hospice in the Weald Summer Fete, Chevening House

SEPTEMBER

Every Sun 3.00pm	Summer Sunday Teas, StM
4 th Fri 7.30pm	Alice present The Sounds of Smokie, Barn Theatre
5 th Sat 7.45pm	Slade UK, Barn Theatre
6th Sun 5.00pm	Pop in and Pray, StM
8th Tue 7.30pm	Natural First Aid (Gardening Club), WIH
11 th Fri 7.30pm	Flash, A Tribute to Queen, Barn Theatre
12 th Sat 7.45pm	Oxted Comedy Night, Barn Theatre
19 th Sat 7.45pm	The Ultimate Elvis Experience, Barn Theatre
24 th Thu 7.45pm	Andy Fairweather Low & The Low Riders, Barn Theatre
25 th Fri 7.45pm	Bruce Juice, Barn Theatre
26th Sat 7.30pm	Autumn Charity Concert, StM
26 th sat 7.45pm	Classic Rock Revival, Barn Theatre
27th Sun 5.00pm	Pop in and Pray, StM
10 th Thu tbc	Musical Bingo Night, Ye Olde Ship
12 th Sat 3.00pm	Tatsfield Gardening Club Autumn Show, VH
14 th Mon 8.00pm	Parish Council Meeting, AMB
18 th Fri 10.00am	St Mary’s Annual Golf Society Day, Parkwood Golf Club

TATSFIELD WI

Tatsfield WI meets on the first Tuesday of each month in the WI Hall, Paynesfield Road.



Our speaker for June told us part two of the story of a young woman from the Weald of Kent who served during the war as a driver and when sent to collect some returning POWs she met a dashing wounded pilot. Needless to say romance blossomed and she and the one legged young man first ran a pub and later lived their family dream of running a smallholding near Maidstone. That's where the 'pigs' from the title of the talk **Potholes, Pigs and Paradise** came in. A really heartwarming and funny afternoon's entertainment made all the more engaging when we learnt that our speaker, Penny, is a proud child of that couple, born in the pub and brought up on the pig farm.

Next month on **Tuesday 7th July** from 2.30 until 4pm we will enjoy a Garden Party meeting chez Cartwright, who have been our hosts before at their lovely home.

On Tuesday 4th August, we will tackle the thorny question "What is the point of wasps?"

Don't forget, everyone is invited to come along for a cup of coffee or tea and a friendly chat every Wednesday morning between **10.30 and 12** in the WI Hall in Paynesfield Road. A great way to meet and catch up with other village residents – anyone of any age is welcome. So, if you are new to the village or lived here for a while and you are passing, please do just "Pop In".

I would also like to remind you that our WI Hall is a conveniently local, warm (new radiators just installed) and bright venue available to hire at very reasonable rates for a meeting, family party or celebration, please just give us a call on **01959 577684** to find out more.

Susan Smale 01959 577660

TATSFIELD 100 CLUB

Congratulations to the winners of the Tatsfield PFA 100 Club for **April 2026**:

1 st Prize	Tom Ellis	£42.00
2 nd Prize	Craig Seamons	£28.00
3 rd Prize	Michael Wiggins	£14.00

Thank you for supporting sport the Tatsfield Cricket Club. If you know of anyone who wishes to join the 100 Club (for a modest £6 per month), or if you would like additional numbers, then please contact me at leames200@gmail.com.

Les Eames

TATSFIELD IN BLOOM



We have finally planted up all of our summer plants, including helping with the hanging baskets at the Church last Saturday.

Most of the plants have been grown on by us from tiny plug plants and we are very happy that we have been able to do this which cuts down on cost, makes us more sustainable and is thoroughly enjoyable for the volunteers. The plants will grow dramatically over the summer with the aid of the volunteers who have filled up the watering rota until



September. Many thanks to those who have volunteered for this.

Over the last few weeks you will have noticed that we have cleared the Tatol bed which is being redesigned and rebuilt by the Parish Council in July. This will be



taken back from the corner in the hope that the large lorries will not drive over it in the future. All the shrubs have been taken to the polytunnel where we have potted them up and will take care of them until the new bed is ready for replanting. Many of the heucheras and shrubs have been split and all have taken well. These will be used to increase our planting of perennials around

the village and at the school in the Autumn.

If you would like to make a donation towards the displays in the village, please use the yellow pots in Sheree's shop, The Old Ship or The Village Club. Alternatively, please donate direct to TIB: **Tatsfield in Bloom A/c No: 65383694 Sort Code: 08-92-99; Or send them to me at 12 Shipfield Close, Tatsfield, TN16 2AU**

Many thanks for your continued support.

Jill Hancock (577622/07711 417387) (jillhancock12@gmail.com)

THE OXTED & LIMPSFIELD MUSIC SOCIETY

CONCERT: SATURDAY 11TH JULY



The Society is excited to be presenting a performance of the Schubert song cycle *Die Schone Mullerin* together with Schubert's six *Moments Musicaux* by the marvellous HELEN CHARLSTON (mezzo-soprano) and SHOLTO KYNOCH (piano) at The Bawtree Hall, Wolfs Hill, Oxted RH8 OQU on Saturday 11 July 2026 at 19.30

"Charlston a strikingly original talent", (the Guardian)

"Kynoch...beautifully sensitive, flexible and transparent throughout." (the Gramophone Magazine)

Tickets are £30 (with free entry for those under 25). Either on the door or by way of our website at www.olms.org.uk

TAG: WE'RE ALL GOING ON A SUMMER HOLIDAY.....

Many thanks to all the Tatsfielders and friends who have supported our art group this year. We appreciate all your interest and continuing purchases when you visit the pub and Sheree's. Our exhibition this year was our best to date for both visitors and sales. We will aim to better that next May. Artists outside our group are welcome to join for that occasion if we have space.

We are now planning for next year. As usual we will meet from 7-9:30pm on Monday evenings from September and welcome new members at any time. If you want to pop in and see if we would suit you your first 2 sessions are free. Please contact me on **07815775859** if you need any more information.

We support the horticultural shows held twice yearly by Tatsfield Gardening Club. The first is on 12th September. If you are drawing or painting over the summer break, please consider entering the following classes:

1. A Splash of Colour
2. My Happy Place
3. In Flight
4. A Portrait in Pencil

The insert in this magazine gives you all the entry details. **Carol Gaskell**

STEP INSIDE CHEVENING: SUMMER FETE FOR HOSPICE IN THE WEALD

Enjoy a rare opportunity to explore the beautiful private gardens of Chevening House, near Sevenoaks, at a special Summer Fête hosted by Hospice in the Weald. The exclusive event, which takes place from 12-5pm on Monday 31st August, offers visitors rare access to one of Kent's most historic and picturesque private estates, while helping to raise vital funds for Hospice in the Weald.

The stunning pleasure grounds of the Earls Stanhope, today run by the Chevening Trust without reliance on public funding, are characterised by lawns and wooded walks around an ornamental lake.

With live music and family friendly garden games, guests are invited to bring a picnic to make the most of the afternoon. There will be artisan stalls offering goods from local makers and producers, along with a host of delicious refreshments available, including local ice cream and a Pimm's tent.

All proceeds raised go directly to Hospice in the Weald, which provides free care and support to those facing life-limiting illness when they need it most.

Well behaved dogs on leads are welcome and there is ample free parking available on site.

Advance tickets are £12.50 for adults, £2.50 for children over five, and £25 for a family ticket. To book, visit **hospiceintheweald.org.uk**.

THE TATSFIELD GARDENER IN JULY AND AUGUST

The accuracy of weather forecasting seems to be much improved lately and looking at the medium term forecast www.weather.metoffice.gov.uk it looks as if we are in for a dryish period, often hot, with a risk of heavy rain/thunderstorms at times. There are ways we can do some storm protection for some plants by checking that taller plants are supported, ensuring planted containers are well watered, this can double the weight and reduce the risk of them being blown over, good for the plants too!

I remember as a young gardening apprentice being told that a good vegetable gardener should be able to harvest something from the garden at any time of the year including Christmas Day, now there is a challenge!! The trick, I was told is, in August/September, to make sure that you sow seeds of quick growing vegetables such as lettuce (Little Gem is a good one), mixed salad leaves, leafy kale, annual leaf spinach, spring onions, radish, carrots (stump rooted are best for late sowings). Sow in rows or scatter the seed in any spare space you find, especially if it is where you have recently harvested another crop. You can also do this in containers or even in spaces between plants in a border. So, if you are looking for something to keep your children busy during the holidays, why not pop down to our local garden centres and buy some seed for them to sow and watch them grow into food!

I have noticed some conflicting advice being given about what to do with your area of meadow/wild flower at this time of the year. I think this is due to some folk wanting their wild area looking more neat and tidy and this may



Messy wildflowers, courtesy of a messy Tatsfield gardener!

conflict with the need to ensure the wild flowers have had time to produce seed. Distributing wild flower seed is an essential part of establishing a successful wild flower area, over time as some wild flowers take several years to mature and flower. If you are patient and wait for the seeds to ripen; a good tip is to squeeze the seed pod, if it feels dry and hard, and is splitting, it is ripe and ready for sowing; July/August is a very good time to check and then cut the area. Traditionally a wild flower area was cut with a scythe, hard work and time consuming! The modern approach is to use a strimmer, the vegetation should fall to the ground where it is left to finish drying off and allow the seeds to be distributed. Finally rake it all up – this also scatters more seed – and put it on the compost heap or, if you have the space, stack it in a heap and watch it turn into compost, remember to turn it regularly for aeration, a vital ingredient in decomposition.

Some early flowering shrubs and climbers should be growing strongly now to produce the stems needed for next years flowering. Some really vigorous plants (Wisteria and

Roses) can produce long wavy stems that can be a nuisance, especially when wet, these might need cutting back if there is no room to tie them in. Tying them in is the best approach here as to cut them all away is to remove next year's flower!

If your roses are looking poorly, not growing well, lots of old flower heads but no flower, it is time to give them a wake-up call! Prune old flowering wood down by half, remove any weak shoots, give them a dressing of rose fertiliser, tomato fertiliser also works, water thoroughly if dry. New growth should start in a few weeks and provide you with a late show of flower until late in the season.

Jon Allbutt

WILDLIFE GARDENING TIPS FOR SUMMER

Wildlife is a fantastic addition to any garden, providing plenty of entertainment and animation, and a very helpful level of pest control; birds are especially excellent at keeping the bugs at bay, not to mention curbing the spider population. And if you have children around, wildlife can be a welcome distraction away from screen-time. So there are many benefits in having a healthy garden ecosystem, but in the summer the one essential ingredient we are short of up here on the hill is a wildlife water supply. It's true that the ducks on the green are doing ok but for everything else from the bugs to the badgers, water will be in short supply. And for your garden birds, the one must-have item if you don't have a pond is a birdbath, even if it's just a plant-pot saucer of water on the lawn or patio. Of course, a birdbath provides a well needed thirst quencher, but birds desperately need to bathe to maintain their feathers and for hygiene, so you may spot a grateful queue lining up for a dip. And for the smaller mini-beasts in your garden; they're not going to survive a gruelling trek to Westmore Green for a drink, so the kind and compassionate thing to do is to put a dish of water out in the garden, just as you would for a pet.



A friend asked if I could write a piece on rats, and TBH I was a bit stumped until I spotted a piece on Tatsfield Talk suggesting that DIY rat poison was a good solution to rats in the garden. This is a terrible idea partly because its cruel and partly because it is almost certainly illegal. Oh, and your neighbours may hate you forever if you inadvertently kill their pet cat if it snacks on a poisoned rodent. We all know rat numbers multiply like crazy and in the summer, they can become a real nuisance as they come looking for the food and shelter they know they can find around us. And despite being quite clean animals, they can pass on some very horrible diseases. So, they need to be dealt with. Of course, the first thing to check is why they are visiting in the first place, and if they've found a food source, try to eliminate it before doing anything else. Cats are an obviously

excellent solution but if that's not amenable then I believe you can deter rats with various natural repellents such as peppermint, clove or eucalyptus oil. However, if rats are already present then they need to be trapped and disposed of, and I've had quite a bit of experience of this having worked at a farm. DIY poison traps are a no-no because of the likelihood of unintended consequences of another animal (eg cat, dog, fox, badger, red kite, magpie, etc) coming along and eating either the remains of the rat or finding some left-over poison and ending up poisoned too. It is important to know that you can be fined or imprisoned if you cause unnecessary harm to any animal, so poison is as risky as it is inhumane. You can, of course, hire professional pest control but otherwise I've found the best traps are the battery powered ones readily available on the internet. You bait them with a little food and when the rats investigate, they get an immediate and lethal electric shock. I have also tried the humane traps that catch rats live but then you're left with an angry rat to deal with (rather you than me). I would, however, add that rats get a very bad press, most of which is undeserved, so if they're not actually a problem, they deserve to live too.

Slightly interesting fact of the month..... Birdbaths can turn an unsightly/unpleasant green in the summer sun and this can be either unsightly, or counter-productive in providing a healthy water supply. I had heard that putting a single copper coin in can prevent rampant algae from taking over. This seemed a bit questionable so I've checked it and was surprised to hear that it's a trick approved both by vets and the RSPB. Apparently older copper coins are better because of a higher percentage of copper. Every day's a school day! **Jim Kenney**



IMAGES OF TATSFIELD
FEATURED PAINTING - THE COCOLITH
Painted by Carol Gaskell, owned locally.



TOP FAIRTRADE PRODUCTS

Ever wondered what are the most common Fairtrade items that ensure farmers and workers receive fair wages, safe working conditions and community development premiums? Here are the top six:

Coffee: One of the most widely available Fairtrade items, ensuring small-scale coffee growers receive a stable minimum price.

Cocoa & Chocolate: Sourced predominantly from West Africa and Latin America, supporting ethical farming practices against child labour.

Bananas: Highly visible in supermarkets, guaranteeing living wages for plantation workers and small-scale farmers.

Tea: Available in multiple varieties (black, green, organic), sourced from estates where workers have access to Fairtrade premium funds.

Sugar: Traded globally, ensuring sugarcane farmers in developing countries receive fair deals and sustainability support.

Cotton: Found in clothing and home textiles, guaranteeing price stability and safe handling for cottons farmers



Our local village store **Sheree's Stores** stocks Fairtrade. Look out for the logo on products on the shelves including rice, coffee, biscuits and hot chocolate.

If you want to take more action please go to **Fairtrade.org.uk** and sign the petition to the UK Government to protect human rights, collaborate for change and honour their international climate finance commitment. Look for the Fairtrade option in your

weekly shop to make a positive difference. *"Together we can brew it fair."*



Tatsfield Fairtrade Group

tatsfieldfairtradevillage.weebly.com

[Facebook.com/tatsfieldfairtrade](https://www.facebook.com/tatsfieldfairtrade)

tatsfieldfairtradegroup@gmail.com

TATSFIELD HISTORY PROJECT

Would you be interested in taking part in the **Tatsfield History Project**? We're a small, informal group and you may have some fresh ideas on what we should be doing. If so, please get in touch. **Ian Mitchell**

Email: tatsfield.history@talk21.com Tel: 577376

Website: <https://e-voice.org.uk/tatsfieldhistoryproject/>

THE NIGHT SKY IN TATSFIELD – JULY AND AUGUST 2026

The July evening sky has gone from a rash of planets to just one, although perhaps brilliant Venus makes up for the others. The “Evening Star”, as we can currently refer to it, is visible low down (around 10° high) close to the west throughout July although it begins to lose height later in the month. It’s best to look 30 to 45 minutes after sunset, so around 10pm at the start and 9:30pm at the end of the month.

There are three big astronomical events in August, the biggest being a partial eclipse of the Sun on Wednesday 12th August in the late afternoon and early evening. Please note you will need a very good west-north-west horizon to see the end of the event.

The eclipse begins at 6:18pm when the body of the Moon will begin to encroach onto the Sun’s disk from the west (the right). At that time the Sun will be due west with an altitude of approximately 20°. Gradually more of the Sun will be obscured with a progressively smaller and smaller crescent remaining until at 7:13pm maximum eclipse occurs as 91.4% of our star is covered. By then the Sun will be just 10° high and a little north-west of west. The Moon then gradually retreats with the event ending at 8:07pm as it finally leaves the Sun’s disk. At that time, it will be just 2½° in altitude in the WNW.

I must discuss safety here because using **any** form of optical aid to view the Sun will result in serious eye damage or even blindness. This is because not only is the visible part of the spectrum (white light) focussed onto your eye but also the dangerous ultra violet (UV) and infra-red (IR).

The safest way to view an eclipse of the Sun is to use “eclipse glasses” which can be bought for a few pounds from reputable dealers such as First Light Optics at <https://www.firstlightoptics.com/> who have dealt in optical equipment for many years. These “glasses” are usually made of cardboard, in the shape of regular glasses but with special filters instead of glass lenses. There are also rectangular hand-held viewers which do the same thing. However, **do not** wear these and then think you can look through a telescope safely. You cannot!

That same night, 12th/13th August, sees maximum activity from the Perseid meteor shower, so called because the meteors appear to radiate from the constellation of Perseus. It should be dark enough by 10pm to begin observing although predictions suggest that there will be more activity later and particularly after midnight. Because the Moon is so close to the Sun it won’t interfere with meteor observing in any way. If the sky is clear we should see a meteor every 3 or 4 minutes on average.

If you plan to spend any longer than a few minutes meteor watching the I suggest you use a sun lounger with the head end raised, pointing either north west towards the Plough or east/south east towards the Square of Pegasus. You will almost certainly find that you see infinitely more artificial satellites than you do meteors.

The last of the “Big Three” events is a partial eclipse of the Moon which occurs on 28th August. The drawback to this event is that it occurs in the early hours of the morning. An eclipse of the Moon is caused by the Moon moving into the Earth’s shadow.

The eclipse begins at 3.33am with maximum eclipse occurring at 5.12am when the Moon is 93% eclipsed. At 6:11am the Moon will set in the WSW as seen from our part of the country so we will not see the end of the event. Hopefully, with clear skies we will see the Moon turn a reddish-brown colour close to the time of maximum eclipse.

Brian Mills FRAS

TEN YEARS OF “THE FUN ORCHESTRA” NDCO CELEBRATES WITH ANNIVERSARY CONCERT

The North Downs Community Orchestra (NDCO) celebrated its 10th anniversary with a spectacular performance at Woldingham School’s Millennium Theatre. Under Musical Director Anna Maria Tabor, the 70-strong ensemble delighted an enthusiastic audience of over 400 people with a vibrant programme spanning Handel, Mozart, *The Phantom of the Opera*, and *Pirates of the Caribbean*, concluding with a jubilant encore of *The Dambusters*.



Beyond the music, the afternoon was filled with heartfelt gratitude. The NDCO said a fond farewell to patron Rainer Hersch, who is stepping down after a decade. In a moving speech, Rainer acknowledged the immense dedication and hard work required to grow the orchestra from its humble beginnings of just 16 players to the thriving, 70-member strong group it is today, noting that over the past ten years, members had gone through all of life’s different cycles together.

There was also a highly emotional moment when the orchestra recognized co-founder David Ellis, who was watching proudly from the audience. The orchestra publicly thanked him for his vision in starting this amazing initiative a decade ago at Godstone Scout Headquarters, prompting a richly deserved round of applause as David stood to acknowledge the crowd. Concert Manager Emma Scheck was also presented with flowers in recognition of her tireless work behind the scenes ensuring a flawless event.

Visit www.thefunorchestra.co.uk to find out more.

Lin Larmer

NIGEL'S NATURE NOTES

It may be July but here in the world of Nature Notes we're still in April! Michelle (Hitchcock) sent us this timely reminder (still relevant) of the joy and despair of springtime (16.04.26):

*'What a treat to have a **Robin's** nest in the garden and watch the parents feeding. The chicks burst out of the nest full of life but as they can't fly for a few days unfortunately a cat got one. It was rescued but died overnight. Please may I ask people to keep cats in as much as possible at this time of year, and definitely at night time. They protest but soon get used to it!'*

I certainly support your request for cat control, Michelle. Perhaps we also need some **Magpie** control. There were seven in my garden last week! They are without doubt entertaining, but eggs and young birds are high on their list of dietary delicacies.

Paul (Jackson) seemed determined to confuse and perplex. He kindly sent a message with a photo and a sound recording, but I was unable to fully access it. Fortunately, a simple explanation was soon forthcoming (24-26.04.26):

*'First **Cuckoo** and **Swallow** this morning! [What I sent] was a screen grab from the Merlin app, recording their calls at 11.45. We don't recall hearing any cuckoos in 2025 so this was quite exciting. Both calls were heard at our house in Maesmaur Road. The cuckoo was east of us, maybe around Tatsfield Green.'*

Thanks for the clarification, Paul. Unfortunately, the calls didn't play on my aged laptop. Anyway - CONGRATULATIONS – you were the first correspondent to report either of these birds in 2026. Keep up the good work!

Moving on to May we have a three way conversation between Steve (Gaskell), Ruth and Jim (Yeeles) and myself (27.05.26):

Steve: *'Small but perfectly formed little butterfly [**Grizzled skipper**] on our garden wild patch 25th May. Not a common garden b/fly, so having a wild bit does work bringing stuff in (Marbled White last year). Also suspected sighting of a **Silver Washed Fritillary** (99.99%) on same day in garden, but my ref. books say too early!'*



Nigel: *'Wow! A Grizzly! Never seen one. Has anybody locally? We'll see what Ruth and Jim have to say. It's the right time of year for it. As for the fritillary; well, officially too early BUT with this weather very possible and 99.99% is good enough to convince me! Two great spots, Steve. Well done and thanks for the email.'*

Ruth/Jim: *'Nice spot, Steve! We consider ourselves very lucky to spot one or two Grizzled a year over on the reserve and have yet to see any this season, so far. The SWF is very*

early, but not impossible and would be the first sighting in the county, I believe. Have you noticed there seems to be an influx of **Painted Lady** in the last few days? Could be a very good year. Also had our first **Hummingbird Hawkmoth** this afternoon. Totally agree with you about the benefits of a wild patch. It can make such a difference, no matter the size. Finally, three **Swifts** over Tatsfield Green and the old school 23rd May (a day later than last year) but not spotted since. Hoping they haven't moved on but it's still early days.'

Thanks to Ruth and Jim. Unfortunately, apart from a solitary **Swift** spotted on the 26th and a **Green woodpecker** on the 16th June, my own observations are dismal. Oh well, perhaps it's my turn next? Incidentally, as this looks like being a warm (baking hot!) summer there may be a second generation of Grizzlies in August. Expectation + keen observation = ?

In early June, Nicola (Reeves) reported an exciting overhead occurrence (01.06.26):

*'On Friday afternoon I heard the birds calling to each other so looked up ... but never expected to see five **Red kites** and five **Buzzards** circling overhead together! We have in the past had up to eight Buzzards overhead at one time. Normally the red kites will 'see off' the buzzards but they stayed around for quite a few minutes. The most Red Kites we've ever had here are three from memory. I wonder what they were all after.'*

Good question, Nicola. I'd guess they were scavenging. Whatever the reason, that was quite a sighting. I think the most I've seen were seven Kites to the south of Clark's Lane.

And finally this month, Carol (Pearson) discovers treasure whilst not gardening (04.06.26):

*'I'm sending you photos of what grew when we did no mow May. The verge is outside our house in an unmade road. Four **Bee orchids** in total and one **common orchid**. Will have to wait now before we can cut it. Who knows wha...'*



Indeed, Carol, who knows? Thank you for your email. The Bee orchid looks fabulous. I've never seen one growing in the wild, and yet you have four of them! I guess they were just lying dormant waiting for the opportunity to grow and bloom. Lucky you!

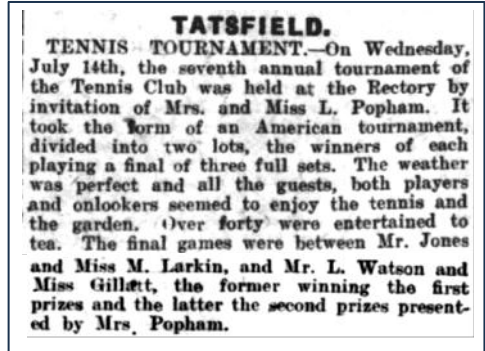
Summer's here : **Explore – Enjoy – Observe – Communicate Stay Cool!**

Any news or views? Contact: nigelshaw2000@hotmail.com
Alternatively, drop a note in to 'Primrose Ridge', Greenway.

According to records on the Internet, the English summer of 1926 was among the warmest of the decade.

So it was that July's seventh annual tennis tournament held at the Rectory enjoyed excellent weather, with more than forty people taking tea in the grounds. At Paynesfield House, the Women's Institute fete included country dancing by pupils from Merle Common School, amateur dramatics, and music provided by a band from Croydon.

But there was also significant bad news: a former Tatsfield widow who had moved to Croydon some years before was found to have committed suicide by jumping into the river Wandle at Waddon. An inquest was told that three members of her family had been killed in action during the First World War and that another had died in an asylum. The coroner recorded a verdict of unsound mind.



In another court, a mining engineer living in Tatsfield was declared bankrupt and attributed the failure of his business to losses in mining transactions in France, made worse by unfavourable foreign currency rates.

The prospect of a railway coming to Tatsfield continued to be in the local press. In the summer of 1926, the issue was the exact route of the proposed Southern Heights Light Railway as it passed by the original school in Church Lane and its effect on farmland.

The local bus service was also in the news, attracting the attention of Godstone District Council. The East Surrey Traction Company had started a service between Tatsfield and Hartfield, using double-deck buses. The Highways Committee reckoned that these were too dangerous to be used on Titsey Hill and the Clerk was instructed to tell the company that while the Council was anxious to see the service maintained, there was an element of danger, *'particularly in frosty weather and during the fall of leaf'*.

The accessibility of Tatsfield was being actively promoted. In the Mitcham Advertiser, Beulah Mount in Kemsley Road was available, described as *'a nine-roomed country house with small bungalow, stabling and a large garden'*. The existing railway service to Westerham and a bus route to Croydon were key features.

Ian Mitchell, Tatsfield History Project

Email: tatsfield.history@talk21.com Tel: 577376

Website: <https://e-voice.org.uk/tatsfieldhistoryproject/>

LEX RESIN LTD
EPOXY FLOOR RESIN SOLUTIONS

**REFINED SURFACES.
BUILT TO LAST.**

- STUNNING FINISHES**
Seamless, High-gloss elegance
- DURABLE & LONG LASTING**
Built to withstand heavy use and daily wear.
- EASY TO CLEAN & HYGIENIC**
Resistant to spills, stains and chemicals.
- FOR EVERY SPACE**
Perfect for homes, commercial and industrial areas.

GET A QUOTE TODAY ✨

CALL US
07899 551 222
lexresinltd.co.uk

- METALLIC EPOXY**
- FLAKE SYSTEMS**
- HIGH GLOSS FLOORS**
- RESIN TABLES**

RESIDENTIAL: Beautiful floors for your home.
COMMERCIAL: Stylish, durable surfaces for your business.
INDUSTRIAL: Tough, reliable solutions for the toughest spaces.

PREMIUM FINISHES. EXPERT CRAFTSMANSHIP. UNMATCHED RESULTS.

Tatsfield Parish Magazine

Tatsfield Parish Magazine

Tatsfield Parish Magazine

Local Business or Event?

10 editions of this magazine delivered to
over 800 Tatsfield households

Prices from £40

Tatsfieldmag@gmail.com

GLEN DURHAM

Your local, personal and dedicated

ESTATE AGENT

Moving home this summer?

Maximum Exposure, Optimal Results:

Enjoy exceptional service, advanced technology, and nationwide marketing and achieve the best outcome for your property sale with me, Glen and The Agency UK.

Expert Guidance and Support:

As an experienced agent, I will provide personalised assistance throughout the selling process, ensuring a smooth and successful transaction.

Stress-Free Experience:

Let me handle the complexities of selling your property, allowing you to relax and focus on what matters most to you.

glen.durham@theagencyuk.com

07784 124 888

Property **Sold** Properly

SALES - LETTINGS - PROPERTY MANAGEMENT



PPHS

Professional Plumbing
& Heating Services



**Your 5 Star
Plumbing and Heating Specialists**



BOILER INSTALLATION, REPAIR, REPLACEMENT, SERVICING & SAFETY CHECK

We can advise you of the best boiler to suit your needs, budget and specification as well as installing and maintaining your current boiler. PPHS would recommend an annual boiler service to keep your boiler running at full efficiency, prevent any breakdowns and save you money.

PLUMBING & PIPEWORK

Whether you need a leak repaired, a new tap installed, radiators repaired or fitted or general plumbing and pipe work, we can help.

RADIATORS & POWER FLUSHING

A thorough powerflush will improve heat distribution throughout the property, subsequently lowering household energy bills and increasing system reliability.

BATHROOMS

PPHS can do as much or as little as you need to help you realise your dream bathroom – including helping you choose the materials, sorting out the plumbing and electrics, plastering your walls, tiling and installing the furniture



Scan Me



07702 082 193



peter@professionalplumbingandheating.co.uk



www.professionalplumbingandheating.co.uk

—THE—
LONDON ROAD
FURNITURE COMPANY



5000 sq ft of beautiful furniture and gifts over 3 floors

WWW.LONDONROADFURNITURE.CO.UK



THE LONDON ROAD FURNITURE COMPANY

LONDON ROAD, HALSTEAD,
SEVENOAKS, KENT, TN14 7AA

OPEN 6 DAYS A WEEK (CLOSED WEDNESDAYS)

Tel 01959 533433





RB

ROOFING AND BEYOND

- New roofs / roof repairs
- Flat roofs
- Moss & gutter cleaning
- All tile repairs
- UPVC Fascia soffit gutters
- Lead work / lead welding
- Chimney
- Exterior painting
- Fencing
- Cladding

TEL: 07853 567 541

FREE QUOTES

 **RB roofing and beyond**

 **rbroofingandbeyond**

email: rbroofingandbeyond@outlook.com

BASED IN TATSFIELD



Local Electrician

Part P Registered

*

Fully Insured

*

No job too small

*

Free Estimates

07847 395 437



DAVID WAITE PROPERTY MAINTENANCE

Private & Commercial

Mob: 07949 307906

Email: djw2261@aol.com

Hedges Cut. Tree Work

Log Cutting & Splitting

18-Ton Log Splitter

& man available

Grass Mowed. Turfing

Overgrown Gardens

Winter Tidy Ups

Patios, Sheds Erected

Fencing Repairs

Brickwork Repairs

Gutters Cleaned & Repaired

Internal Painting

Fully Insured



079 75 79 79 75

OAKLANDFENCING@GMAIL.COM

- ALL FENCING WORK UNDERTAKEN:
- TIMBER • CONCRETE • METAL • GATES • SHEDS •
 - REPAIRS • DOMESTIC & COMMERCIAL •
 - EMERGENCY ATTENDANCE • FULLY INSURED •
 - FREE ESTIMATES •

THINK FENCING... THINK OAKLAND



Mat Pilates

Mixed ability classes, everyone welcome!

WEDNESDAY

9.00- 10.00AM

TATSFIELD WI HALL

THURSDAY

7.30-8.30PM

TATSFIELD WI HALL

FRIDAY

10.00- 11.00AM

TATSFIELD WI HALL

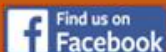
Contact me for more information: emilydancefirst.co.uk



Stuart Farmer
Property
Maintenance
&
Refurbishment

All types of property
maintenance
and refurbishment
works undertaken.
For an estimate
please call

**Stuart on
07802 888774**



Entre Nous Lingerie

4 London Road, Westerham, TN16 1BD

*NEW Triumph Amourette in-store,
matching pyjamas available*



Entre Nous is a small independent lingerie shop in Westerham, owned by Jane and Kate, who have over 20 years of experience.



10 – 4 Tuesday to Saturday
www.entrenouslingerie.co.uk
01959 563975

EXPERT ACCOUNTING & TAX ADVICE

Who we are

Devonshire Green is a team of qualified accountants with over 90 years combined experience. Serving clients nationwide from our idyllic Westerham office, our team includes tax accountants, financial advisers and wealth management experts ready to help with all your accounting needs!



Trusted by thousands



No jargon



Award winning service

What we do

- Personal tax returns – self assessment
- Limited company accounts
- Sole trader accounts
- Management accounts
- CIS for contractors & subcontractors
- Payroll
- Tax planning
- VAT returns
- Bookkeeping
- Wealth management

Let's talk

Tel: 01959 565772

Email: admin@devonshiregreen.uk

Lodges Wood Oast, Goodley Stock Road
Westerham, Kent TN16 1TW



DevonshireGreen
Accounting | Taxation | Financial Planning

www.devonshiregreen.uk



R. THORPE
— HEATING & PLUMBING LTD —

Domestic & Commercial Heating Engineers & Plumbers

- **Boiler Breakdowns, Repairs and Servicing** (All Makes and Models)
- **Boiler Installations and Replacements** (Interest Free Finance Available)
- **Heating Installations and Efficiency Upgrades**
Including Underfloor Heating, Servicing and Repairs
- **All Plumbing Work Undertaken**
- **Air-conditioning and Heat pumps**

Rob and his team cover anything from family homes up to large commercial properties. Based in Biggin Hill and covering London, Kent, Surrey and Sussex.



Call or WhatsApp: **07597 048884**
Email: rob@rthorpeheating.co.uk
Visit: rthorpeheating.co.uk



Elite Global Construction Ltd

Please do not hesitate to contact today about your dream bathroom kitchen or renovation project, your dream is our mission.

kitchen and bathroom specialists

One of our many great reviews:

"Highly recommend Elite Global Construction, we have had a bathroom renovated along with a downstairs toilet and Lobby area, just had a new kitchen fitted and it has been a great transformation..."



@eliteglobalconstructionltd

www.eliteglc.com 07837 646688

Eliteglobalconstructionltd@gmail.com



NEW LIFE CHURCH
BIGGIN HILL

A CHURCH FOR THE WHOLE COMMUNITY

A local church with an international vision

EVERY SUNDAY 10am

Join us for worship
and Bible teaching
with youth and kids
meetings

DURING THE WEEK

- **Connect** Every Monday from 2-4pm
- **Stay & Play** Term time Fridays 10:30am-12pm
- **Youth** Term time Fridays 7:30-9pm
- **Dance fit** Friday 5:30-6:30pm
- **Board games cafe** First Saturday of the month 3-7pm

SCAN ME



FIND OUT MORE

Try
Church



www.newlifebh.org.uk
01959 571 667



f www.facebook.com/newlifebh

ig newlifebigginhill

whatsapp @newlifechurchbigginhill352



DAVID RUDD & SON PLUMBING AND HEATING LTD

- Full central heating systems and boiler exchanges carried out for GAS, LPG and Oil (Kerosene)
- Installers of Worcester, Valliant and Glow Worm boilers with up to **12-year** guarantee
- Kamco Power Flushing
- All types of Plumbing, Heating and Drainage
- Landlord / Homeowners Gas Certificates
- Installation and maintenance of Ground Source Pumps, Solar,
- Under Floor Heating, Cookers and Gas Fires
- Boiler breakdown – Diagnostics and Repairs
- Installation and servicing of Unvented Hot Water Systems
- Full bathroom design and installations

Fast, Friendly, Reliable Service

WRAS Approved Institute of Plumbing
ACIPHE RP



Tel: **01959 577072**

Mob: **07831 641664**

07957 940905

davidruddandson@hotmail.com



EST. 1881

•W•UDEN & SONS•

FAMILY FUNERAL
DIRECTORS



Biggin Hill : 01959 537 130

Petts Wood : 01689 822 291

West Wickham : 020 8777 4444

Bromley : 020 8658 0000

Beckenham : 020 8462 2222



wuden.com



@UdenFunerals



ALEX JONES FUNERAL DIRECTORS

Serving the community since 1996

- OFFERING A CARING AND PERSONAL SERVICE
- BEAUTIFUL CHAPELS OF REST
- HOME VISITS AVAILABLE
- MEMORIAL MASONRY
- PRE-PAID FUNERAL PLANS FROM GOLDEN CHARTER
- AN INDEPENDENT FAMILY OWNED BUSINESS



LINGFIELD
1 East Grinstead Road
Surrey
RH7 6EP
Tel: 01342 832 534

OXTED
92 Station Road East
Surrey
RH8 0QA
Tel: 01883 730 383

FOREST ROW
1 Ashdown Court
Lewes Road, East Sussex
RH18 5EZ
Tel: 01342 822 399

EDENBRIDGE
70 High Street
Kent
TN8 5AS
Tel: 01732 860 047

GOLDEN CHARTER
FUNERAL PLANS



Alex Jones Funeral Directors Limited is an appointed representative of Golden Charter Limited trading as Golden Charter Funeral Plans which is authorised and regulated by the Financial Conduct Authority (FRN:965279).

GC-LIFT 2806 - 1023



Badger Bathrooms



SHOWROOM: Betsom's Farm, Westerham TN16 2DS
01732 464450 www.badgerbathrooms.com



Good Movers

Removals & Clearances

- Removals
- Boxes & Packing
- Storage
- Clearances
- Courier Delivery
- Cleaning
- Probate Service Arranged
- Light Demolition
- Cash Paid for Unwanted Goods

The best way, the only way, the Good way!

0800 024 6183 / 07522 795594
www.goodmovers.co.uk / info@goodmovers.co.uk

Keeping IT Simple

Solving all your technical support worries, calmly and patiently in your own home, by someone who cares

- > New Device Setup
- > Instruction & Tuition
- > Cleaning & Cooling
- > Virus & Malware Removal
- > Hardware Upgrades
- > Remote Support
- > Small Business Support
- > WiFi Routers & Networking
- > Cloud Storage
- > Data Backup
- > Data Recovery
- > E-mail Support
- > PCs & Laptops
- > Printers
- > Smartphones
- > Tablets
- > Televisions
- > Wireless Security Cameras




07375 416 176
dan@kisit.co.uk




MUSSELWHITE

BUILDING, PLUMBING & HEATING



Est. 1979 | Family Run | Professional | Reliable | Honest Workmanship

Call or WhatsApp:

07887 517361

musselwhite.builders@gmail.com

- Plumbing & Heating
- Extensions
- Landscaping & Fencing
- Bathroom & Kitchen Installations
- Roofing
- Refurbishments
- Disability Access
- Glazing
- Carpentry
- Pipework
- Underfloor heating
- Maintenance and Repairs
- Brickwork
- Rendering & Plastering
- Electrical Works

Cheekatrade
Approved member



CIPHE
Construction Industry Payments
Association



WORCESTER
Bosch Group





CREST

DEVELOPMENT GROUP LTD

Luxury Home Transformations You Can Trust

Plumbing • Bathrooms • Kitchens • Full Refurbishments

Crafted with precision. Designed for excellence.

At Crest Development Group Ltd, we specialise in high-quality home improvements that combine craftsmanship, style and reliability.

From luxury bathrooms and bespoke kitchens to full property refurbishments and professional plumbing services, our experienced team delivers results built to last.

FREE ESTIMATES AVAILABLE

☎ 0800 047 2611

crestdevelopmentgroup.co.uk

Start your next project with confidence.

Contact us today for a no-obligation quote.

Find us on Instagram & Facebook

📷 @ _crest_development_group_ltd_

Checkatrade.com
where reputation matters

THE WASP GUYS Wasp Nest Removal 07761 232470

Local
Friendly
Trustworthy
Service



Fully Insured
100%
Guaranteed
7 days a week

See our Checkatrade customer
reviews at

[https://www.checkatrade.com/
trades/thewaspguys](https://www.checkatrade.com/trades/thewaspguys)

www.waspnestsdestroyed.com

Discover the joy of dance



Twirl your tutu

All dance styles. All ages.

07850 746189/ 07584 064643
www.judithessexschoolofdancing.co.uk



IDTA

**ROYAL ACADEMY OF
DANCE**
REGISTERED TEACHER





Culverhouse & Co.

CHARTERED ACCOUNTANTS
CHARTERED FINANCIAL PLANNERS

LOOKING FOR... AN ACCOUNTANT? A FINANCIAL ADVISER?

We combine experience with a proactive approach; providing strategic advice on areas including business finances, tax planning, and wealth management to deliver long-term benefits.

- ✓ Personalised solutions
- ✓ Accounting & financial planning services
- ✓ Helping you live life the way you want to live it

01689 862211

info@culverhouse-accountants.co.uk

7 High St, Farnborough Village, BR6 7BQ

**Tatsfield
Aquatics**

Proud members of
Checkatrade.com
Where reputation matters

Pond Maintenance And Landscaping

- Pond Maintenance
- Pond Design & Construction
- Pond Renovation
- Lake Management
- Garden Makeovers
- Fencing, Paving, Turfing

01959 571 828

ian@tatsfieldaquaticsandlandscaping.co.uk



MINI CABS

AIRPORT CARS BIGGIN HILL

YOUR LOCAL

LICENSED MINI CABS

01959 540550

Ibbett Mosely

A name you can trust.

Independent Estate Agents - Selling Homes since 1900



PROFESSIONAL SERVICES

Residential Estate Agency • Residential Lettings
Property Management • Commercial Agency
Valuations • Building Design and Layout
Building Surveying • Town Planning and Development
Auctions - Furniture, Effects, Antiques and Fine Art

28 Market Square, Westerham, Kent, TN16 1FR
01959 563265

westerham@ibbettmosely.co.uk
www.ibbettmosely.co.uk

Offices at

Westerham • Sevenoaks • Otford • Tonbridge • Borough Green • West Malling • London

Sunningvale Service Station

Sunningvale Avenue, Biggin Hill TN16 3TL

01959 573434

We offer a warm welcome and friendly service
whatever your motoring needs



Petrol/Diesel

MOT

Catalysts

Bodywork Repairs

Diesels

Spraying

Exhausts

Insurance Estimates

**LING & Sons Ltd**
BUILDING CONTRACTORS

BUILDING FOR OVER 50 YEARS

New Builds | Renovations | Extensions

**CONTACT Information**

 01959 577586

 info@lingandsons.co.uk



NHBC




www.lingandsons.co.uk

MR Computing

38 years of combined experience in IT

Local, Professional and Family Owned
business since 2005

NO FIX NO FEE & NO CALL OUT CHARGE

- 
- Punctual visits at an agreed time or collection & drop off service.
 - Apple & Windows computer & tablet/phone support for Business & Home.
 - Reliable wireless range improvement for Home & Business.
 - Most work carried out in a one hour visit. Fixed price workshop repairs.
 - Repairs, speedup and maintenance, Data transfer/recovery, Computer malware/virus removal.
 - New computers supplied/set up and made to feel familiar.



&



Windows

**Call Mark
& Sue on:**

01883 730345

OR

0800 6129534

Email:

office@mrcomputing.net



Website - www.mrcomputing.net
Reviews - mrcomputing.net/reviews